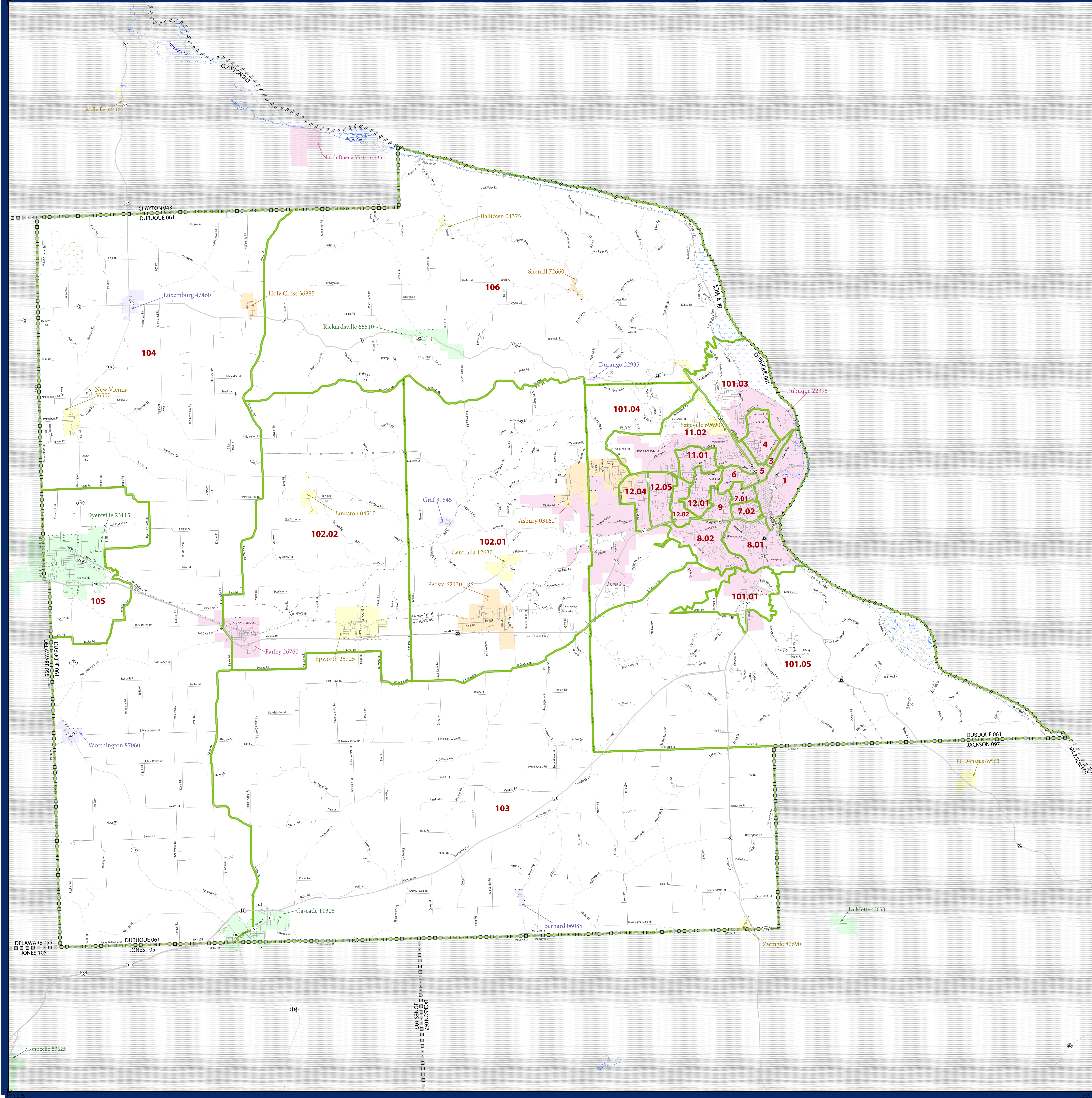


2010 CENSUS - CENSUS TRACT REFERENCE MAP: Dubuque County, IA



LEGEND	
SYMBOL DESCRIPTION	LABEL STYLE
Federal American Indian Reservation	L'ANSE RES 1880
Off Reservation Trust Land, Hawaiian Home Land	T1880
Oklahoma Tribal Statistical Area, Alaska Native Village Statistical Area, Tribal Designated Statistical Area	KAW OTSA 5340
State American Indian Reservation	Tama Res 4125
State Designated Tribal Statistical Area	Lumbee STSA 9815
Alaska Native Regional Corporation	NANA ANRC 52120
State (or statistically equivalent entity)	NEW YORK 36
County (or statistically equivalent entity)	ERIE 029
Minor Civil Division (MCD) ^{1,2}	Bristol town 07485
Consolidated City	MILFORD 47500
Incorporated Place ^{1,3}	Davis 18100
Census Designated Place (CDP) ³	Incline Village 35100
Census Tract	33.07

DESCRIPTION	SYMBOL	DESCRIPTION	SYMBOL
Interstate	[Thick blue line]	Water Body	[Blue wavy line]
U.S. Highway	[Thin blue line]	Swamp or Marsh	[Blue wavy line with dots]
State Highway	[Thin blue line]	Glacier	[Blue wavy line with dots]
Other Road	[Thin grey line]	Military	[Blue wavy line with dots]
4WD Trail, Stairway, Alley, Walkway, or Ferry	[Thin grey line]	National or State Park, Forest, or Recreation Area	[Green wavy line]
Railroad	[Black line with cross-ticks]	Inset Area	[Grey box]
Pipeline or Power Line	[Thin black line]	Outside Subject Area	[Grey box]
Ridge or Fence	[Thin black line]		
Property Line	[Thin black line]		
Nonvisible Boundary or Feature Not Elsewhere Classified	[Thin black line]		

Where state, county, and/or MCD boundaries coincide, the map shows the boundary symbol for only the highest-ranking of these boundaries.

1 A "*" following an MCD name denotes a false MCD. A "*" following a place name indicates that a false MCD exists with the same name and FIPS code as the place; the false MCD label is not shown.

2 MCD boundaries are shown in the following states in which MCDs have functioning governments: Connecticut, Maine, Massachusetts, Michigan, Minnesota, New Hampshire, New Jersey, New York, Pennsylvania, Rhode Island, Vermont, and Wisconsin.

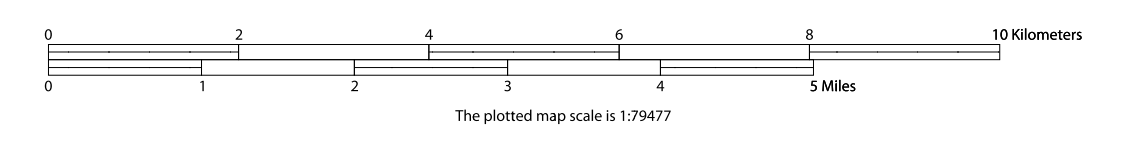
3 Place label color correlates to the place fill color.

All legal boundaries and names are as of January 1, 2010. The boundaries shown on this map are for Census Bureau statistical data collection and tabulation purposes only; their depiction and designation for statistical purposes does not constitute a determination of jurisdictional authority or rights of ownership or entitlement.

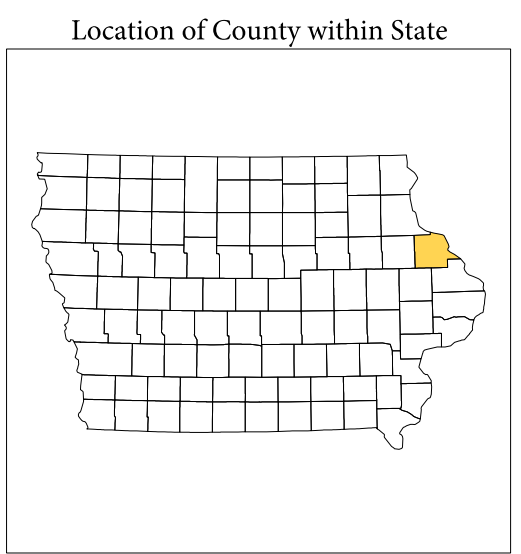
Geographic Vintage: 2010 Census (reference date: January 1, 2010)
 Data Source: U.S. Census Bureau's MAINTIGR database (TAB100219)
 Map Created by Geography Division: November 30, 2010

U.S. DEPARTMENT OF COMMERCE Economics and Statistics Administration U.S. Census Bureau

Projection: Albers Equal Area Conic
 Datum: NAD83
 Spheroid: GRS 80
 1st Standard Parallel: 40 53 46
 2nd Standard Parallel: 42 58 46
 Central Meridian: 93 23 22
 Latitude of Projection's Origin: 40 22 31
 False Easting: 0
 False Northing: 0



PARENT SHEET 1
 Total Sheets: 1
 Index Sheets: 0
 Parent Sheets: 1
 Inset Sheets: 0



NAME: Dubuque County (061)
 ENTITY TYPE: County or statistically equivalent entity
 ST: Iowa (19)