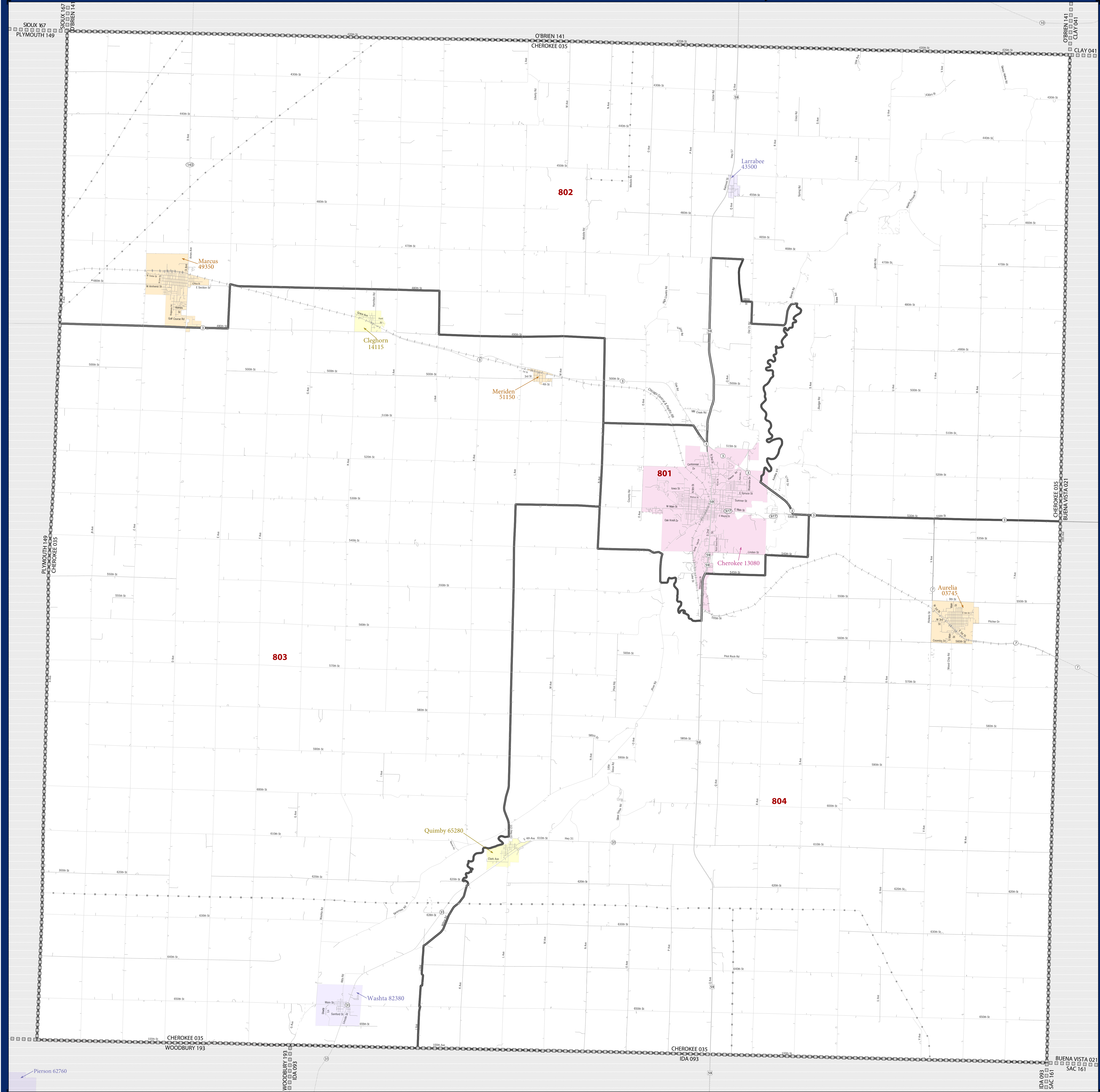


# 2010 CENSUS - CENSUS TRACT REFERENCE MAP: Cherokee County, IA



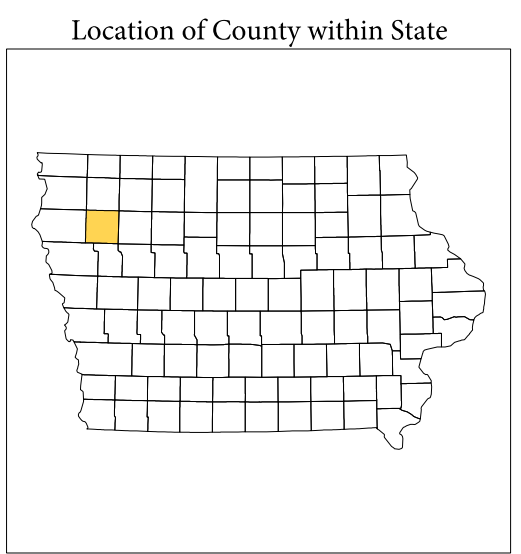
SYMBOL DESCRIPTION	SYMBOL	SYMBOL DESCRIPTION	SYMBOL
Federal American Indian Reservation	[Symbol]	Water Body	[Symbol]
Off Reservation Trust Land, Hawaiian Home Land	[Symbol]	Swamp or Marsh	[Symbol]
Oklahoma Tribal Statistical Area, Alaska Native Village Statistical Area, Tribal Designated Statistical Area	[Symbol]	Glacier	[Symbol]
State American Indian Reservation	[Symbol]	Military	[Symbol]
State Designated Tribal Statistical Area	[Symbol]	National or State Park, Forest, or Recreation Area	[Symbol]
Alaska Native Regional Corporation	[Symbol]	Inset Area	[Symbol]
State (or statistically equivalent entity)	[Symbol]	Outside Subject Area	[Symbol]
County (or statistically equivalent entity)	[Symbol]		
Minor Civil Division (MCD) <sup>1,2</sup>	[Symbol]		
Consolidated City	[Symbol]		
Incorporated Place <sup>1,3</sup>	[Symbol]		
Census Designated Place (CDP) <sup>3</sup>	[Symbol]		
Census Tract	[Symbol]		

Where state, county, and/or MCD boundaries coincide, the map shows the boundary symbol for only the highest-ranking of these boundaries.

1 A " " following an MCD name denotes a false MCD. A " " following a place name indicates that a false MCD exists with the same name and FIPS code as the place; the false MCD label is not shown.

2 MCD boundaries are shown in the following states in which MCDs have functioning governments: Connecticut, Maine, Massachusetts, Michigan, Minnesota, New Hampshire, New Jersey, New York, Pennsylvania, Rhode Island, Vermont, and Wisconsin.

3 Place label color correlates to the place fill color.

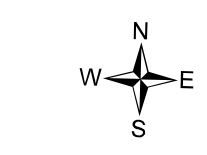
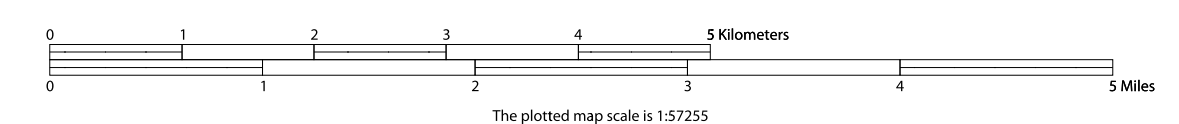


All legal boundaries and names are as of January 1, 2010. The boundaries shown on this map are for Census Bureau statistical data collection and tabulation purposes only; their depiction and designation for statistical purposes does not constitute a determination of jurisdictional authority or rights of ownership or entitlement.

Geographic Vintage: 2010 Census (reference date: January 1, 2010)  
 Data Source: U.S. Census Bureau's MAINTIGER database (TAB100213)  
 Map Created by Geography Division: November 30, 2010

U.S. DEPARTMENT OF COMMERCE Economics and Statistics Administration U.S. Census Bureau

Projection: Albers Equal Area Conic  
 Datum: NAD83  
 Spheroid: GRS 80  
 1st Standard Parallel: 40 53 46  
 2nd Standard Parallel: 42 58 46  
 Central Meridian: 93 23 22  
 Latitude of Projection's Origin: 40 22 31  
 False Easting: 0  
 False Northing: 0



PARENT SHEET 1  
 Total Sheets: 1  
 Index Sheets: 0  
 Parent Sheets: 1  
 Inset Sheets: 0

NAME: Cherokee County (035)  
 ENTITY TYPE: County or statistically equivalent entity  
 ST: Iowa (19)