

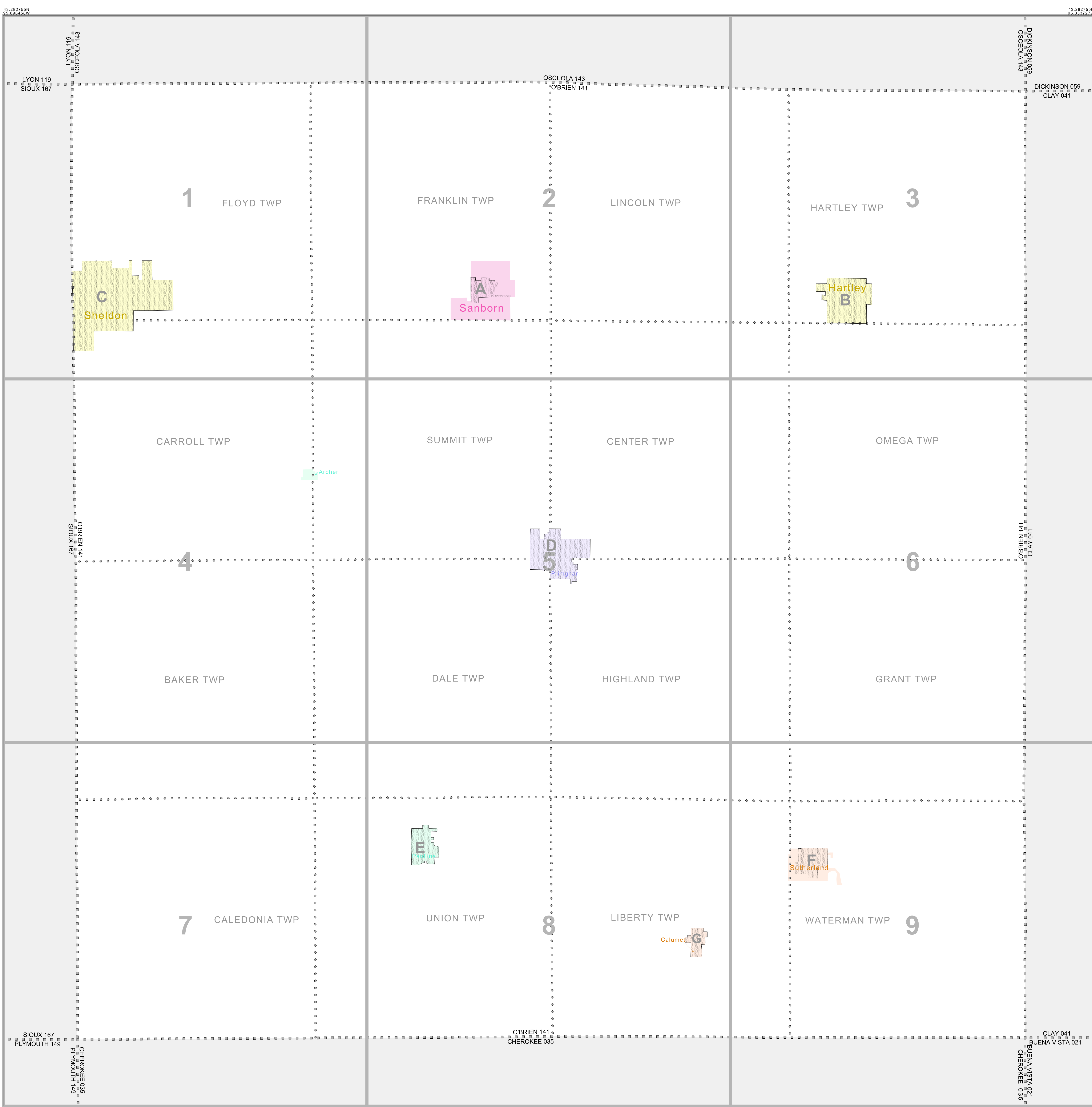
INDEX FOR P.L. 94-171 COUNTY BLOCK MAP (CENSUS 2000)

### INDEX MAP LEGEND

SYMBOL	NAME STYLE
*****	INTERNATIONAL
-----	AIR (FEDERAL)
-----	Trust Land/HLL
-----	OTSA/ANVSA/TDSA
-----	TRIBAL SUBDIVISION
-----	AIR (State)
-----	SDA/SA
-----	ANRC
	STATE
	COUNTY
	MINOR CIVIL DIV. <sup>1</sup>
o-o-o-o-o	Consolidated City
o-o-o-o-o	Incorporated Place <sup>1</sup>
o-o-o-o-o	Census Designated Place <sup>1</sup>
[Inset]	Inset
[Out Area]	Out Area

Abbreviation Reference: AIR - American Indian Reservation; Trust Land - Off-Reservation Trust Land; ANRC - Alaska Native Regional Corporation; TDSA - Tribal Designated Statistical Area; FSDSA - Federal Subdivision - American Indian Tribal Subdivision; SDA/SA - State Designated American Indian Statistical Area; ANRC - Alaska Native Regional Corporation

<sup>1</sup> A "\*" following a place name indicates that the place is coextensive with a MCD. A "C" indicates that the place is also a false MCD. In both cases, the MCD name is shown only when it differs from the place name.



### P.L. 94-171 COUNTY BLOCK MAP LEGEND (CENSUS 2000)

SYMBOL DESCRIPTION	SYMBOL	NAME STYLE
International	*****	CANADA
American Indian Reservation (Federal)	*****	L'ANSE RES (1880)
Off-Reservation Trust Land, Hawaiian Home Land	*****	T1880
Oklahoma Tribal Statistical Area, Alaska Native Village Statistical Area, Tribal Designated Statistical Area	o-o-o-o-o	KAW OTSA (5340)
American Indian Tribal Subdivision	o-o-o-o-o	SHONTO (620)
American Indian Reservation (State)	o-o-o-o-o	Tama Res (4125)
State Designated American Indian Statistical Area	o-o-o-o-o	Lumbee (9815)
Alaska Native Regional Corporation	o-o-o-o-o	NANA ANRC 52120
State or Statistically Equivalent Entity	o-o-o-o-o	NEW YORK 36
County or Statistically Equivalent Entity	o-o-o-o-o	ERIE 029
Minor Civil Division (MCD) <sup>1</sup>	o-o-o-o-o	PIKE TWP 59742
Census County Division (CCD)	o-o-o-o-o	KULA CCD 91890
Consolidated City	o-o-o-o-o	Milford 47500
Incorporated Place <sup>1</sup>	o-o-o-o-o	Rome 63418
Census Designated Place (CDP) <sup>1</sup>	o-o-o-o-o	Zena 84187
Corporate Offset Boundary	o-o-o-o-o	
Voting District (VTD) <sup>2</sup>	o-o-o-o-o	023*
Census Tract	o-o-o-o-o	5702.01
Block <sup>3</sup>	o-o-o-o-o	1320

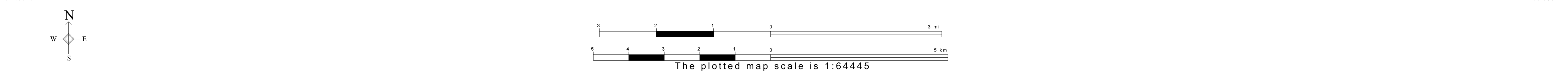
FEATURE	SYMBOL	FEATURE	SYMBOL
Interstate or Other Highway	—	Perennial Stream or Shoreline	Tumling Cr.
Secondary Road	—	Intermittent Stream or Shoreline	Flow Cr.
Leop Trail, Walkway, Stairway, or Ferry	—	Large River or Lake	Hiwassee Lake
Railroad	—	Glacier	Bering Glacier
Pipelining or Power Line	—	Military Installation	Fort Belvoir
Ridge, Fence, or Other Physical Feature	—	Inset Area	A
Property Line or Fence Line	—	Outside Subject Area	
Nonvisible Boundary or Feature Not Elsewhere Classified	—		

Where international, state, and/or county boundaries coincide, the map shows the boundary symbol for only the highest-ranking of these boundaries.

<sup>1</sup> A "\*" following a place name indicates that the place is coextensive with a MCD. A "C" following an incorporated place name indicates that the place is also a false MCD. In both cases, the MCD name is shown only when it differs from the place name.

<sup>2</sup> A "\*" following a VTD code indicates an actual voting district. Its absence indicates that the VTD is a pseudo voting district or no information is available as to its status.

<sup>3</sup> A "\*" following a block number indicates that the block number is repeated elsewhere in the block.



All legal boundaries and names are as of January 1, 2000. The boundaries shown on this map are for Census Bureau statistical data collection and tabulation purposes only; their depiction and designation for statistical purposes does not constitute a determination of jurisdictional authority or rights of ownership or entitlement. U.S. DEPARTMENT OF COMMERCE Economics and Statistics Administration U.S. Census Bureau

ST: Iowa (19)  
 COU: O'Brien (141)  
 INDEX MAP (TOTAL PARENT SHEETS 9 TOTAL INSET SHEETS 7)



# P.L. 94-171 COUNTY BLOCK MAP LEGEND (CENSUS 2000)

<u>SYMBOL DESCRIPTION</u>	<u>SYMBOL</u>	<u>NAME STYLE</u>
International	☆☆☆☆☆☆	<b>CANADA</b>
American Indian Reservation (Federal)	☆☆☆☆☆☆	<b>L'ANSE RES (1880)</b>
Off-Reservation Trust Land, Hawaiian Home Land	☆☆☆☆☆☆	<b>T1880</b>
Oklahoma Tribal Statistical Area, Alaska Native Village Statistical Area, Tribal Designated Statistical Area	◆◆◆◆◆◆◆	<b>KAW OTSA (5340)</b>
American Indian Tribal Subdivision	◆◆◆◆◆◆◆	<b>SHONTO (620)</b>
American Indian Reservation (State)	// // // // // //	<b>Tama Res (4125)</b>
State Designated American Indian Statistical Area	◇◇◇◇◇◇◇	<b>Lumbee (9815)</b>
Alaska Native Regional Corporation	▽ ▲ ▽ ▲ ▽ ▲ ▽	<b>NANA ANRC 52120</b>
State or Statistically Equivalent Entity	// // // // // //	<b>NEW YORK 36</b>
County or Statistically Equivalent Entity	■ ■ ■ ■ ■ ■ ■	<b>ERIE 029</b>
Minor Civil Division (MCD) <sup>1</sup>	⬢ ⬢ ⬢ ⬢ ⬢ ⬢ ⬢	<b>PIKE TWP 59742</b>
Census County Division (CCD)	⬢ ⬢ ⬢ ⬢ ⬢ ⬢ ⬢	<b>KULA CCD 91890</b>
Consolidated City	○ ○ ○ ○ ○ ○ ○	<b>Milford 47500</b>
Incorporated Place <sup>1</sup>		<b>Rome 63418</b>
Census Designated Place (CDP) <sup>1</sup>		<b>Zena 84187</b>
Corporate Offset Boundary	.....	
Voting District (VTD) <sup>2</sup>	● ● ● ● ● ● ●	<b>023*</b>
Census Tract		<b>5702.01</b>
Block <sup>3</sup>		<b>1326</b>

<u>FEATURE</u>	<u>SYMBOL</u>	<u>FEATURE</u>	<u>SYMBOL</u>
Interstate or Other Highway		Perennial Stream or Shoreline	
Secondary Road		Intermittent Stream or Shoreline	
Jeep Trail, Walkway, Stairway, or Ferry		Large River or Lake	
Railroad		Glacier	
Pipeline or Power Line		Military Installation	
Ridge, Fence, or Other Physical Feature		Inset Area	
Property Line or Fence Line		Outside Subject Area	
Nonvisible Boundary or Feature Not Elsewhere Classified			

Where international, state, and/or county boundaries coincide, the map shows the boundary symbol for only the highest-ranking of these boundaries.

<sup>1</sup> A ' \* ' following a place name indicates that the place is coextensive with a MCD. A ' ° ' following an incorporated place name indicates that the place is also a false MCD. In both cases, the MCD name is shown only when it differs from the place name.

<sup>2</sup> A ' \* ' following a VTD code indicates an actual voting district. Its absence indicates that the VTD is a pseudo voting district or no information is available as to its status.

<sup>3</sup> A ' \* ' following a block number indicates that the block number is repeated elsewhere in the block.

P. L. 94-171 COUNTY BLOCK MAP (CENSUS 2000)

43 282756N  
95.896458W

43 282756N  
95.719847W

**GEOGRAPHIC AREAS LEGEND**

SYMBOL	NAME STYLE
*****	<b>INTERNATIONAL</b>
*****	<b>AIR (FEDERAL)</b>
*****	<b>Trust Land</b>
//////	<b>STATE</b>
	<b>COUNTY</b>
o-o-o-o-o	<b>MINOR CIVIL DIV.</b>
■ ■ ■ ■ ■	<b>Incorporated Place<sup>1</sup></b>
■ ■ ■ ■ ■	<b>Census Designated Place<sup>1</sup></b>
.....	<b>Corporate Offset Boundary</b>
.....	<b>Voting District<sup>2</sup></b>
.....	<b>Census Tract</b>
.....	<b>BLOCK<sup>3</sup></b>

Military     Inset     Out Area

Abbreviation Reference: AIR = American Indian Reservation; Trust Land = Off-Reservation Trust Land

1 A "\*" following a place name indicates that the place is coterminous with a MCD. A "-" indicates that the place differs from the MCD. In both cases, the MCD name is shown only when it differs from the place name.  
 2 A "\*" following a VTD code indicates an actual voting district. Its absence indicates that the VTD is a pseudo voting district or no information is available as to its status.  
 3 A "\*" following a block number indicates that the block number is repeated elsewhere in the block.

LYON 119  
SIOUX 167

LYON 119  
OSCEOLA 143

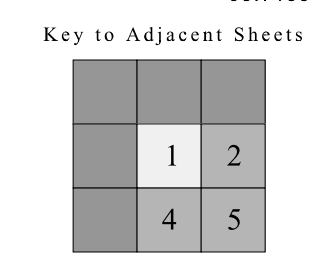
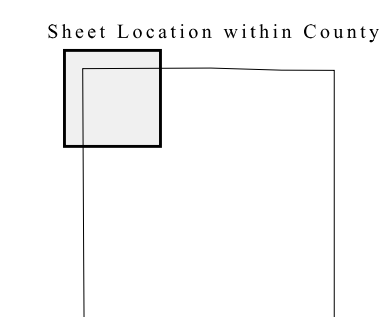
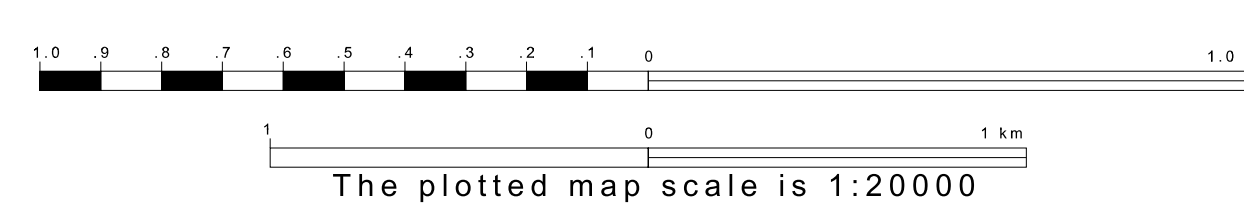
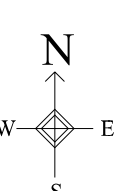
OSCEOLA 143  
OBRIEN 141

OBRIEN 141  
SIOUX 167

OBRIEN 141  
SIOUX 167

43 150147N  
95.896458W

43 150147N  
95.719847W



ST: Iowa (19)  
COU: O'Brien (141)  
SHEET 1 OF 9 PARENT SHEETS



All legal boundaries and names are as of January 1, 2000. The boundaries shown on this map are for Census Bureau statistical data collection and tabulation purposes only; their depiction and designation for statistical purposes does not constitute a determination of jurisdictional authority or rights of ownership or entitlement. U.S. DEPARTMENT OF COMMERCE Economics and Statistics Administration U.S. Census Bureau

P. L. 94-171 COUNTY BLOCK MAP (CENSUS 2000)

43.282756N  
95.715847W

43.282756N  
95.534636W

GEOGRAPHIC AREAS LEGEND

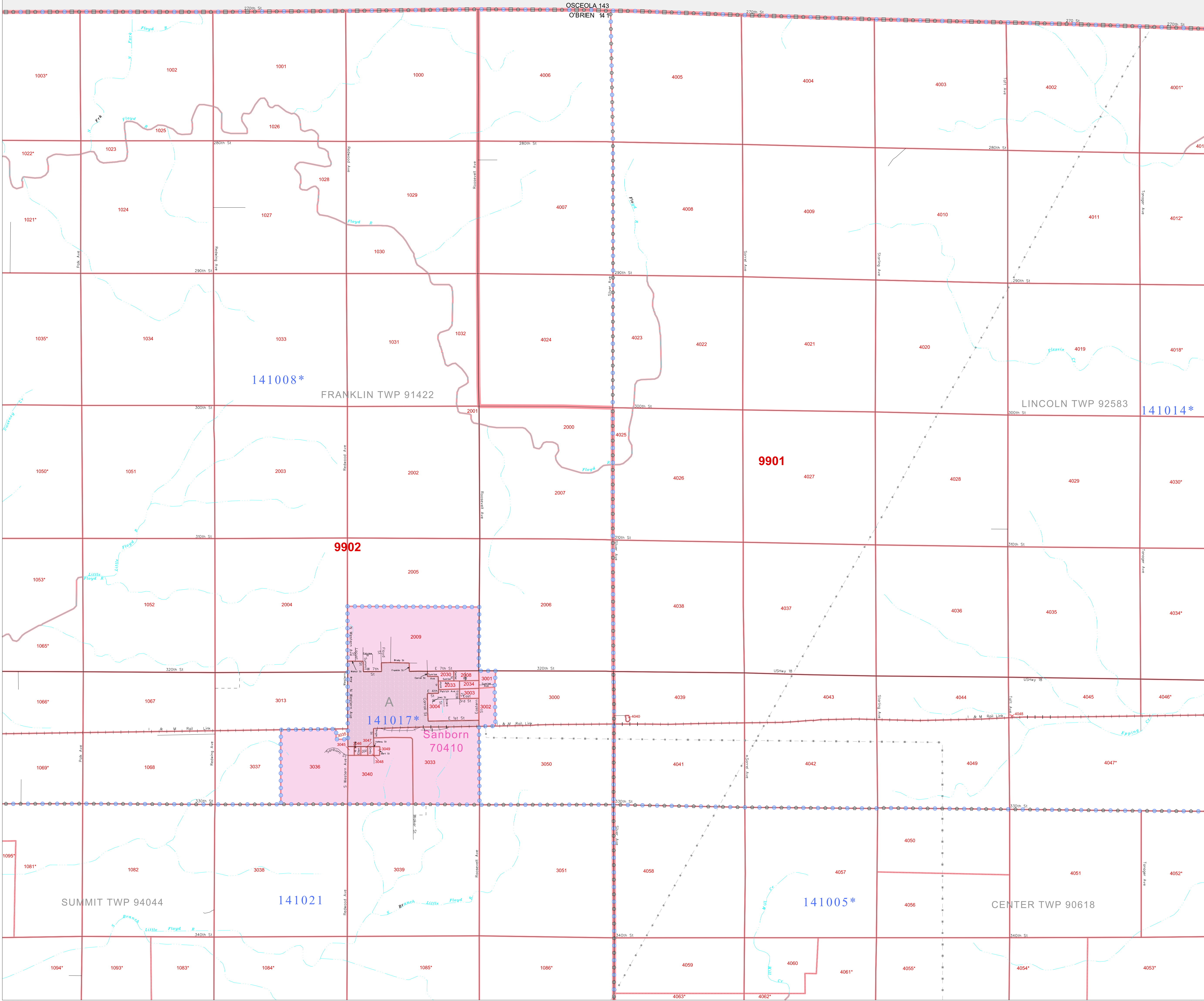
SYMBOL	NAME STYLE
*****	INTERNATIONAL
*****	AIR (FEDERAL)
*****	Trust Land
//////	STATE
	COUNTY
o-o-o-o-o	MINOR CIVIL DIV <sup>1</sup>
■ ■ ■ ■ ■	Incorporated Place <sup>1</sup>
■ ■ ■ ■ ■	Census Designated Place <sup>1</sup>
.....	Corporate Offset Boundary
.....	Voting District <sup>2</sup>
.....	Census Tract
.....	BLOCK <sup>3</sup>

Abbreviation Reference: AIR = American Indian Reservation; Trust Land = Off-Reservation Trust Land

1 A "\*" following a place name indicates that the place is coextensive with a MCD. "A" indicates that the place differs from the place name.

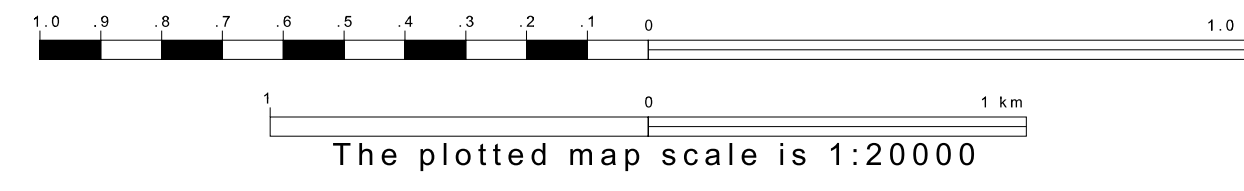
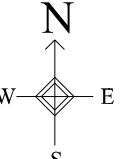
2 A "\*" following a VTD code indicates an actual voting district. Its absence indicates that the VTD is a pseudo voting district or no information is available as to its status.

3 A "\*" following a block number indicates that the block number is repeated elsewhere in the block.

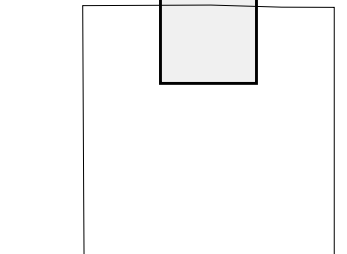


43.150147N  
95.715847W

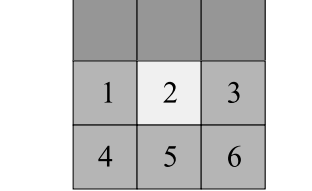
43.150147N  
95.534636W



Sheet Location within County



Key to Adjacent Sheets



ST: Iowa (19)  
COU: O'Brien (141)  
SHEET 2 OF 9 PARENT SHEETS



P.L. 94-171 COUNTY BLOCK MAP (CENSUS 2000)

43 282756N  
95.534636W

43 282756N  
95.533726W

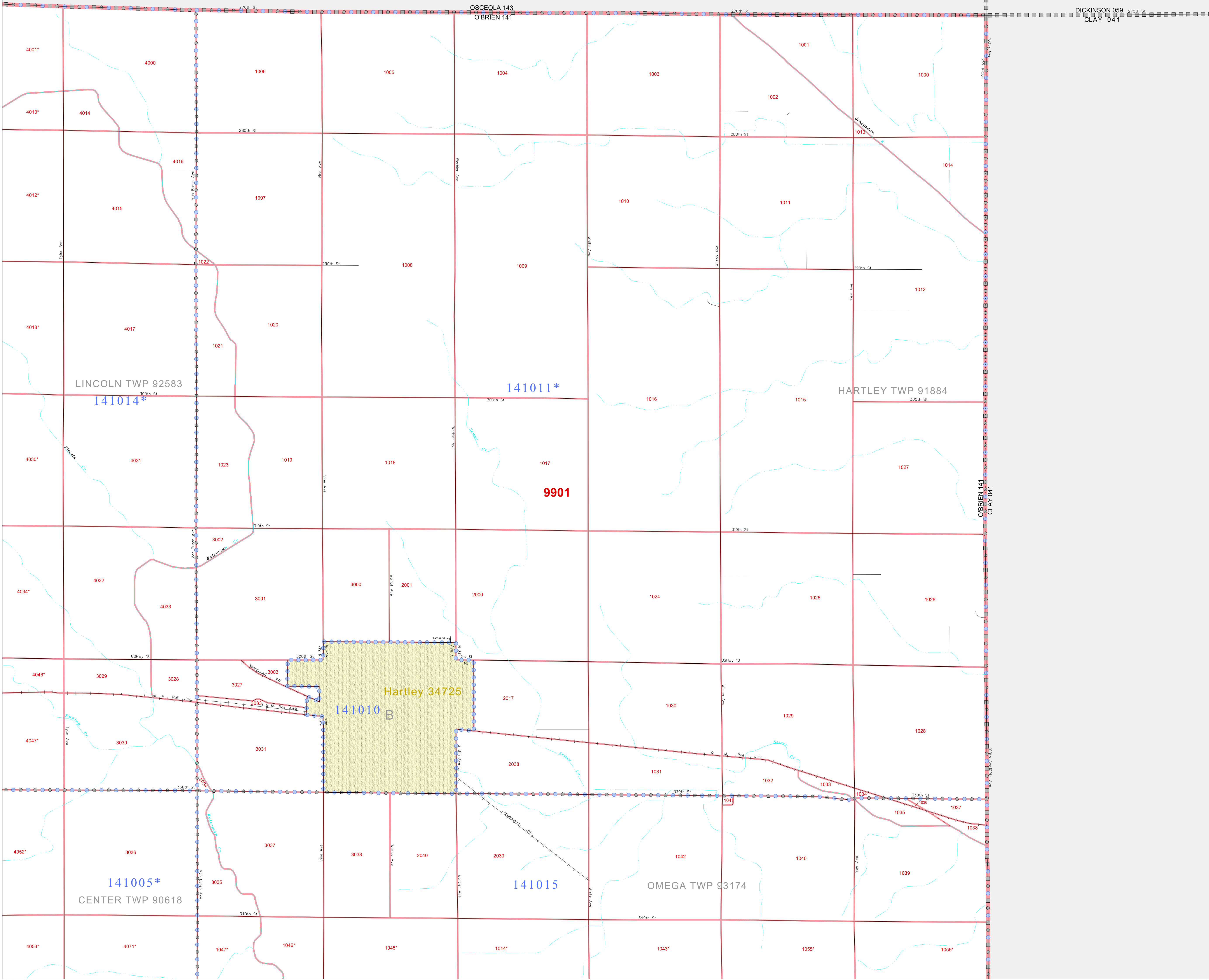
**GEOGRAPHIC AREAS LEGEND**

SYMBOL	NAME STYLE
*****	INTERNATIONAL
*****	AIR (FEDERAL)
*****	Trust Land
//////	STATE
	COUNTY
o-o-o-o	MINOR CIVIL DIV <sup>1</sup>
o-o-o-o	Incorporated Place <sup>1</sup>
o-o-o-o	Census Designated Place <sup>1</sup>
o-o-o-o	Corporate Offset Boundary
o-o-o-o	Voting District <sup>2</sup>
o-o-o-o	Census Tract
o-o-o-o	BLOCK <sup>3</sup>

Military  Inset  Out Area

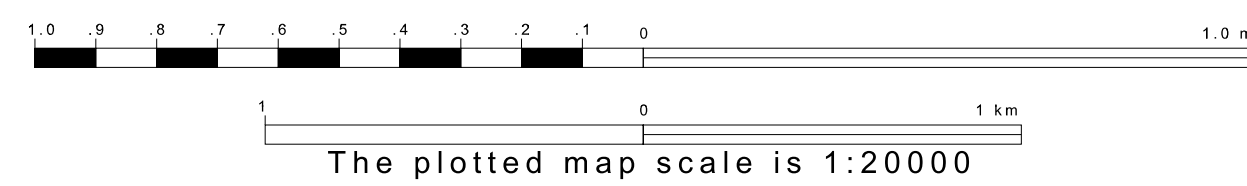
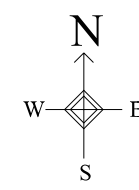
Abbreviation Reference: AIR = American Indian Reservation; Trust Land = Off-Reservation Trust Land

1 A "\*" following a place name indicates that the place is coterminous with a MCD. A "-" indicates that the place differs from the MCD. In both cases, the MCD name is shown only when it differs from the place name.  
 2 A "\*" following a VTD code indicates an actual voting district. Its absence indicates that the VTD is a pseudo voting district or no information is available as to its status.  
 3 A "\*" following a block number indicates that the block number is repeated elsewhere in the block.

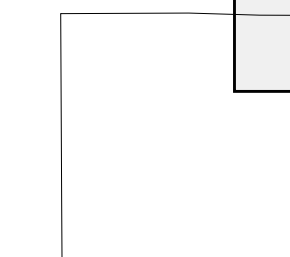


43 190147N  
95.534636W

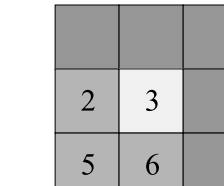
43 190147N  
95.533726W



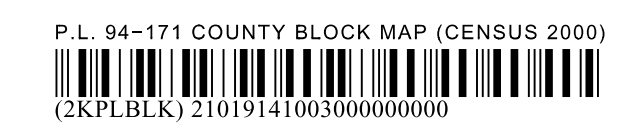
Sheet Location within County



Key to Adjacent Sheets



ST: Iowa (19)  
COU: O'Brien (141)  
SHEET 3 OF 9 PARENT SHEETS



P. L. 94-171 COUNTY BLOCK MAP (CENSUS 2000)

43.150147N

95.896458W

43.150147N

95.715547W



GEOGRAPHIC AREAS LEGEND

- | SYMBOL | NAME STYLE                |
|--------|---------------------------|
| *****  | INTERNATIONAL             |
| *****  | AIR (FEDERAL)             |
| *****  | Trust Land                |
| *****  | STATE                     |
| *****  | COUNTY                    |
| *****  | MINOR CIVIL DIV.          |
| *****  | Incorporated Place*       |
| *****  | Census Designated Place*  |
| *****  | Corporate Offset Boundary |
| *****  | Voting District*          |
| *****  | Census Tract              |
| *****  | BLOCK*                    |

Abbreviation Reference: AIR = American Indian Reservation; Trust Land = Gift/Reservation Trust Land

- \* A \* \* following a place name indicates that the place is coterminous with a MCD. A \* \* indicates that the place differs from the place name.
- \* A \* \* following a VTD code indicates an actual voting district. Its absence indicates that the VTD is a pseudo voting district or no information is available as to its status.
- \* A \* \* following a block number indicates that the block number is repeated elsewhere in the block.

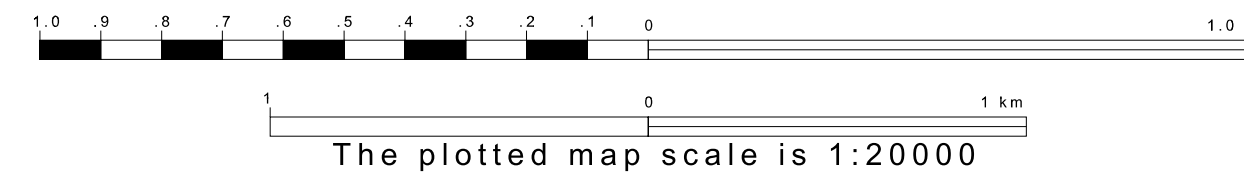
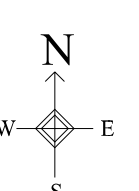
Inset Out Area

43.017537N

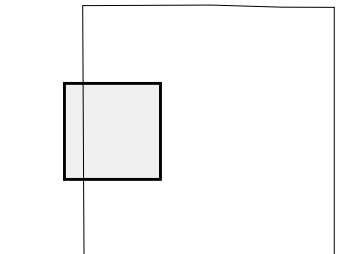
95.896458W

43.017537N

95.715547W



Sheet Location within County



Key to Adjacent Sheets

1	2
4	5
7	8

ST: Iowa (19)  
 COU: O'Brien (141)  
 SHEET 4 OF 9 PARENT SHEETS



All legal boundaries and names are as of January 1, 2000. The boundaries shown on this map are for Census Bureau statistical data collection and tabulation purposes only; their depiction and designation for statistical purposes does not constitute a determination of jurisdictional authority or rights of ownership or entitlement. U.S. DEPARTMENT OF COMMERCE Economics and Statistics Administration U.S. Census Bureau

P.L. 94-171 COUNTY BLOCK MAP (CENSUS 2000)

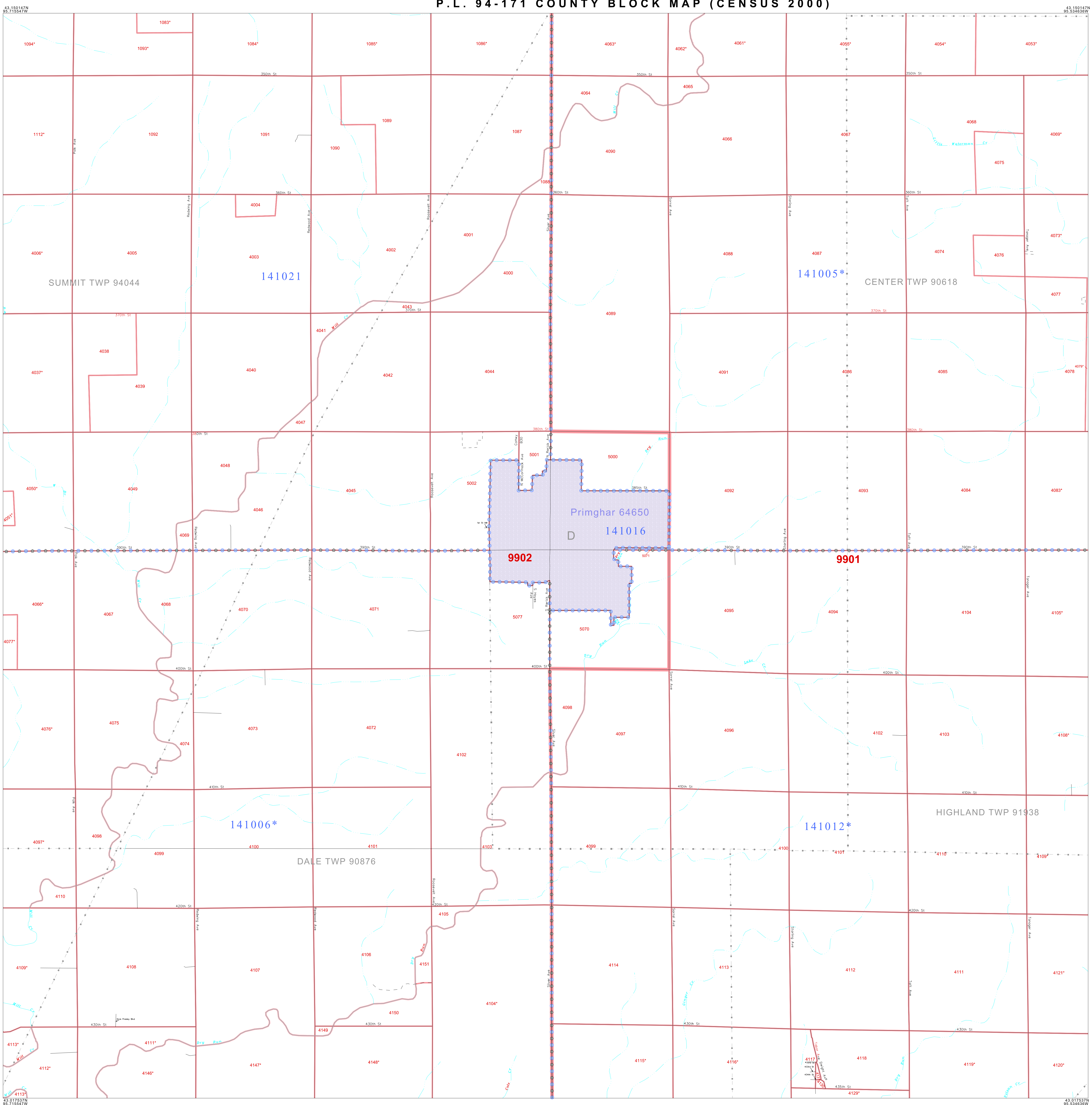
**GEOGRAPHIC AREAS LEGEND**

SYMBOL	NAME STYLE
*****	INTERNATIONAL
*****	AIR (FEDERAL)
*****	Trust Land
*****	Trust Land
*****	STATE
*****	COUNTY
*****	MINOR CIVIL DIV.
*****	Incorporated Place <sup>1</sup>
*****	Census Designated Place <sup>1</sup>
*****	Corporate Offset Boundary
*****	Voting District <sup>2</sup>
*****	Census Tract
*****	BLOCK <sup>3</sup>

Military     Inset     Out Area

Abbreviation Reference: AIR = American Indian Reservation; Trust Land = Off-Reservation Trust Land

1 A "\*" following a place name indicates that the place is coextensive with a MCD. A "-" indicates that the place differs from the place name.  
 2 A "\*" following a VTD code indicates an actual voting district. Its absence indicates that the VTD is a pseudo voting district or no information is available as to its status.  
 3 A "\*" following a block number indicates that the block number is repeated elsewhere in the block.



43 150147N 95 715547W (top left)      43 150147N 95 534638W (top right)

43 017537N 95 715547W (bottom left)      43 017537N 95 534638W (bottom right)

SUMMIT TWP 94044      CENTER TWP 90618      DALE TWP 90876      HIGHLAND TWP 91938

141021      141005\*      141016      141006\*      141012\*

9902      9901

Primghar 64650 D

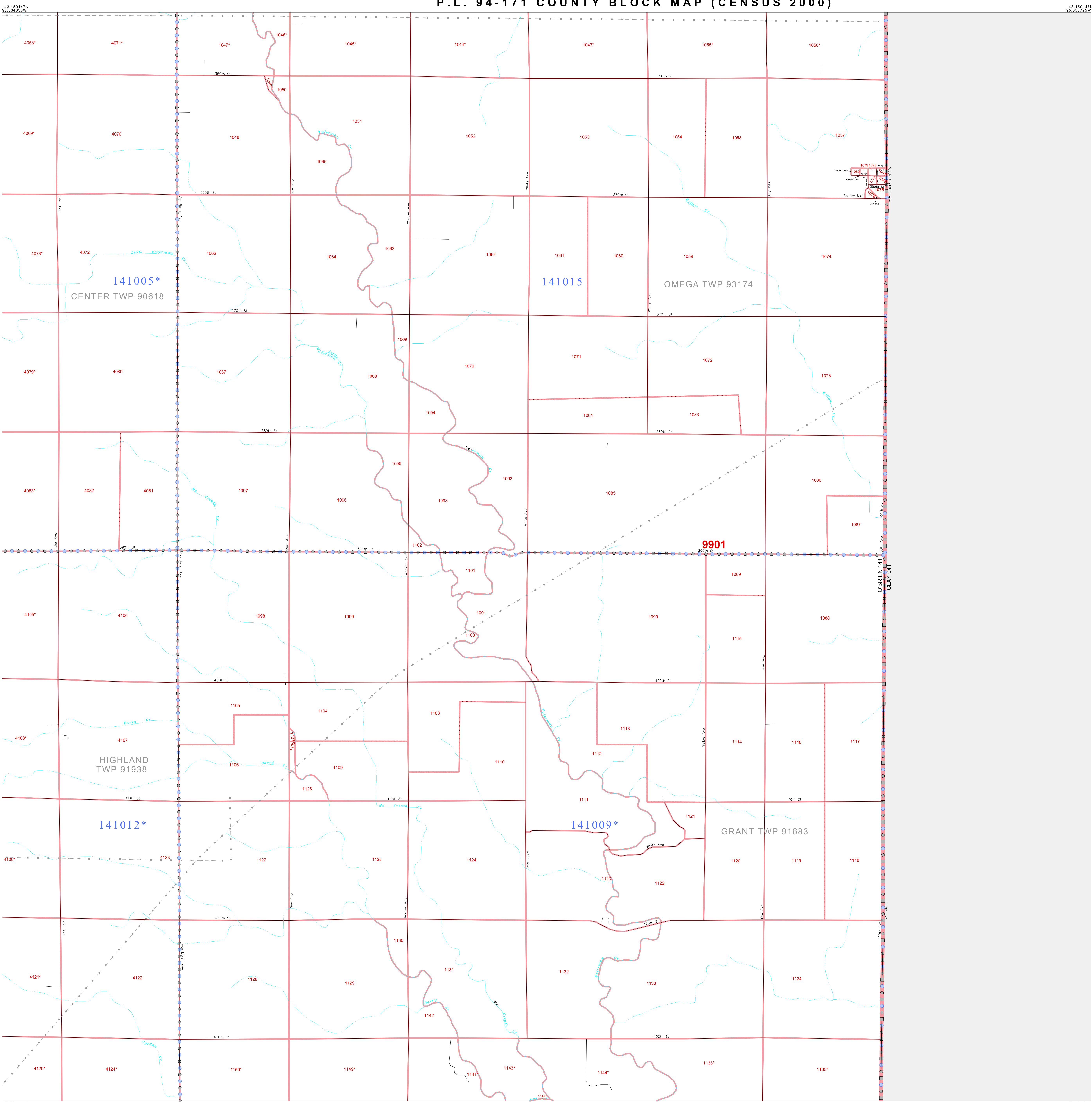
The plotted map scale is 1:20000

Sheet Location within County      Key to Adjacent Sheets

1 2 3  
 4 5 6  
 7 8 9

All legal boundaries and names are as of January 1, 2000. The boundaries shown on this map are for Census Bureau statistical data collection and tabulation purposes only; their depiction and designation for statistical purposes does not constitute a determination of jurisdictional authority or rights of ownership or entitlement. U.S. DEPARTMENT OF COMMERCE Economics and Statistics Administration U.S. Census Bureau

P.L. 94-171 COUNTY BLOCK MAP (CENSUS 2000)

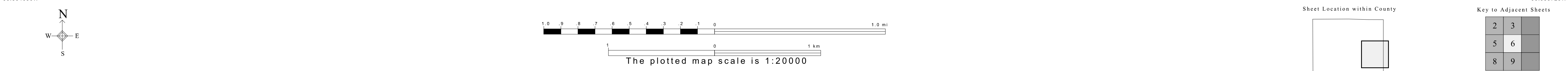


**GEOGRAPHIC AREAS LEGEND**

SYMBOL	NAME STYLE
*****	INTERNATIONAL
*****	AIR (FEDERAL)
*****	Trust Land
*****	STATE
*****	COUNTY
*****	MINOR CIVIL DIV.
*****	Incorporated Place <sup>1</sup>
*****	Census Designated Place <sup>1</sup>
*****	Corporate Offset Boundary
*****	Voting District <sup>2</sup>
*****	Census Tract
*****	BLOCK <sup>3</sup>

Abbreviation Reference: AIR = American Indian Reservation; Trust Land = Off-Reservation Trust Land

1 A "\*" following a place name indicates that the place is coterminous with a MCD. A "-" indicates that the place differs from the place name.  
 2 A "\*" following a VTD code indicates an actual voting district. Its absence indicates that the VTD is a pseudo voting district or no information is available as to its status.  
 3 A "\*" following a block number indicates that the block number is repeated elsewhere in the block.



All legal boundaries and names are as of January 1, 2000. The boundaries shown on this map are for Census Bureau statistical data collection and tabulation purposes only; their depiction and designation for statistical purposes does not constitute a determination of jurisdictional authority or rights of ownership or entitlement. U.S. DEPARTMENT OF COMMERCE Economics and Statistics Administration U.S. Census Bureau

ST: Iowa (19)  
 COU: O'Brien (141)  
 SHEET 6 OF 9 PARENT SHEETS

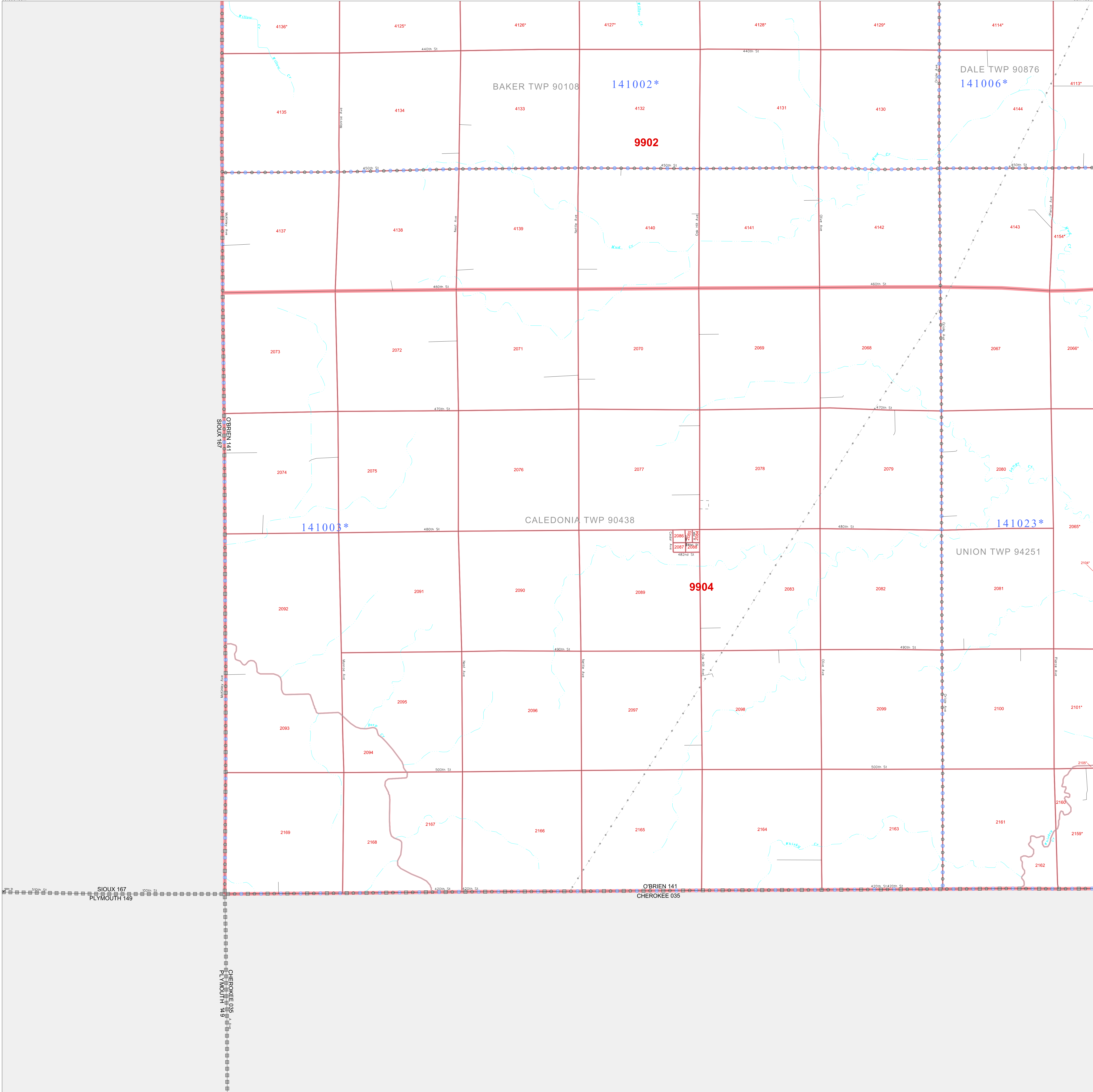
P.L. 94-171 COUNTY BLOCK MAP (CENSUS 2000)  
 (CKPLBLK) 2101914106000000000



P. L. 94-171 COUNTY BLOCK MAP (CENSUS 2000)

43 017537N  
95 896455W

43 017537N  
95 715647W



**GEOGRAPHIC AREAS LEGEND**

SYMBOL	NAME STYLE
*****	INTERNATIONAL
*****	AIR (FEDERAL)
*****	Trust Land
*****	STATE
*****	COUNTY
*****	MINOR CIVIL DIV.
*****	Incorporated Place*
*****	Census Designated Place*
*****	Corporate Offset Boundary
*****	Voting District*
*****	Census Tract
*****	BLOCK*

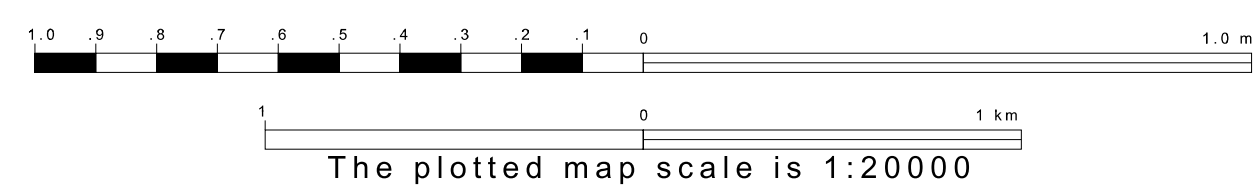
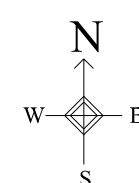
Military     Inset     Out Area

Abbreviation Reference: AIR = American Indian Reservation; Trust Land = Off-Reservation Trust Land

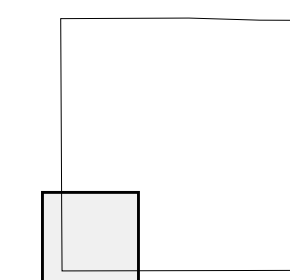
1 A \* \* following a place name indicates that the place is coterminous with a MCD name. A \* \* indicates that the place differs from the place name.  
 2 A \* \* following a VTD code indicates an actual voting district. Its absence indicates that the VTD is a pseudo voting district or no information is available as to its status.  
 3 A \* \* following a block number indicates that the block number is repeated elsewhere in the block.

42 884928N  
95 896455W

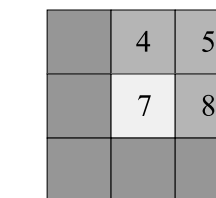
42 884928N  
95 715647W



Sheet Location within County



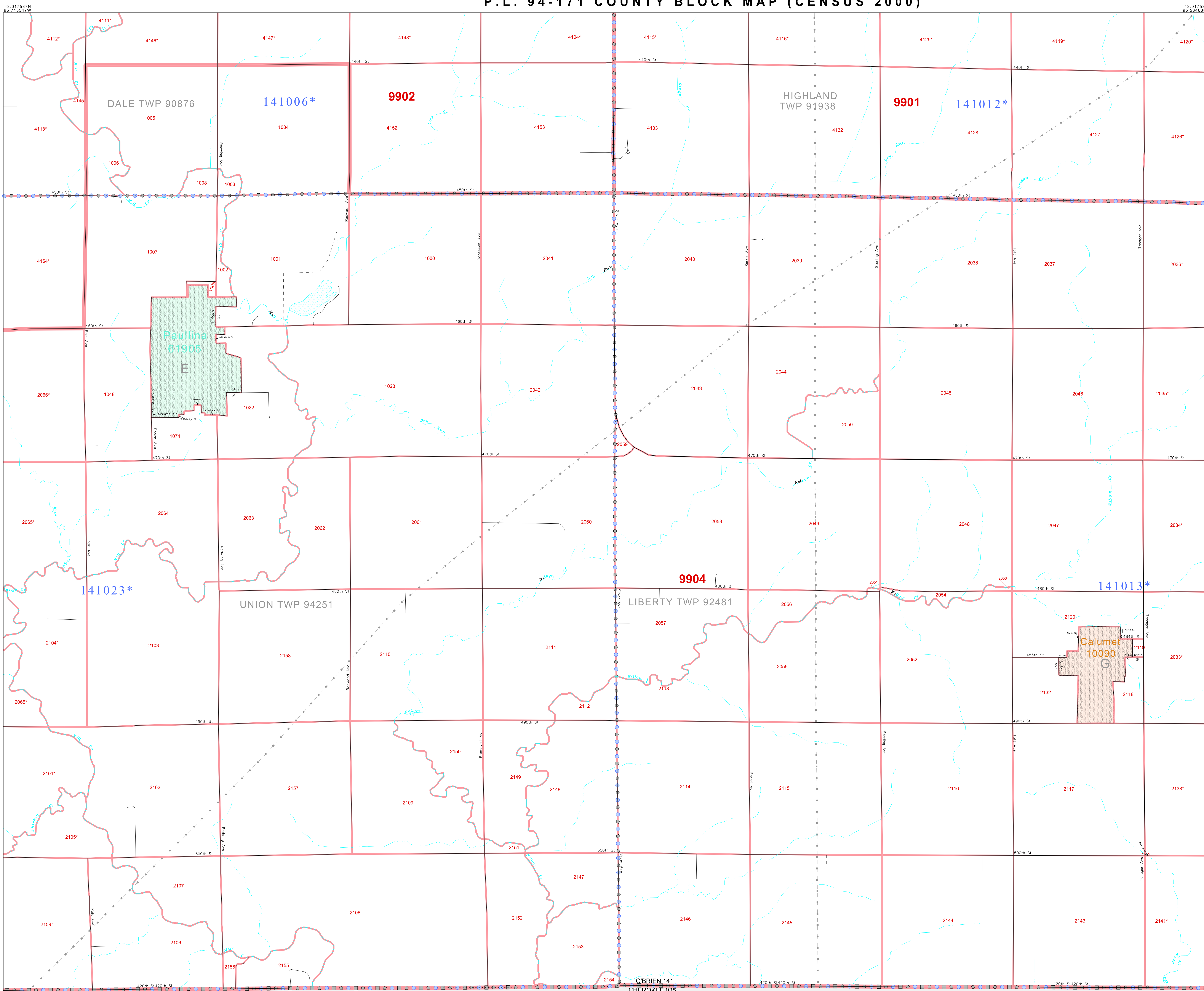
Key to Adjacent Sheets



ST: Iowa (19)  
COU: O'Brien (141)  
SHEET 7 OF 9 PARENT SHEETS



P. L. 94-171 COUNTY BLOCK MAP (CENSUS 2000)



**GEOGRAPHIC AREAS LEGEND**

SYMBOL	NAME STYLE
*****	INTERNATIONAL
*****	AIR (FEDERAL)
*****	Trust Land
*****	Trust Land
*****	STATE
*****	COUNTY
*****	MINOR CIVIL DIV.
*****	Incorporated Place <sup>1</sup>
*****	Census Designated Place <sup>1</sup>
*****	Corporate Offset Boundary
*****	Voting District <sup>2</sup>
*****	Census Tract
*****	BLOCK <sup>3</sup>

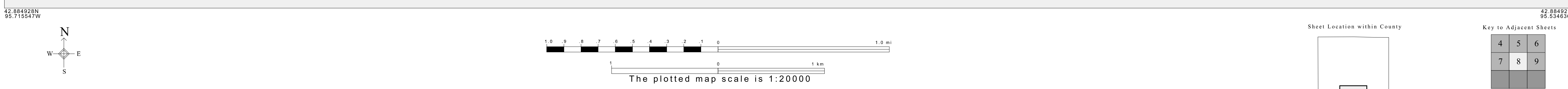
Abbreviation Reference: AIR = American Indian Reservation; Trust Land = Off-Reservation Trust Land

1 A \* \* following a place name indicates that the place is coterminous with a MCD. A \* \* indicates that the place is also a false MCD. In both cases, the MCD name is shown only when it differs from the place name.

2 A \* \* following a VTD code indicates an actual voting district. Its absence indicates that the VTD is a pseudo voting district or no information is available as to its status.

3 A \* \* following a block number indicates that the block number is repeated elsewhere in the block.

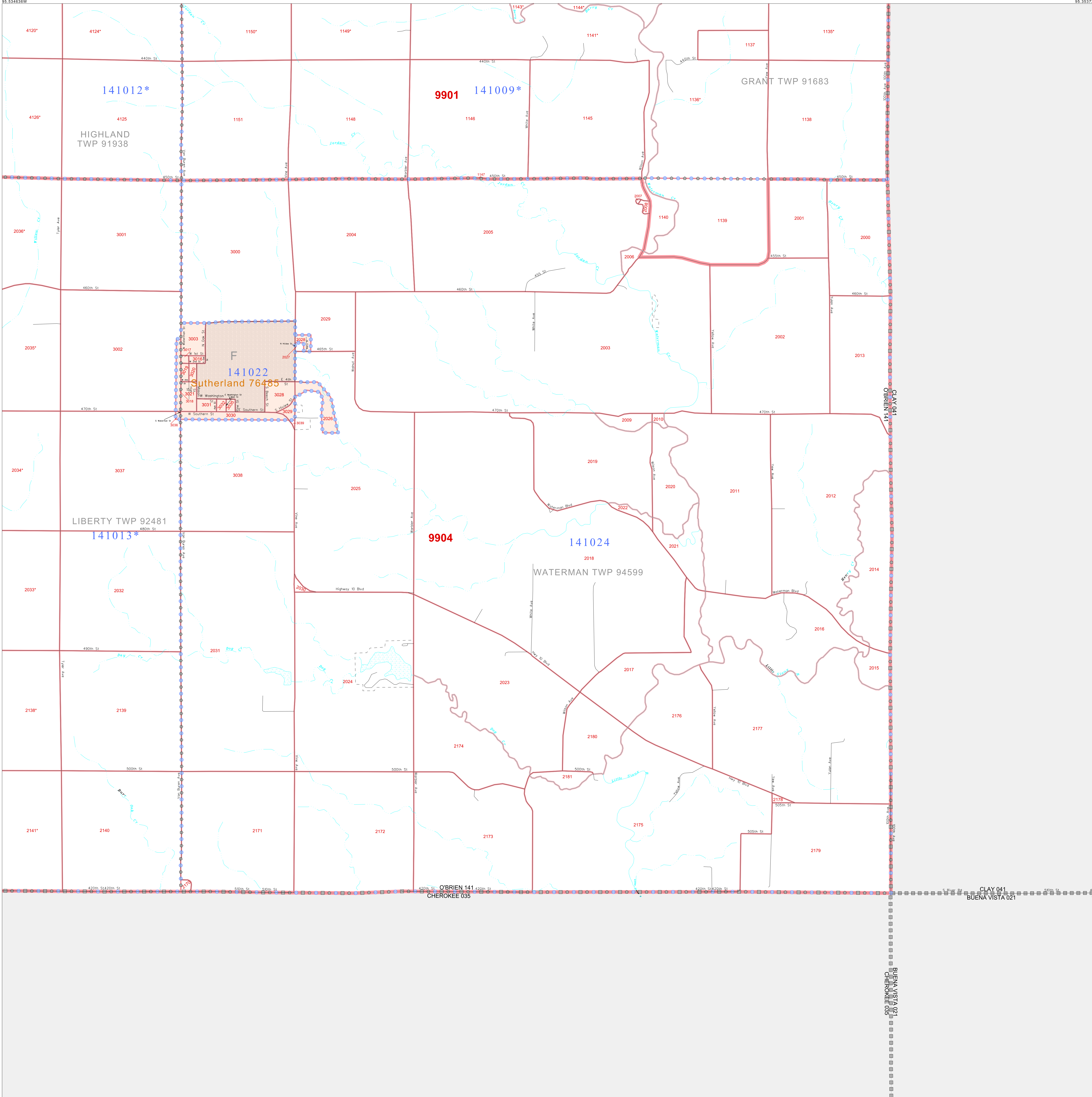
Inset Out Area



P.L. 94-171 COUNTY BLOCK MAP (CENSUS 2000)

43 017537N  
95 534836W

43 017537N  
95 353725W



**GEOGRAPHIC AREAS LEGEND**

SYMBOL	NAME STYLE
*****	INTERNATIONAL
*****	AIR (FEDERAL)
*****	Trust Land
*****	STATE
*****	COUNTY
*****	MINOR CIVIL DIV.
*****	Incorporated Place <sup>1</sup>
*****	Census Designated Place <sup>1</sup>
*****	Corporate Offset Boundary
*****	Voting District <sup>2</sup>
*****	Census Tract
*****	BLOCK <sup>3</sup>

Military     Inset     Out Area

Abbreviation Reference: AIR = American Indian Reservation; Trust Land = Off-Reservation Trust Land

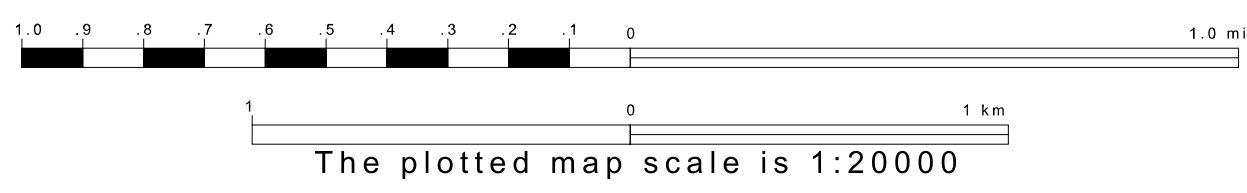
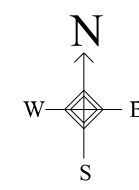
1 A "\*" following a place name indicates that the place is coterminous with a MCD. A "-" indicates that the place differs from the MCD. In both cases, the MCD name is shown only when it differs from the place name.

2 A "\*" following a VTD code indicates an actual voting district. Its absence indicates that the VTD is a pseudo voting district or no information is available as to its status.

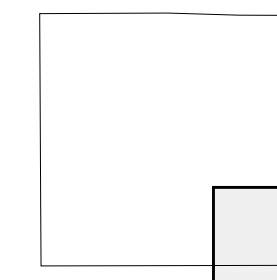
3 A "\*" following a block number indicates that the block number is repeated elsewhere in the block.

42 884928N  
95 534836W

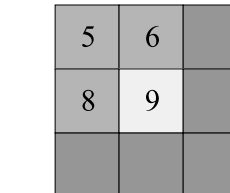
42 884928N  
95 353725W



Sheet Location within County



Key to Adjacent Sheets



ST: Iowa (19)  
COU: O'Brien (141)  
SHEET 9 OF 9 PARENT SHEETS



All legal boundaries and names are as of January 1, 2000. The boundaries shown on this map are for Census Bureau statistical data collection and tabulation purposes only; their depiction and designation for statistical purposes does not constitute a determination of jurisdictional authority or rights of ownership or entitlement. U.S. DEPARTMENT OF COMMERCE Economics and Statistics Administration U.S. Census Bureau

P. L. 94-171 COUNTY BLOCK MAP (CENSUS 2000)

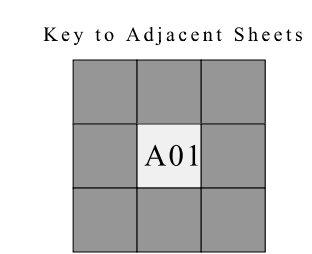
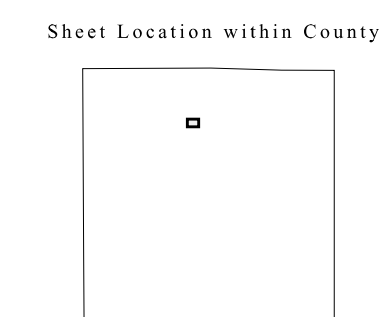
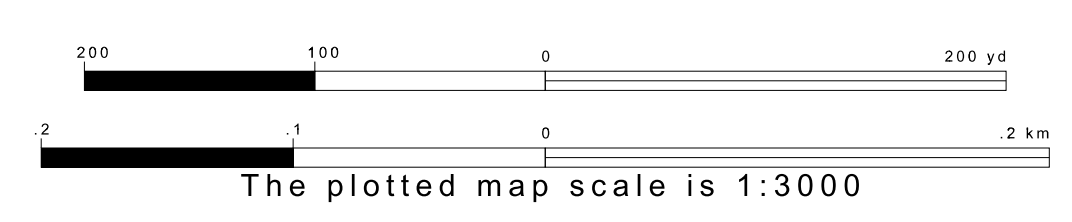
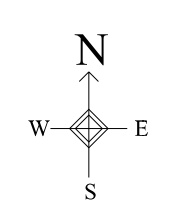
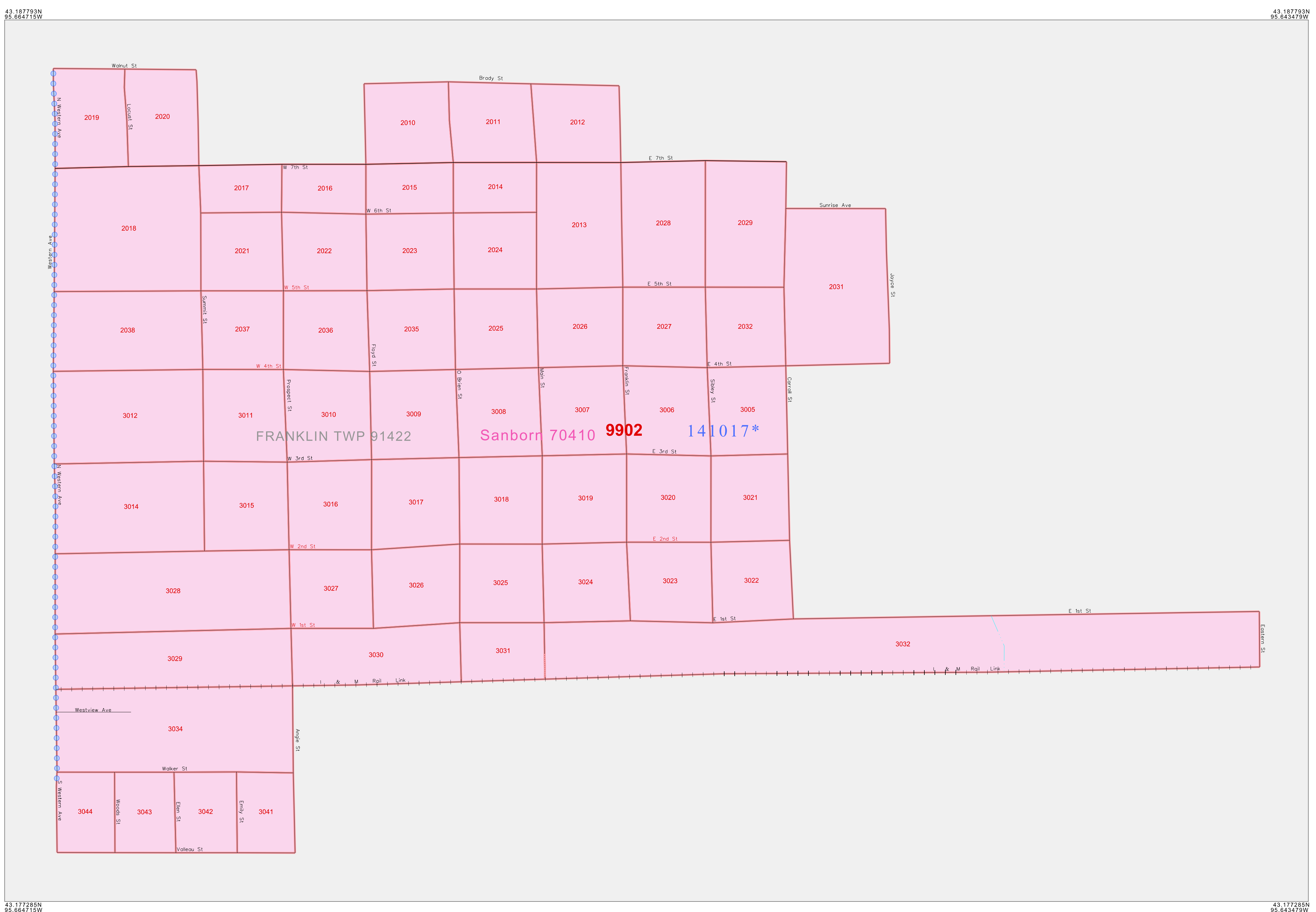
**GEOGRAPHIC AREAS LEGEND**

SYMBOL	NAME STYLE
*****	INTERNATIONAL
*****	AIR (FEDERAL)
*****	Trust Land
///////	STATE
	COUNTY
○○○○○	MINOR CIVIL DIV <sup>1</sup>
■■■■■	Incorporated Place <sup>1</sup>
■■■■■	Census Designated Place <sup>1</sup>
.....	Corporate Offset Boundary
●●●●●	Voting District <sup>1</sup>
————	Census Tract
————	BLOCK <sup>2</sup>

Military     Inset     Out Area

Abbreviation Reference: AIR = American Indian Reservation; Trust Land = Gift/Reservation Trust Land

1 A "\*" following a place name indicates that the place is consecutive with a MCD. A "-" indicates that the place differs from the place name.  
 2 A "\*" following a VTD code indicates an actual voting district. Its absence indicates that the VTD is a pseudo voting district or no information is available as to its status.  
 3 A "\*" following a block number indicates that the block number is repeated elsewhere in the block.



ST: Iowa (19)  
 COU: O'Brien (141)  
 INSET SHEET A01



All legal boundaries and names are as of January 1, 2000. The boundaries shown on this map are for Census Bureau statistical data collection and tabulation purposes only; their depiction and designation for statistical purposes does not constitute a determination of jurisdictional authority or rights of ownership or entitlement. U.S. DEPARTMENT OF COMMERCE Economics and Statistics Administration U.S. Census Bureau

P. L. 94-171 COUNTY BLOCK MAP (CENSUS 2000)

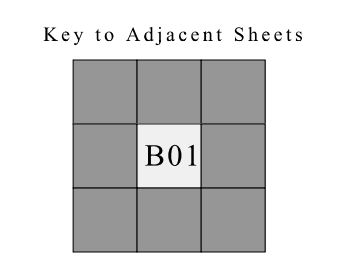
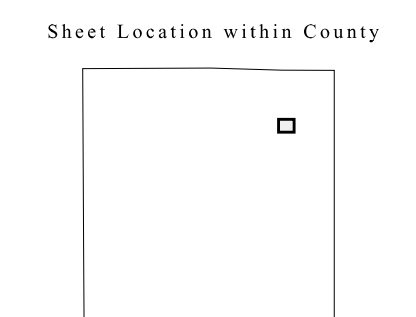
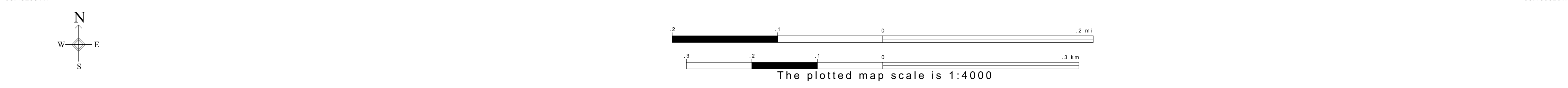
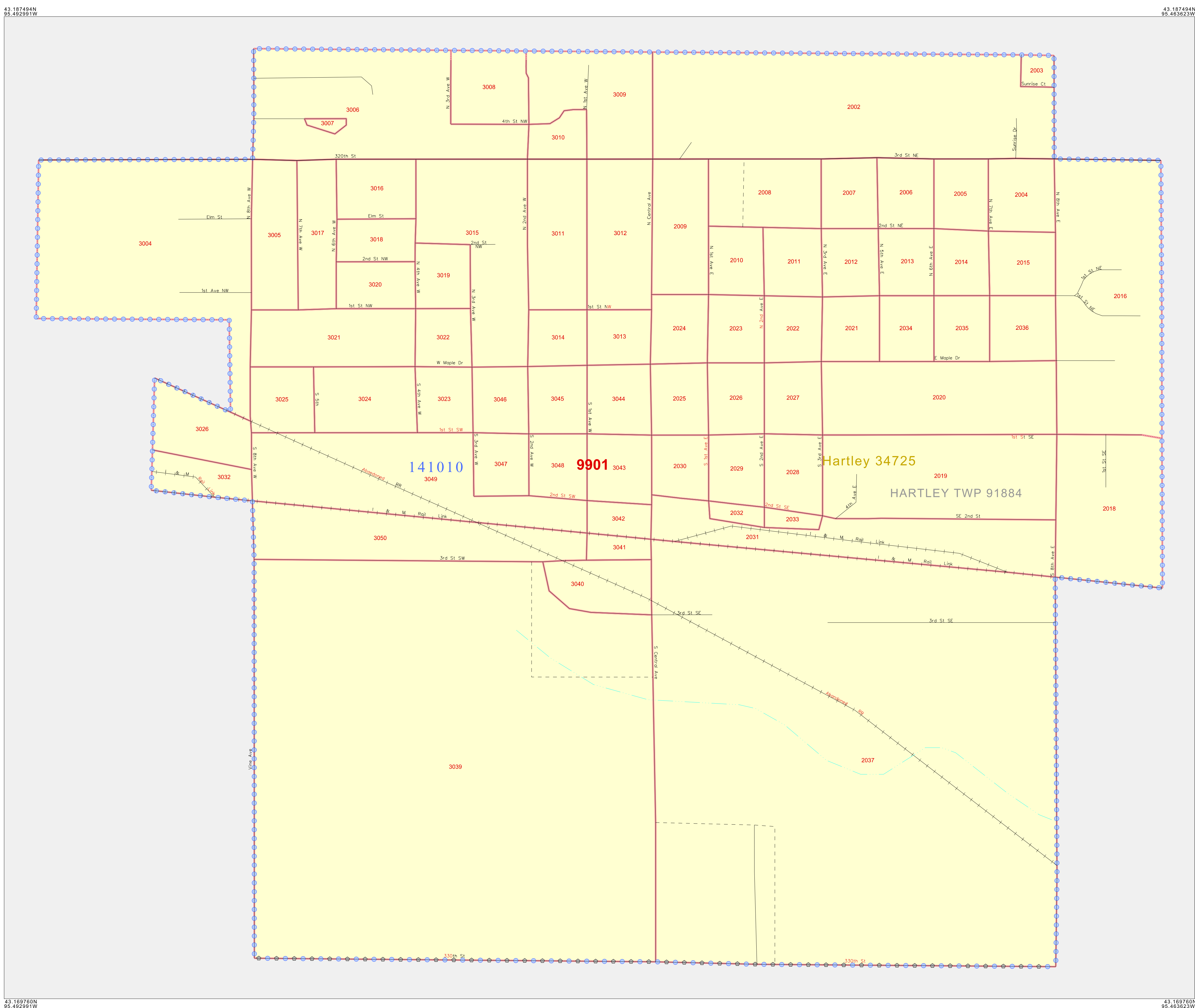
**GEOGRAPHIC AREAS LEGEND**

SYMBOL	NAME STYLE
*****	INTERNATIONAL
*****	AIR (FEDERAL)
*****	Trust Land
//////	STATE
	COUNTY
o-o-o-o	MINOR CIVIL DIV <sup>1</sup>
o-o-o-o	Incorporated Place <sup>1</sup>
o-o-o-o	Census Designated Place <sup>1</sup>
o-o-o-o	Corporate Offset Boundary
o-o-o-o	Voting District <sup>2</sup>
o-o-o-o	Census Tract
o-o-o-o	BLOCK <sup>3</sup>

Military     Inset     Out Area

Abbreviation Reference: AIR = American Indian Reservation; Trust Land = Off-Reservation Trust Land

1 A " " following a place name indicates that the place is coextensive with a MCD. A " " indicates that the place differs from the MCD. In both cases, the MCD name is shown only when it differs from the place name.  
 2 A " " following a VTD code indicates an actual voting district. Its absence indicates that the VTD is a pseudo voting district or no information is available as to its status.  
 3 A " " following a block number indicates that the block number is repeated elsewhere in the block.



ST: Iowa (19)  
 COU: O'Brien (141)  
 INSET SHEET B01



All legal boundaries and names are as of January 1, 2000.  
 The boundaries shown on this map are for Census Bureau statistical data collection and tabulation purposes only; their depiction and designation for statistical purposes does not constitute a determination of jurisdictional authority or rights of ownership or entitlement.  
 U.S. DEPARTMENT OF COMMERCE Economics and Statistics Administration U.S. Census Bureau

P. L. 94-171 COUNTY BLOCK MAP (CENSUS 2000)

**GEOGRAPHIC AREAS LEGEND**

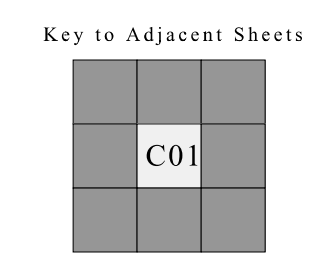
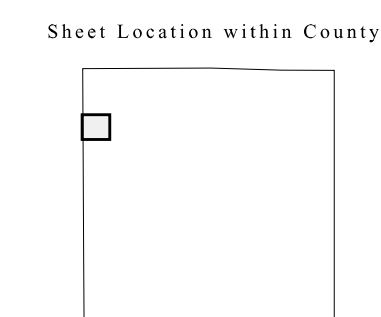
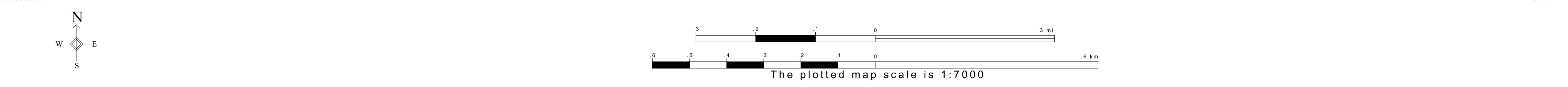
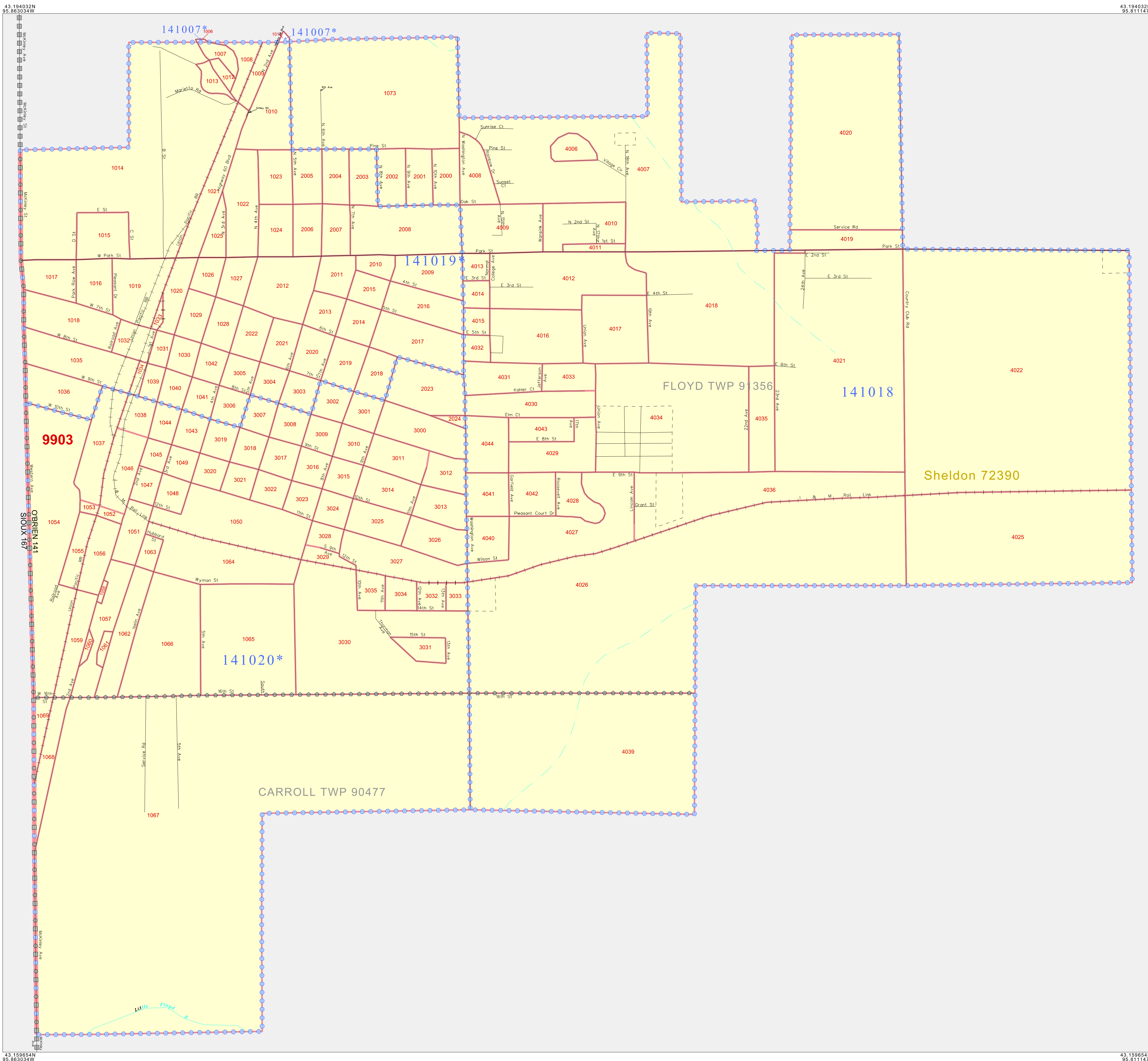
SYMBOL	NAME STYLE
*****	INTERNATIONAL
*****	AIR (FEDERAL)
*****	Trust Land
//////	STATE
	COUNTY
○○○○○	MINOR CIVIL DIV <sup>1</sup>
■■■■■	Incorporated Place <sup>1</sup>
■■■■■	Census Designated Place <sup>1</sup>
.....	Corporate Offset Boundary
.....	Voting District <sup>2</sup>
.....	Census Tract
.....	BLOCK <sup>3</sup>
.....	Military
.....	Inset
.....	Out Area

Abbreviation Reference: AIR = American Indian Reservation; Trust Land = Off-Reservation Trust Land

1 A "\*" following a place name indicates that the place is coterminous with a MCD. A "-" indicates that the place is other than a MCD. In both cases, the MCD name is shown only when it differs from the place name.

2 A "\*" following a VTD code indicates an actual voting district. Its absence indicates that the VTD is a pseudo voting district or no information is available as to its status.

3 A "\*" following a block number indicates that the block number is repeated elsewhere in the block.



ST: Iowa (19)  
 COU: O'Brien (141)  
 INSET SHEET C01



All legal boundaries and names are as of January 1, 2000. The boundaries shown on this map are for Census Bureau statistical data collection and tabulation purposes only; their depiction and designation for statistical purposes does not constitute a determination of jurisdictional authority or rights of ownership or entitlement. U.S. DEPARTMENT OF COMMERCE Economics and Statistics Administration U.S. Census Bureau

P.L. 94-171 COUNTY BLOCK MAP (CENSUS 2000)

**GEOGRAPHIC AREAS LEGEND**

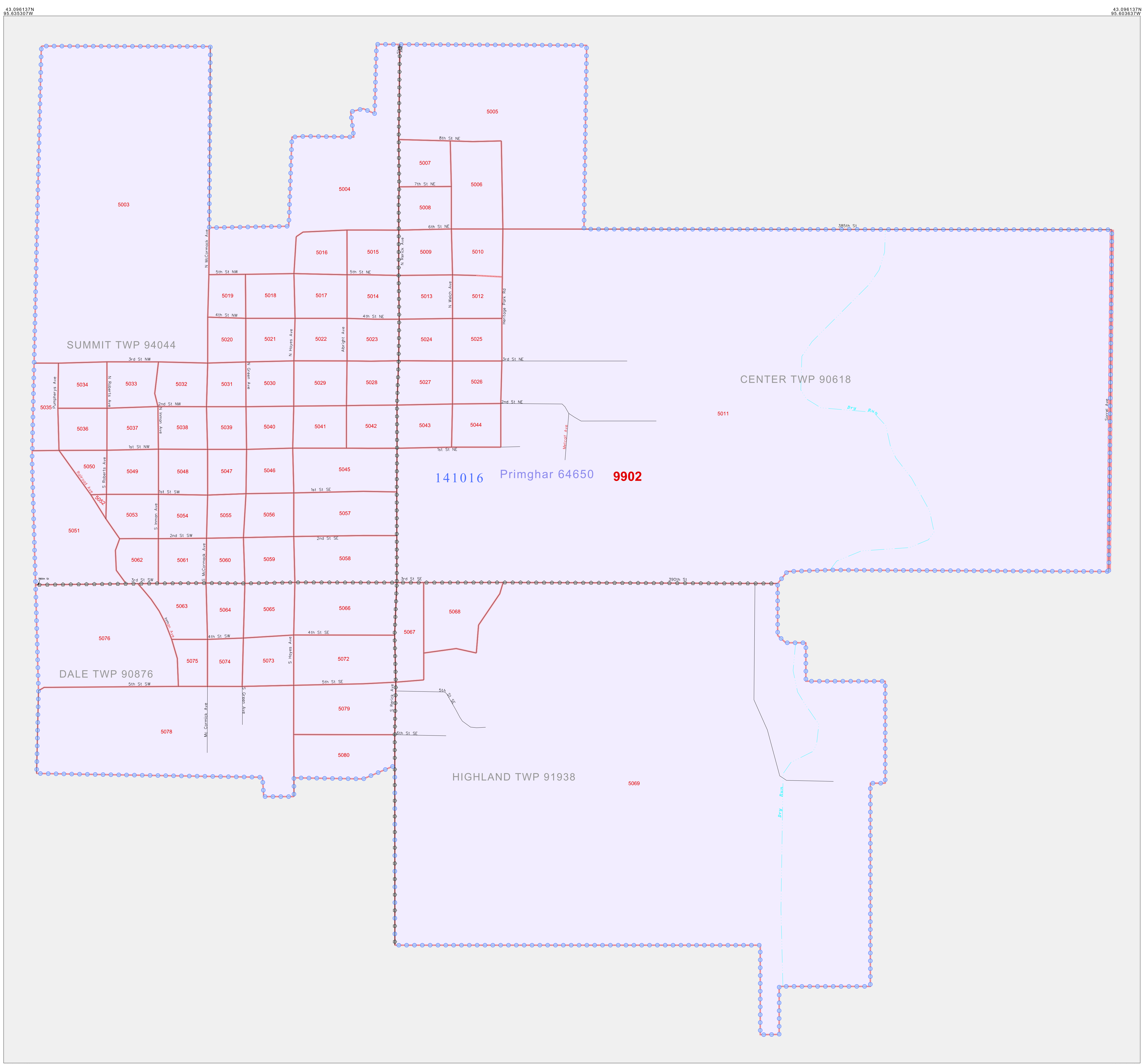
SYMBOL	NAME STYLE
*****	INTERNATIONAL
*****	AIR (FEDERAL)
*****	Trust Land
//////	STATE
	COUNTY
o-o-o-o-o	MINOR CIVIL DIV.
Yellow Box	Incorporated Place <sup>1</sup>
Light Blue Box	Census Designated Place <sup>1</sup>
Red Dashed Line	Corporate Offset Boundary
Blue Dotted Line	Voting District <sup>2</sup>
Red Solid Line	Census Tract
Blue Dotted Line	BLOCK <sup>3</sup>

Abbreviation Reference: AIR = American Indian Reservation; Trust Land = Off-Reservation Trust Land

1 A "\*" following a place name indicates that the place is coterminous with a MCD. A "-" indicates that the place differs from the MCD. In both cases, the MCD name is shown only when it differs from the place name.

2 A "\*" following a VTD code indicates an actual voting district. Its absence indicates that the VTD is a pseudo voting district or no information is available as to its status.

3 A "\*" following a block number indicates that the block number is repeated elsewhere in the block.



43 074742N 95 603537W

43 056137N 95 603537W

43 074742N 95 603537W

43 056137N 95 603537W

Sheet Location within County

Key to Adjacent Sheets

The plotted map scale is 1:4000

All legal boundaries and names are as of January 1, 2000. The boundaries shown on this map are for Census Bureau statistical data collection and tabulation purposes only; their depiction and designation for statistical purposes does not constitute a determination of jurisdictional authority or rights of ownership or entitlement. U.S. DEPARTMENT OF COMMERCE Economics and Statistics Administration U.S. Census Bureau

ST: Iowa (19)  
 COU: O'Brien (141)  
 INSET SHEET D01

P.L. 94-171 COUNTY BLOCK MAP (CENSUS 2000)  
 (CKFLBLK)2101914168010000000

P. L. 94-171 COUNTY BLOCK MAP (CENSUS 2000)

**GEOGRAPHIC AREAS LEGEND**

SYMBOL	NAME STYLE
*****	INTERNATIONAL
*****	AIR (FEDERAL)
*****	Trust Land
///////	STATE
	COUNTY
o-o-o-o-o	MINOR CIVIL DIV.
-----	Incorporated Place <sup>1</sup>
-----	Census Designated Place <sup>1</sup>
-----	Corporate Offset Boundary
.....	Voting District <sup>2</sup>
-----	Census Tract
-----	BLOCK <sup>3</sup>

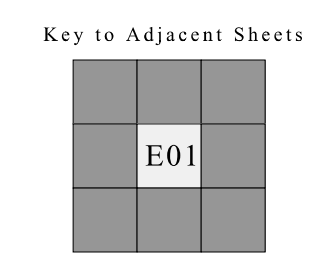
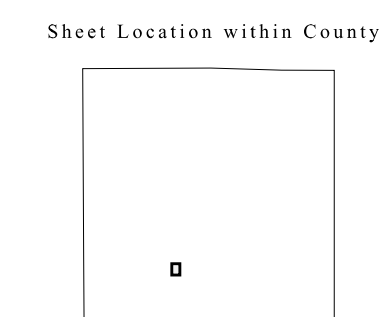
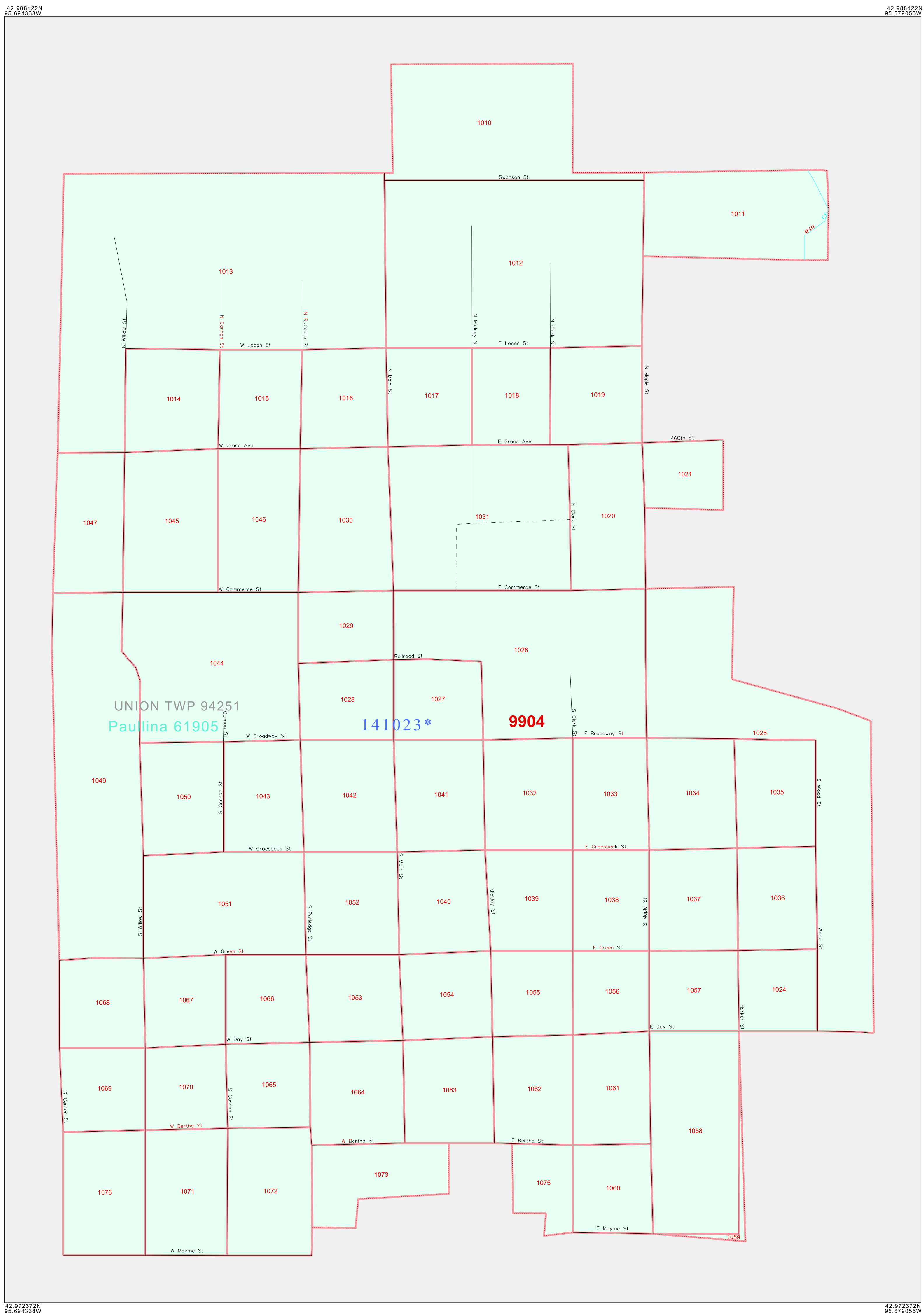
Military     Inset     Out Area

Abbreviation Reference: AIR = American Indian Reservation; Trust Land = Gift/Reservation Trust Land

1 A "\*" following a place name indicates that the place is coterminous with a MCD. A "-" indicates that the place differs from the MCD. In both cases, the MCD name is shown only when it differs from the place name.

2 A "\*" following a VTD code indicates an actual voting district. Its absence indicates that the VTD is a pseudo voting district or no information is available as to its status.

3 A "\*" following a block number indicates that the block number is repeated elsewhere in the block.



ST: Iowa (19)  
 COU: O'Brien (141)  
 INSET SHEET E01



All legal boundaries and names are as of January 1, 2000. The boundaries shown on this map are for Census Bureau statistical data collection and tabulation purposes only; their depiction and designation for statistical purposes does not constitute a determination of jurisdictional authority or rights of ownership or entitlement. U.S. DEPARTMENT OF COMMERCE Economics and Statistics Administration U.S. Census Bureau



P. L. 94-171 COUNTY BLOCK MAP (CENSUS 2000)

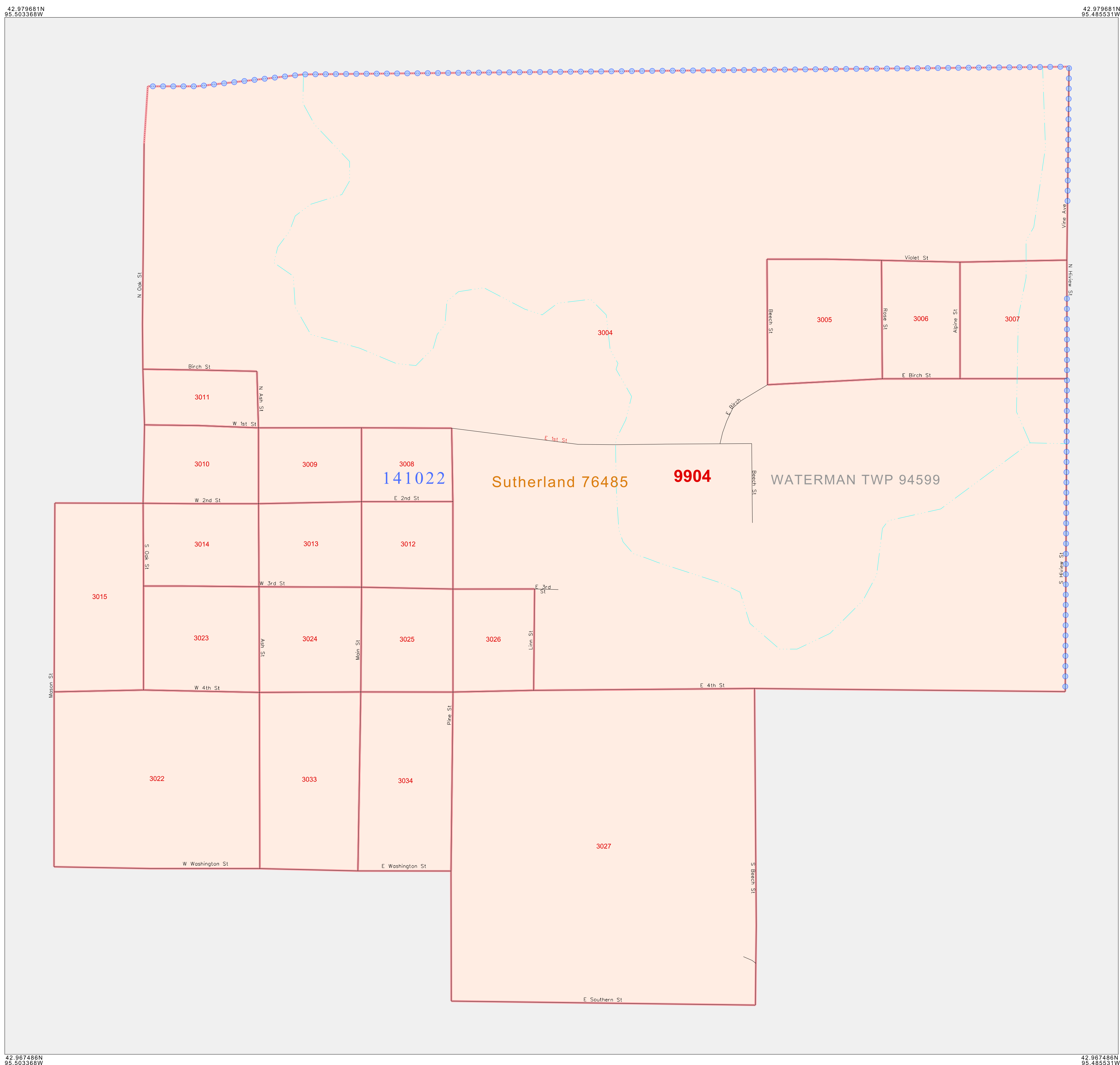
**GEOGRAPHIC AREAS LEGEND**

SYMBOL	NAME STYLE
*****	INTERNATIONAL
*****	AIR (FEDERAL)
*****	Trust Land
//////	STATE
	COUNTY
o-o-o-o	MINOR CIVIL DIV.
Yellow/Pink	Incorporated Place <sup>1</sup>
Yellow/Pink	Census Designated Place <sup>1</sup>
.....	Corporate Offset Boundary
.....	Voting District <sup>2</sup>
.....	Census Tract
.....	BLOCK <sup>3</sup>

Military  Inset  Out Area

Abbreviation Reference: AIR = American Indian Reservation; Trust Land = Off-Reservation Trust Land

1 A "\*" following a place name indicates that the place is consecutive with a MCD. A "-" indicates that the place differs from the MCD. In both cases, the MCD name is shown only when it differs from the place name.  
 2 A "\*" following a VTD code indicates an actual voting district. Its absence indicates that the VTD is a pseudo voting district or no information is available as to its status.  
 3 A "\*" following a block number indicates that the block number is repeated elsewhere in the block.



All legal boundaries and names are as of January 1, 2000. The boundaries shown on this map are for Census Bureau statistical data collection and tabulation purposes only; their depiction and designation for statistical purposes does not constitute a determination of jurisdictional authority or rights of ownership or entitlement. U.S. DEPARTMENT OF COMMERCE Economics and Statistics Administration U.S. Census Bureau

ST: Iowa (19)  
 COU: O'Brien (141)  
 INSET SHEET F01

P.L. 94-171 COUNTY BLOCK MAP (CENSUS 2000)  
 (CKPLBLK)2101914170010000000

P. L. 94-171 COUNTY BLOCK MAP (CENSUS 2000)

**GEOGRAPHIC AREAS LEGEND**

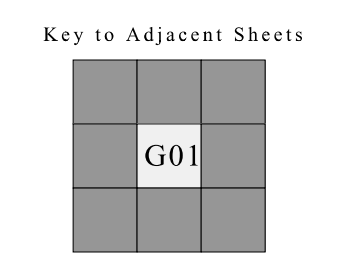
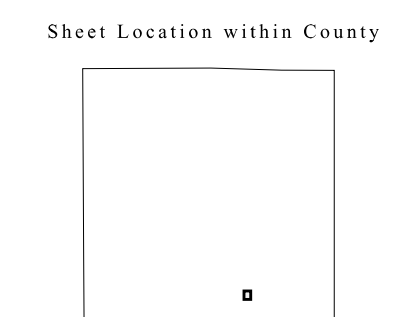
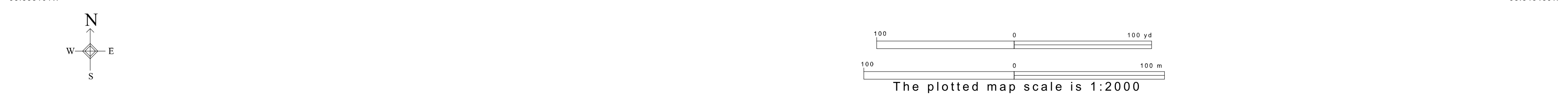
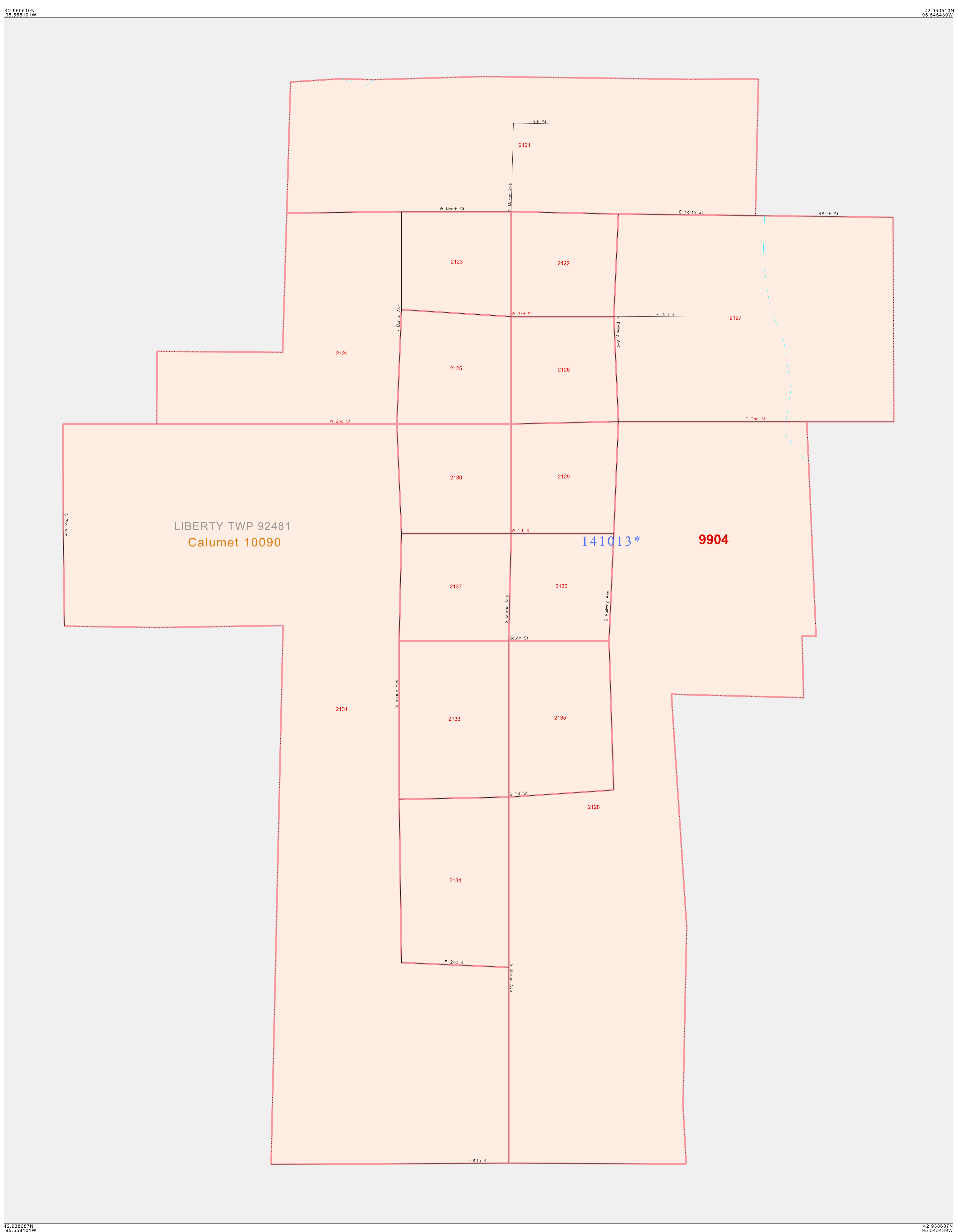
SYMBOL	NAME STYLE
*****	INTERNATIONAL
*****	AIR (FEDERAL)
*****	Trust Land
//////	STATE
	COUNTY
o-o-o-o	MINOR CIVIL DIV <sup>1</sup>
o-o-o-o	Incorporated Place <sup>1</sup>
o-o-o-o	Census Designated Place <sup>1</sup>
o-o-o-o	Corporate Offset Boundary
o-o-o-o	Voting District <sup>2</sup>
o-o-o-o	Census Tract
o-o-o-o	BLOCK <sup>3</sup>

Abbreviation Reference: AIR = American Indian Reservation; Trust Land = Gift/Reservation Trust Land

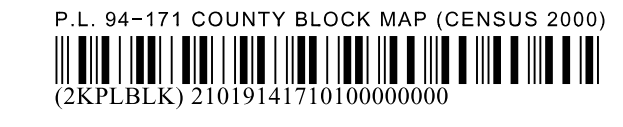
1 A "\*" following a place name indicates that the place is coterminous with a MCD. A "-" indicates that the place differs from the MCD. In both cases, the MCD name is shown only when it differs from the place name.

2 A "\*" following a VTD code indicates an actual voting district. Its absence indicates that the VTD is a pseudo voting district or no information is available as to its status.

3 A "\*" following a block number indicates that the block number is repeated elsewhere in the block.



ST: Iowa (19)  
 COU: O'Brien (141)  
 INSET SHEET G01



All legal boundaries and names are as of January 1, 2000. The boundaries shown on this map are for Census Bureau statistical data collection and tabulation purposes only; their depiction and designation for statistical purposes does not constitute a determination of jurisdictional authority or rights of ownership or entitlement. U.S. DEPARTMENT OF COMMERCE Economics and Statistics Administration U.S. Census Bureau