

CENSUS TRACT OUTLINE MAP (CENSUS 2000)

ABBREVIATED LEGEND

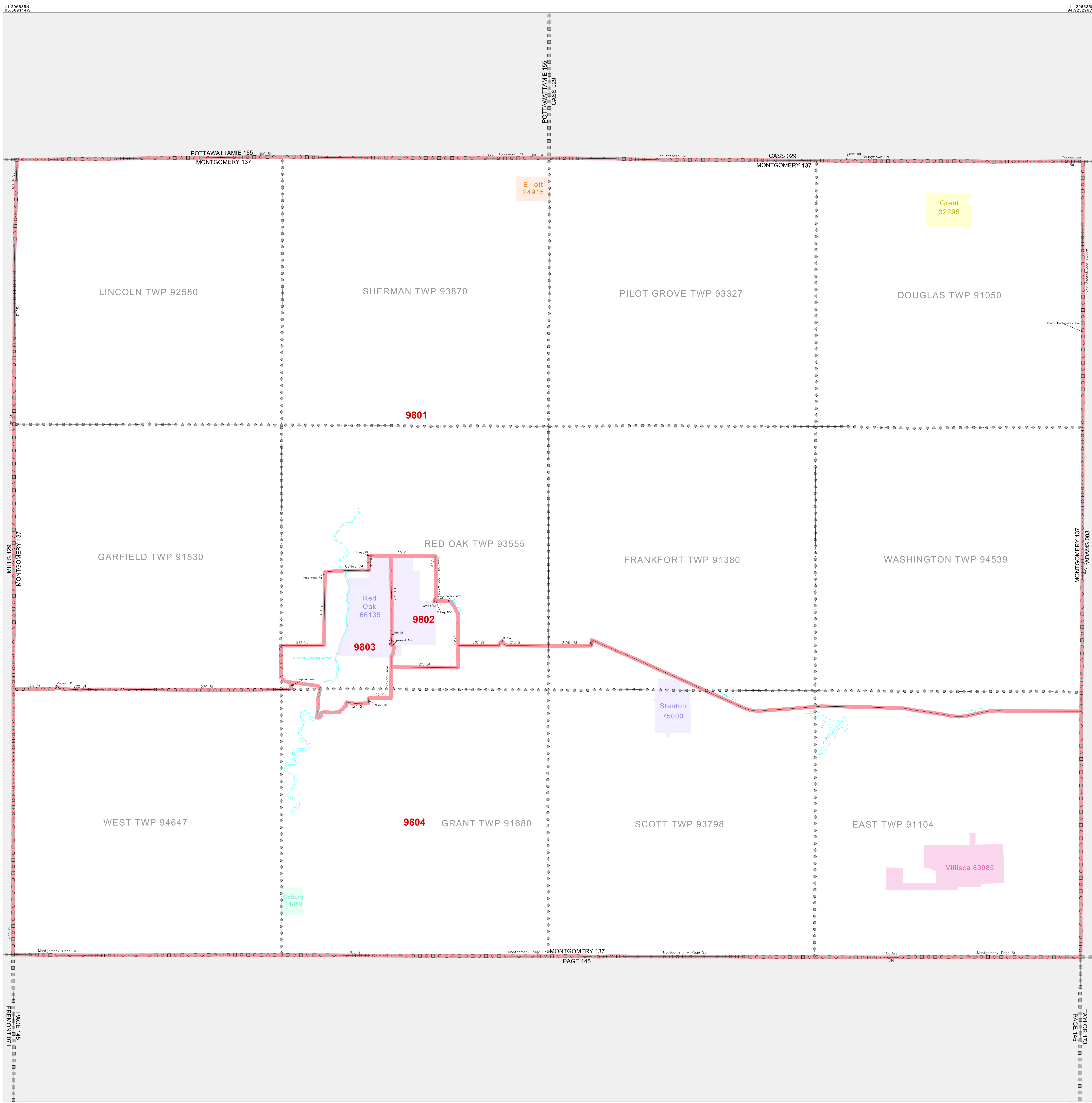
SYMBOL	NAME STYLE
☆☆☆☆	INTERNATIONAL
☆☆☆☆	AIR (FEDERAL)
☆☆☆☆	Trust Land
☆☆☆☆	OTSA / TDSA
☆☆☆☆	TRIBAL SUBDIVISION
☆☆☆☆	AIR (State)
☆☆☆☆	SDA/SA
■■■■	STATE
■■■■	COUNTY
○○○○	MINOR CIVIL DIV' Consolidated City
■■■■	Incorporated Place'
■■■■	Census Designated Place'
■■■■	Census Tract

Abbreviation Reference: AIR = American Indian Reservation; Trust Land = Off-Reservation Trust Land; OTSA = Oklahoma Tribal Statistical Area; TDSA = Tribal Designated Statistical Area; Tribal Subdivision = American Indian Tribal Subdivision; SDA/SA = State Designated American Indian Statistical Area

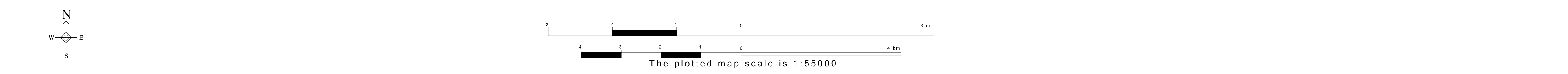
1. A "*" following a place name indicates that the place is consistent with a MCD. A "-" indicates that the place is also a false MCD. In both cases, the MCD name is shown only when it differs from the place name.

FEATURES	FEATURES
All Roads	Stream/Channel
Railroad	Intermittent Stream
Pipe/Power Line	River/Lake
Physical Feature	Glacier
Navigable Boundary	

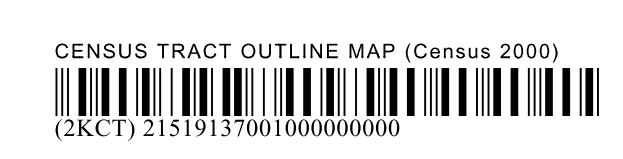
Military
Inset
Out Area



MONTGOMERY 137
PAGE 145



ST: Iowa (19)
COU: Montgomery (137)
SHEET 1 OF 1 PARENT SHEET



All legal boundaries and names are as of January 1, 2000. The boundaries shown on this map are for Census Bureau statistical data collection and tabulation purposes only; their depiction and designation for statistical purposes does not constitute a determination of jurisdictional authority or rights of ownership or entitlement. U.S. DEPARTMENT OF COMMERCE Economics and Statistics Administration U.S. Census Bureau