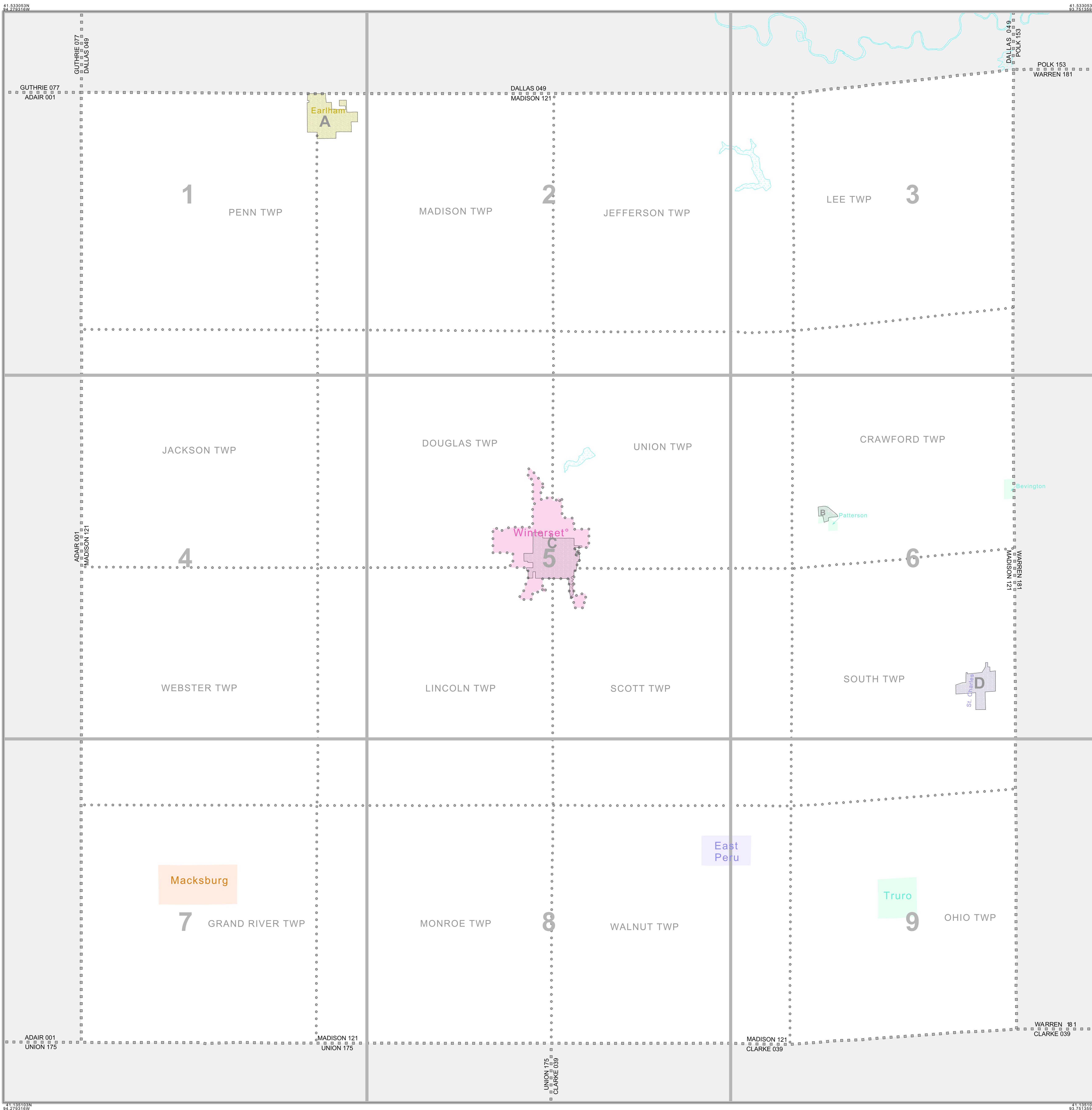


INDEX FOR P.L. 94-171 COUNTY BLOCK MAP (CENSUS 2000)



**INDEX MAP LEGEND**

SYMBOL	NAME STYLE
*****	INTERNATIONAL
-----	AIR (FEDERAL)
-----	Trust Land/HLL
-----	OTSA/ANVSA/TDSA
-----	TRIBAL SUBDIVISION
-----	AIR (State)
-----	SDA/SA
-----	ANRC
-----	STATE
-----	COUNTY
-----	MINOR CIVIL DIV.¹
-----	Consolidated City
-----	Incorporated Place¹
-----	Census Designated Place¹
Inset	Inset Area
Out Area	Out Area

Abbreviation Reference: AIR = American Indian Reservation; Trust Land = Off-Reservation Trust Land; ANRC = Alaska Native Regional Corporation; OTSA = Tribal Designated Statistical Area; Tribal Designated Statistical Area; American Indian Tribal Subdivision; American Indian Reservation (State); State Designated American Indian Statistical Area; Alaska Native Regional Corporation; State or Statistically Equivalent Entity; County or Statistically Equivalent Entity; Minor Civil Division (MCD)¹; Census County Division (CCD); Consolidated City; Incorporated Place¹; Census Designated Place (CDP)¹; Corporate Offset Boundary; Voting District (VTD)²; Census Tract; Block³

**P.L. 94-171 COUNTY BLOCK MAP LEGEND (CENSUS 2000)**

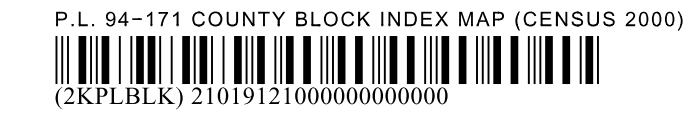
SYMBOL DESCRIPTION	SYMBOL	NAME STYLE
International	*****	CANADA
American Indian Reservation (Federal)	*****	L'ANSE RES (1880)
Off-Reservation Trust Land, Hawaiian Home Land	*****	T1880
Oklahoma Tribal Statistical Area, Alaska Native Village Statistical Area, Tribal Designated Statistical Area	*****	KAW OTSA (5340)
American Indian Tribal Subdivision	*****	SHONTO (620)
American Indian Reservation (State)	*****	Tama Res (4125)
State Designated American Indian Statistical Area	*****	Lumbee (9815)
Alaska Native Regional Corporation	*****	NANA ANRC 52120
State or Statistically Equivalent Entity	*****	NEW YORK 36
County or Statistically Equivalent Entity	*****	ERIE 029
Minor Civil Division (MCD)¹	*****	PIKE TWP 59742
Census County Division (CCD)	*****	KULA CCD 91890
Consolidated City	*****	Milford 47500
Incorporated Place¹	*****	Rome 63418
Census Designated Place (CDP)¹	*****	Zena 84187
Corporate Offset Boundary	-----	
Voting District (VTD)²	-----	023*
Census Tract	-----	5702.01
Block³	-----	1320

FEATURE	SYMBOL	FEATURE	SYMBOL
Interstate or Other Highway	-----	Perennial Stream or Shoreline	-----
Secondary Road	-----	Intermittent Stream or Shoreline	-----
Jeep Trail, Walkway, Stairway, or Ferry	-----	Large River or Lake	-----
Railroad	-----	Glacier	-----
Pipelining or Power Line	-----	Military Installation	-----
Ridge, Fence, or Other Physical Feature	-----	Inset Area	-----
Property Line or Fence Line	-----	Outside Subject Area	-----
Nonvisible Boundary or Feature Not Elsewhere Classified	-----		

Where international, state, and/or county boundaries coincide, the map shows the boundary symbol for only the highest-ranking of these boundaries.  
 ¹ A " " following a place name indicates that the place is coterminous with a MCD. A " " following an incorporated place name indicates that the place is also a false MCD. In both cases, the MCD name is shown only when it differs from the place name.  
 ² A " " following a VTD code indicates an actual voting district. Its absence indicates that the VTD is a pseudo voting district or no information is available as to its status.  
 ³ A " " following a block number indicates that the block number is repeated elsewhere in the block.

All legal boundaries and names are as of January 1, 2000. The boundaries shown on this map are for Census Bureau statistical data collection and tabulation purposes only; their depiction and designation for statistical purposes does not constitute a determination of jurisdictional authority or rights of ownership or entitlement. U.S. DEPARTMENT OF COMMERCE Economics and Statistics Administration U.S. Census Bureau

ST: Iowa (19)  
 COU: Madison (121)  
 INDEX MAP (TOTAL PARENT SHEETS 9 TOTAL INSET SHEETS 4)



# P.L. 94-171 COUNTY BLOCK MAP LEGEND (CENSUS 2000)

<u>SYMBOL DESCRIPTION</u>	<u>SYMBOL</u>	<u>NAME STYLE</u>
International	☆☆☆☆☆☆	<b>CANADA</b>
American Indian Reservation (Federal)	☆☆☆☆☆☆	<b>L'ANSE RES (1880)</b>
Off-Reservation Trust Land, Hawaiian Home Land	☆☆☆☆☆☆	<b>T1880</b>
Oklahoma Tribal Statistical Area, Alaska Native Village Statistical Area, Tribal Designated Statistical Area	◆◆◆◆◆◆◆	<b>KAW OTSA (5340)</b>
American Indian Tribal Subdivision	◆◆◆◆◆◆◆	<b>SHONTO (620)</b>
American Indian Reservation (State)	/// /// /// ///	<b>Tama Res (4125)</b>
State Designated American Indian Statistical Area	◇◇◇◇◇◇◇	<b>Lumbee (9815)</b>
Alaska Native Regional Corporation	▽ ▲ ▽ ▲ ▽ ▲ ▽	<b>NANA ANRC 52120</b>
State or Statistically Equivalent Entity	/// /// /// ///	<b>NEW YORK 36</b>
County or Statistically Equivalent Entity	■ ■ ■ ■ ■ ■ ■	<b>ERIE 029</b>
Minor Civil Division (MCD) <sup>1</sup>	⬢ ⬢ ⬢ ⬢ ⬢ ⬢ ⬢	<b>PIKE TWP 59742</b>
Census County Division (CCD)	⬢ ⬢ ⬢ ⬢ ⬢ ⬢ ⬢	<b>KULA CCD 91890</b>
Consolidated City	○ ○ ○ ○ ○ ○ ○	<b>Milford 47500</b>
Incorporated Place <sup>1</sup>		<b>Rome 63418</b>
Census Designated Place (CDP) <sup>1</sup>		<b>Zena 84187</b>
Corporate Offset Boundary	.....	
Voting District (VTD) <sup>2</sup>	● ● ● ● ● ● ●	<b>023*</b>
Census Tract		<b>5702.01</b>
Block <sup>3</sup>		<b>1326</b>

<u>FEATURE</u>	<u>SYMBOL</u>	<u>FEATURE</u>	<u>SYMBOL</u>
Interstate or Other Highway		Perennial Stream or Shoreline	
Secondary Road		Intermittent Stream or Shoreline	
Jeep Trail, Walkway, Stairway, or Ferry		Large River or Lake	
Railroad		Glacier	
Pipeline or Power Line		Military Installation	
Ridge, Fence, or Other Physical Feature		Inset Area	
Property Line or Fence Line		Outside Subject Area	
Nonvisible Boundary or Feature Not Elsewhere Classified			

Where international, state, and/or county boundaries coincide, the map shows the boundary symbol for only the highest-ranking of these boundaries.

<sup>1</sup> A ' \* ' following a place name indicates that the place is coextensive with a MCD. A ' ° ' following an incorporated place name indicates that the place is also a false MCD. In both cases, the MCD name is shown only when it differs from the place name.

<sup>2</sup> A ' \* ' following a VTD code indicates an actual voting district. Its absence indicates that the VTD is a pseudo voting district or no information is available as to its status.

<sup>3</sup> A ' \* ' following a block number indicates that the block number is repeated elsewhere in the block.

P. L. 94-171 COUNTY BLOCK MAP (CENSUS 2000)

41 533054N  
94 279316W

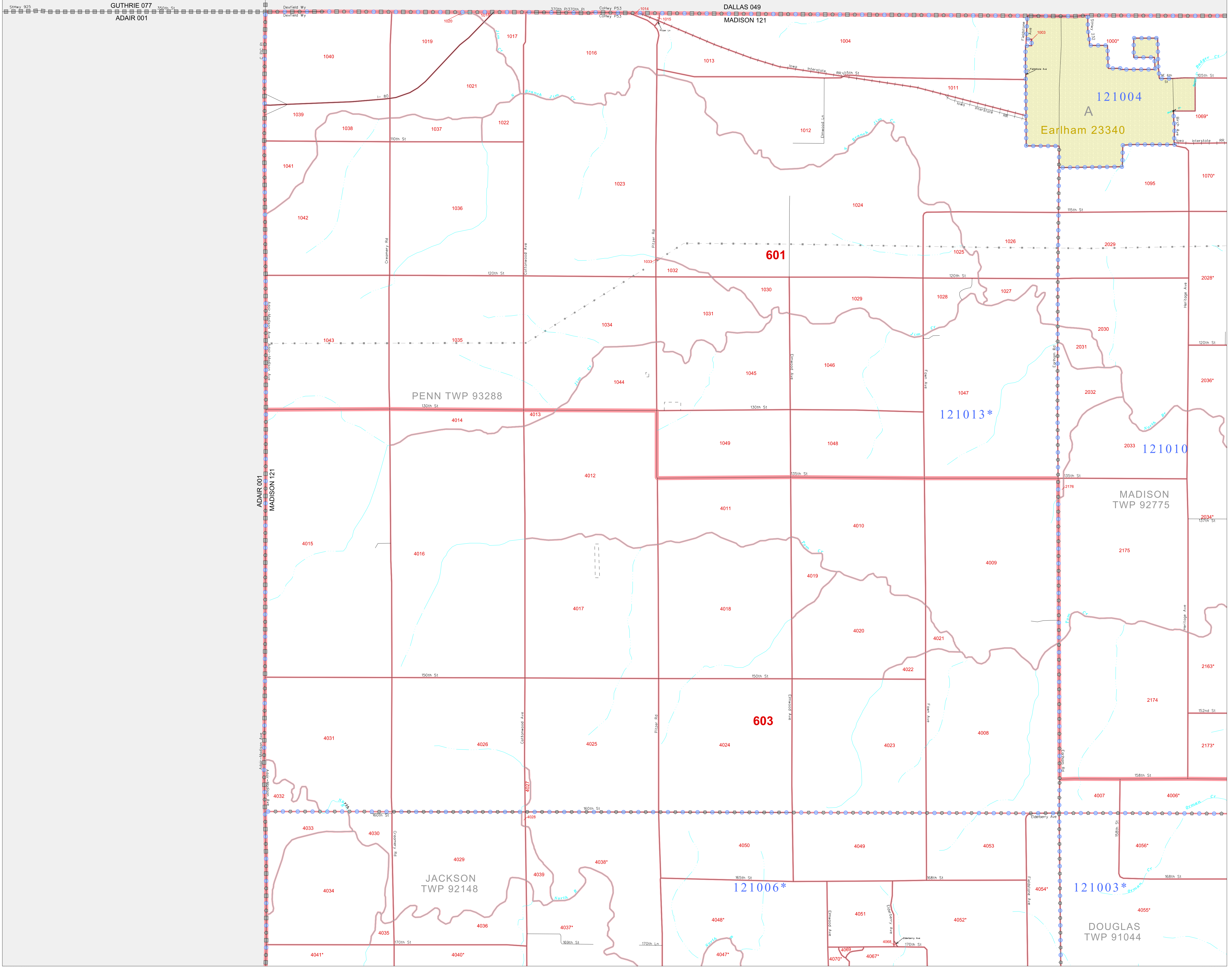
41 533054N  
94 103329W

GEOGRAPHIC AREAS LEGEND

SYMBOL	NAME STYLE
*****	INTERNATIONAL
*****	AIR (FEDERAL)
*****	Trust Land
*****	STATE
*****	COUNTY
*****	MINOR CIVIL DIV.
*****	Incorporated Place <sup>1</sup>
*****	Census Designated Place <sup>1</sup>
*****	Corporate Offset Boundary
*****	Voting District <sup>2</sup>
*****	Census Tract
*****	BLOCK <sup>3</sup>

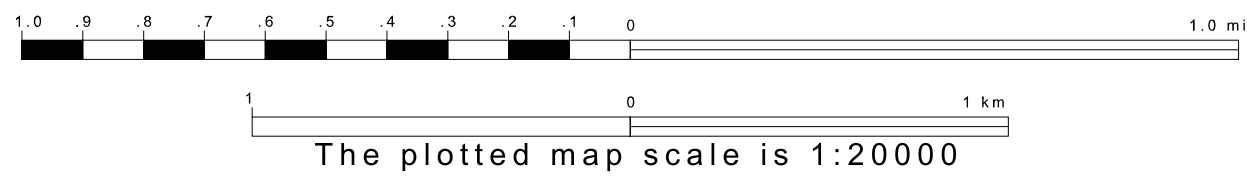
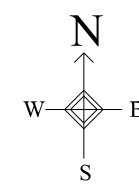
Abbreviation Reference: AIR = American Indian Reservation; Trust Land = Off-Reservation Trust Land

- 1 A \* \* following a place name indicates that the place is coterminous with a MCD. A \* indicates that the place differs from the MCD. In both cases, the MCD name is shown only when it differs from the place name.
- 2 A \* \* following a VTD code indicates an actual voting district. Its absence indicates that the VTD is a pseudo voting district or no information is available as to its status.
- 3 A \* \* following a block number indicates that the block number is repeated elsewhere in the block.

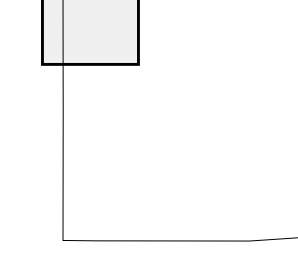


41 400404N  
94 279316W

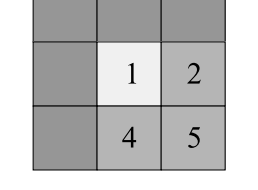
41 400404N  
94 103329W



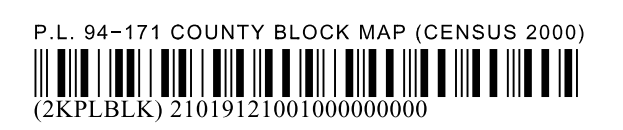
Sheet Location within County



Key to Adjacent Sheets



ST: Iowa (19)  
COU: Madison (121)  
SHEET 1 OF 9 PARENT SHEETS



P.L. 94-171 COUNTY BLOCK MAP (CENSUS 2000)

41 533054N  
94 103329W

41 533054N  
93 927343W

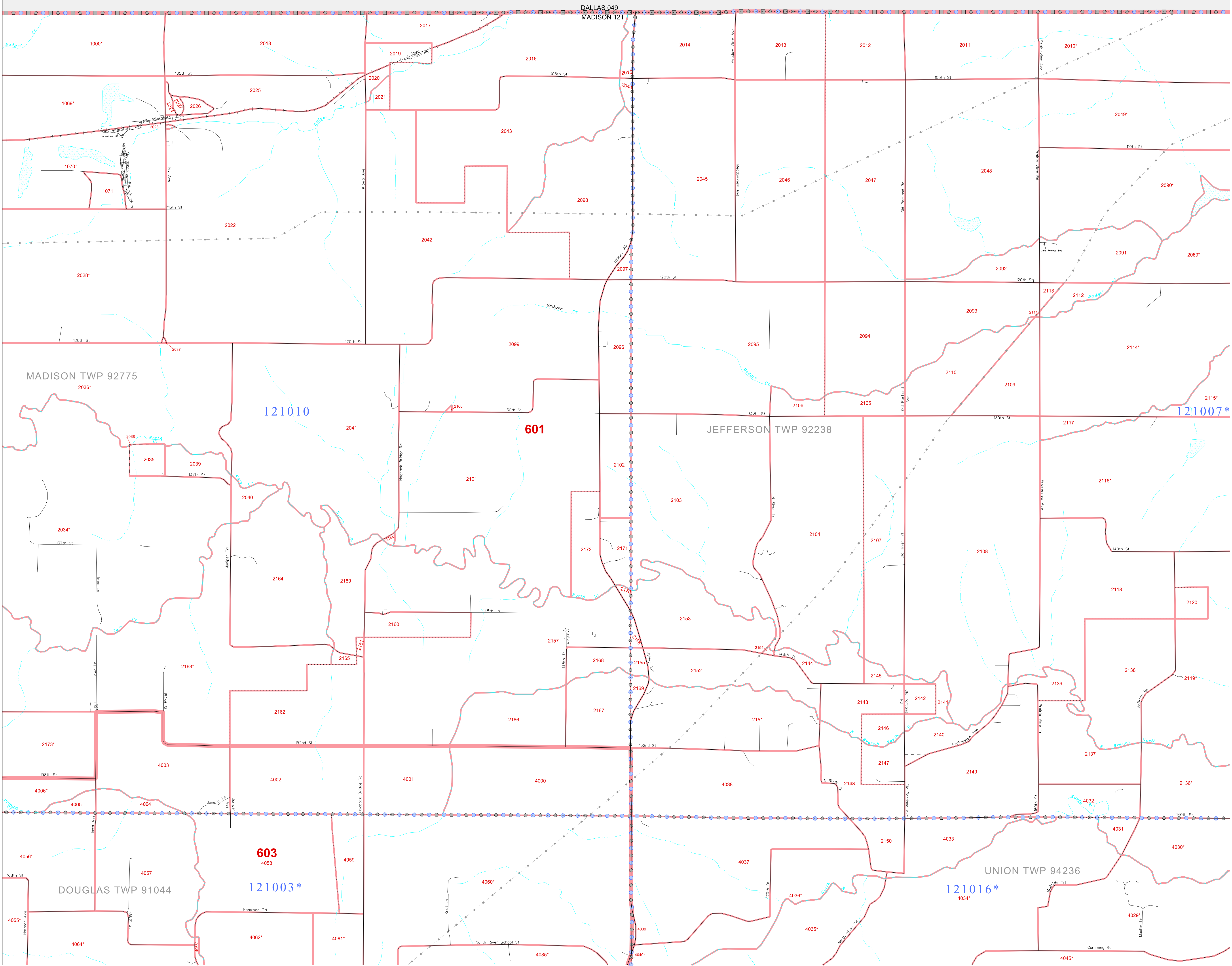
**GEOGRAPHIC AREAS LEGEND**

SYMBOL	NAME STYLE
*****	<b>INTERNATIONAL</b>
*****	<b>AIR (FEDERAL)</b>
*****	<b>Trust Land</b>
*****	<b>STATE</b>
*****	<b>COUNTY</b>
*****	<b>MINOR CIVIL DIV.</b>
*****	<b>Incorporated Place<sup>1</sup></b>
*****	<b>Census Designated Place<sup>1</sup></b>
*****	<b>Corporate Offset Boundary</b>
*****	<b>Voting District<sup>2</sup></b>
*****	<b>Census Tract</b>
*****	<b>BLOCK<sup>3</sup></b>

Military     Inset     Out Area

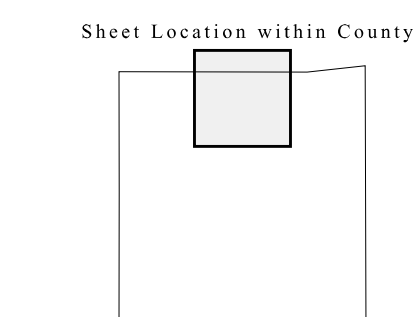
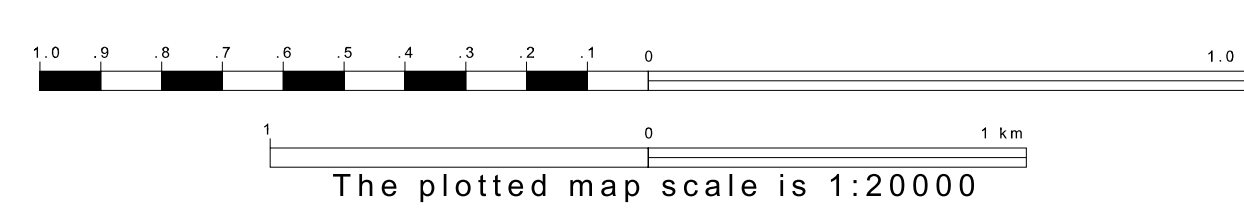
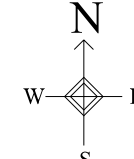
Abbreviation Reference: AIR = American Indian Reservation; Trust Land = Gift/Reservation Trust Land

1 A "\*" following a place name indicates that the place is coterminous with a MCD. A "-" indicates that the place differs from the MCD. In both cases, the MCD name is shown only when it differs from the place name.  
 2 A "\*" following a VTD code indicates an actual voting district. Its absence indicates that the VTD is a pseudo voting district or no information is available as to its status.  
 3 A "\*" following a block number indicates that the block number is repeated elsewhere in the block.



41 400404N  
94 103329W

41 400404N  
93 927343W



Key to Adjacent Sheets

1	2	3
4	5	6

ST: Iowa (19)  
 COU: Madison (121)  
 SHEET 2 OF 9 PARENT SHEETS

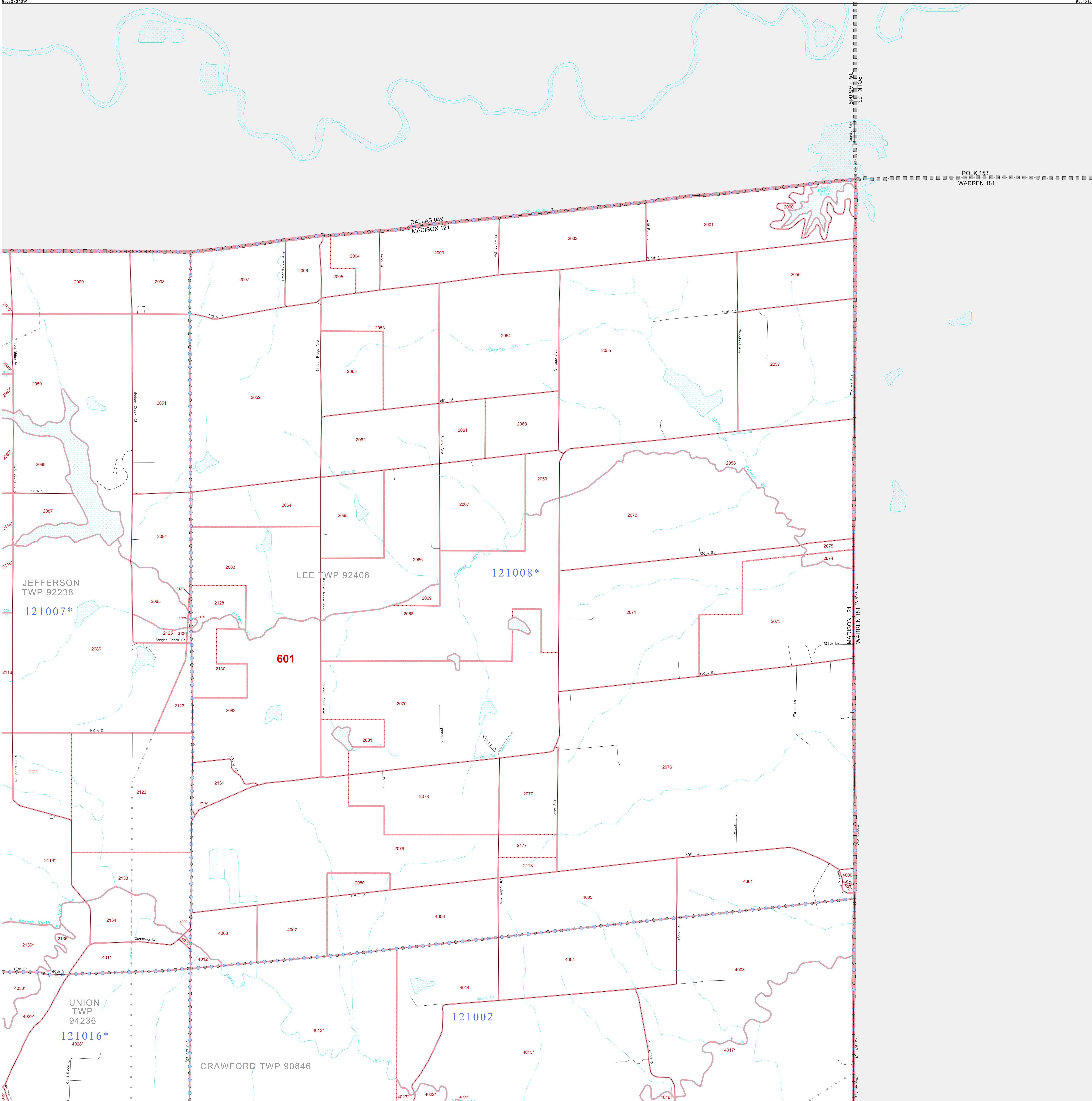


All legal boundaries and names are as of January 1, 2000. The boundaries shown on this map are for Census Bureau statistical data collection and tabulation purposes only; their depiction and designation for statistical purposes does not constitute a determination of jurisdictional authority or rights of ownership or entitlement. U.S. DEPARTMENT OF COMMERCE Economics and Statistics Administration U.S. Census Bureau

P. L. 94-171 COUNTY BLOCK MAP (CENSUS 2000)

41 533054N  
93 927343W

41 533054N  
93 751357W



**GEOGRAPHIC AREAS LEGEND**

SYMBOL	NAME STYLE
*****	INTERNATIONAL
*****	AIR (FEDERAL)
*****	Trust Land
*****	STATE
*****	COUNTY
*****	MINOR CIVIL DIV.
*****	Incorporated Place <sup>1</sup>
*****	Census Designated Place <sup>1</sup>
*****	Corporate Offset Boundary
*****	Voting District <sup>2</sup>
*****	Census Tract
*****	BLOCK <sup>3</sup>

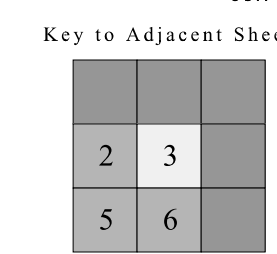
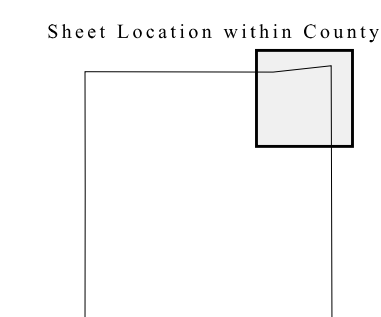
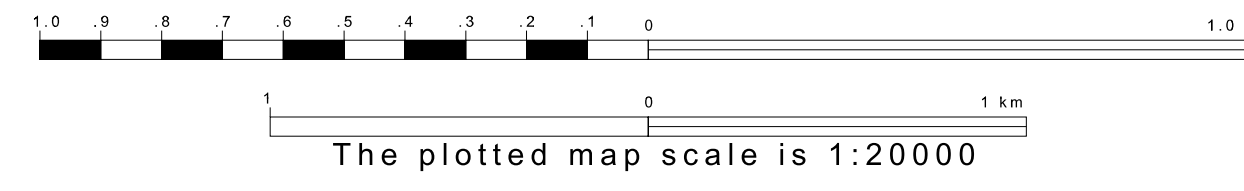
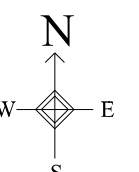
Military     Inset     Out Area

Abbreviation Reference: AIR = American Indian Reservation; Trust Land = Off-Reservation Trust Land

1 A "\*" following a place name indicates that the place is coterminous with a MCD. A "-" indicates that the place differs from the place name.  
 2 A "\*" following a VTD code indicates an actual voting district. Its absence indicates that the VTD is a pseudo voting district or no information is available as to its status.  
 3 A "\*" following a block number indicates that the block number is repeated elsewhere in the block.

41 400404N  
93 927343W

41 400404N  
93 751357W



ST: Iowa (19)  
 COU: Madison (121)  
 SHEET 3 OF 9 PARENT SHEETS



All legal boundaries and names are as of January 1, 2000. The boundaries shown on this map are for Census Bureau statistical data collection and tabulation purposes only; their depiction and designation for statistical purposes does not constitute a determination of jurisdictional authority or rights of ownership or entitlement. U.S. DEPARTMENT OF COMMERCE Economics and Statistics Administration U.S. Census Bureau

P. L. 94-171 COUNTY BLOCK MAP (CENSUS 2000)

41 400404N  
94 279316W

41 400404N  
94 103320W

GEOGRAPHIC AREAS LEGEND

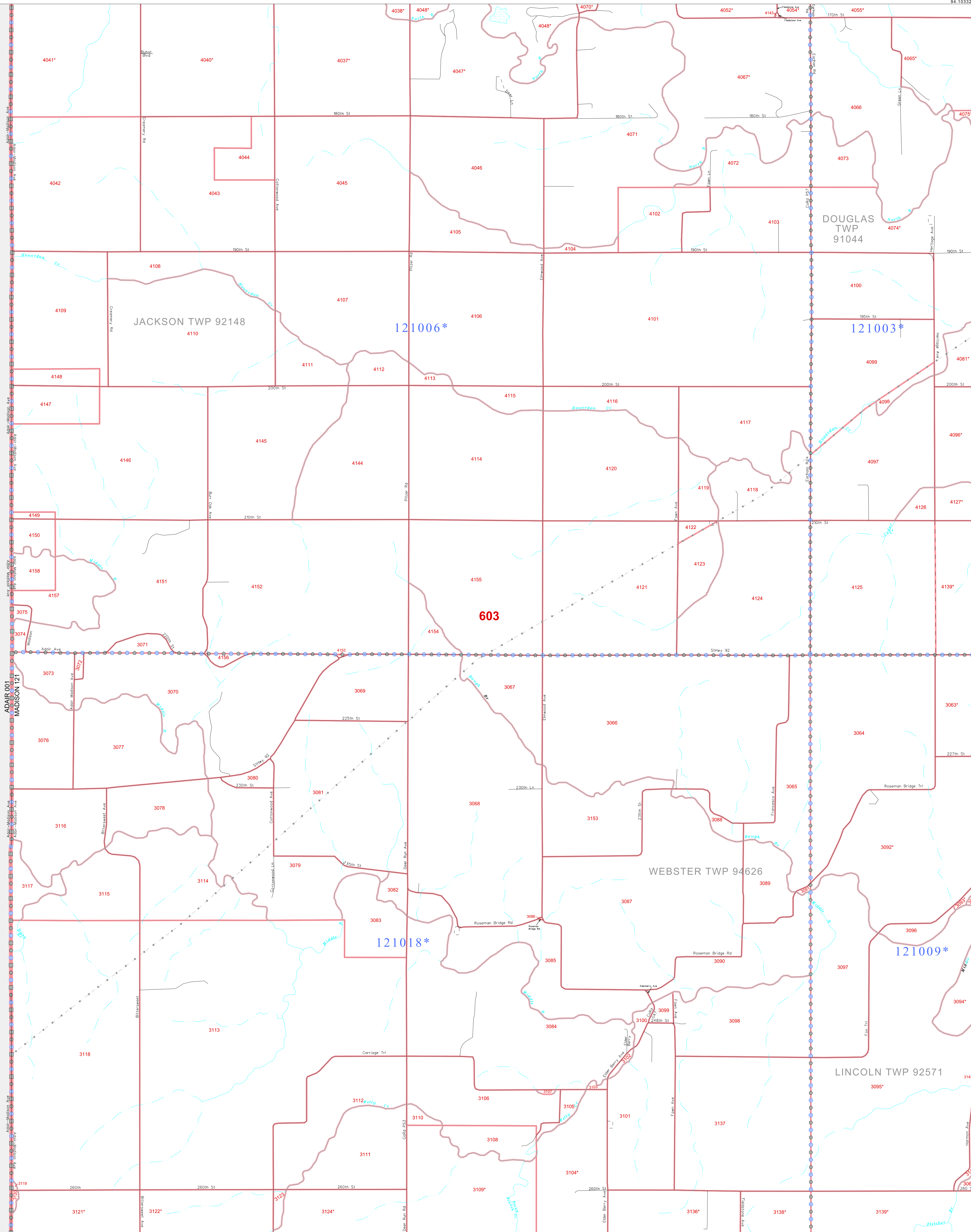
SYMBOL	NAME STYLE
*****	INTERNATIONAL
*****	AIR (FEDERAL)
*****	Trust Land
*****	STATE
*****	COUNTY
*****	MINOR CIVIL DIV.
*****	Incorporated Place*
*****	Census Designated Place*
*****	Corporate Offset Boundary
*****	Voting District*
*****	Census Tract
*****	BLOCK*

Abbreviation Reference: AIR = American Indian Reservation; Trust Land = Off-Reservation Trust Land

1 A "\*" following a place name indicates that the place is coextensive with a MCD. A "\*" indicates that the place differs from the place name.

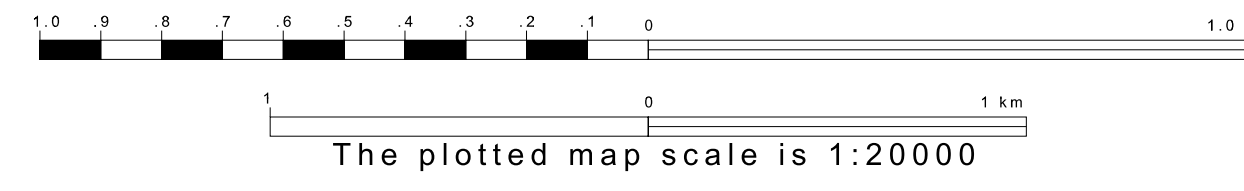
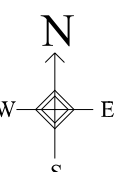
2 A "\*" following a VTD code indicates an actual voting district. Its absence indicates that the VTD is a pseudo voting district or no information is available as to its status.

3 A "\*" following a block number indicates that the block number is repeated elsewhere in the block.

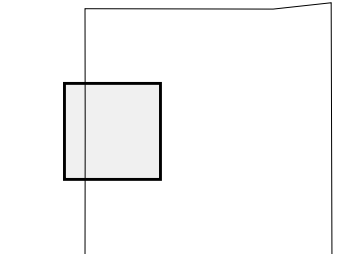


41 267753N  
94 279316W

41 267753N  
94 103320W



Sheet Location within County



Key to Adjacent Sheets

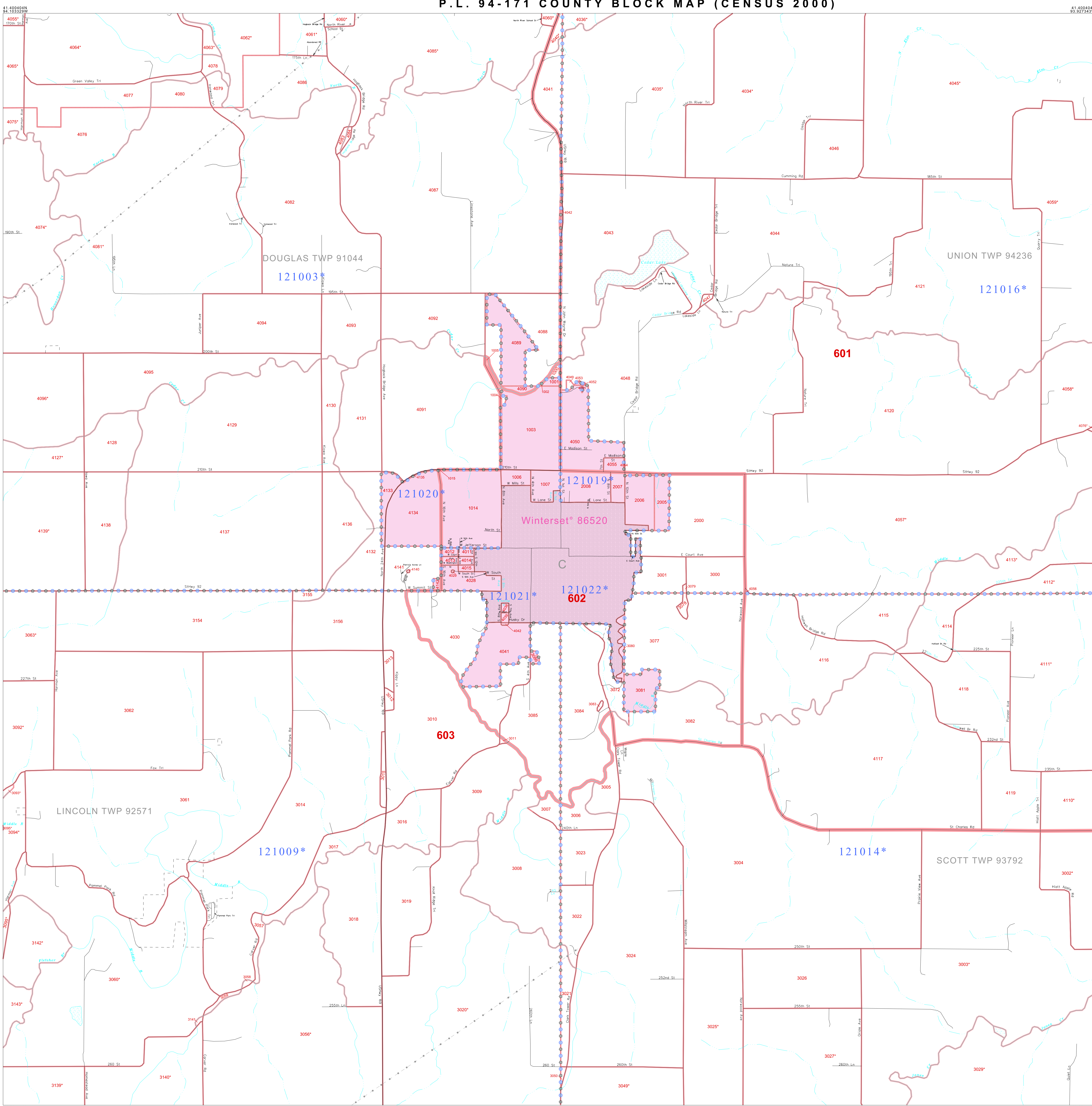
1	2
4	5
7	8

ST: Iowa (19)  
COU: Madison (121)  
SHEET 4 OF 9 PARENT SHEETS



All legal boundaries and names are as of January 1, 2000. The boundaries shown on this map are for Census Bureau statistical data collection and tabulation purposes only; their depiction and designation for statistical purposes does not constitute a determination of jurisdictional authority or rights of ownership or entitlement. U.S. DEPARTMENT OF COMMERCE Economics and Statistics Administration U.S. Census Bureau

P. L. 94-171 COUNTY BLOCK MAP (CENSUS 2000)



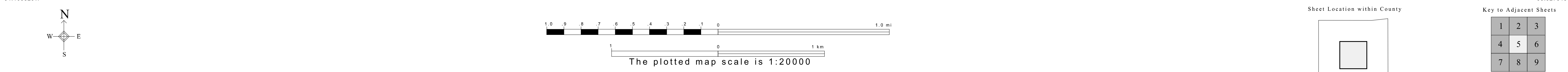
**GEOGRAPHIC AREAS LEGEND**

SYMBOL	NAME STYLE
*****	INTERNATIONAL
*****	AIR (FEDERAL)
*****	Trust Land
*****	STATE
*****	COUNTY
*****	MINOR CIVIL DIV.
*****	Incorporated Place*
*****	Census Designated Place*
*****	Corporate Offset Boundary
*****	Voting District*
*****	Census Tract
*****	BLOCK*

Military     Inset     Out Area

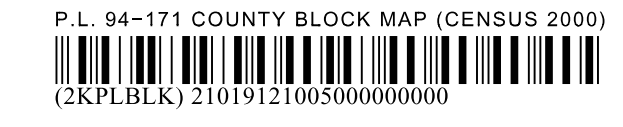
Abbreviation Reference: AIR = American Indian Reservation; Trust Land = Off-Reservation Trust Land

1 \* \* \* \* \* following a place name indicates that the place is coterminous with a MCD. A \* \* \* \* \* indicates that the place is also a false MCD. In both cases, the MCD name is shown only when it differs from the place name.  
 2 A \* \* \* \* \* following a VTD code indicates an actual voting district. Its absence indicates that the VTD is a pseudo voting district or no information is available as to its status.  
 3 A \* \* \* \* \* following a block number indicates that the block number is repeated elsewhere in the block.

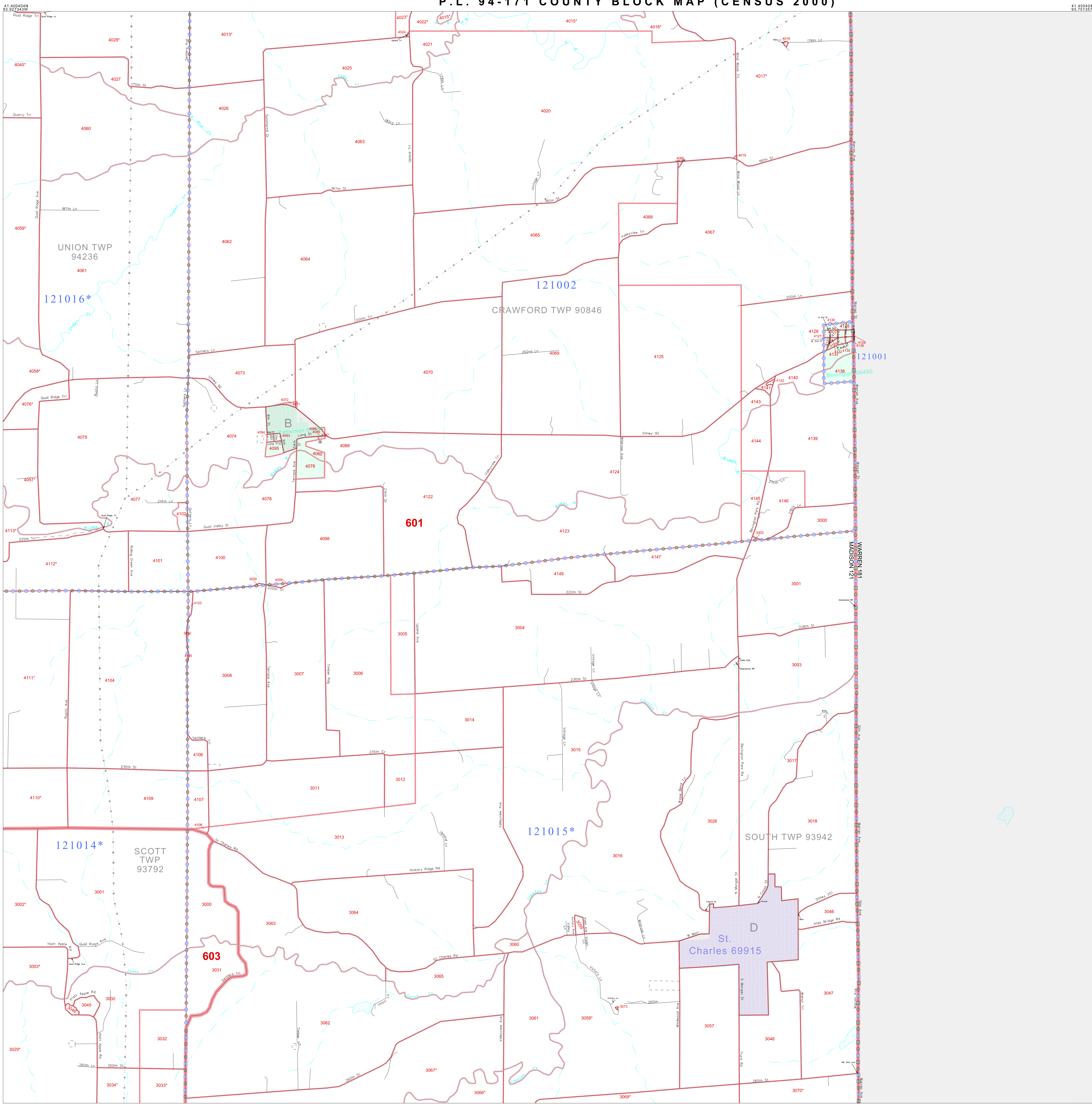


All legal boundaries and names are as of January 1, 2000. The boundaries shown on this map are for Census Bureau statistical data collection and tabulation purposes only; their depiction and designation for statistical purposes does not constitute a determination of jurisdictional authority or rights of ownership or entitlement. U.S. DEPARTMENT OF COMMERCE Economics and Statistics Administration U.S. Census Bureau

ST: Iowa (19)  
 COU: Madison (121)  
 SHEET 5 OF 9 PARENT SHEETS



P. L. 94-171 COUNTY BLOCK MAP (CENSUS 2000)



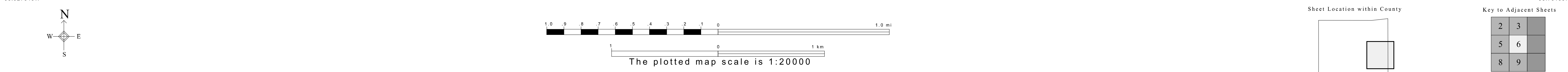
**GEOGRAPHIC AREAS LEGEND**

SYMBOL	NAME STYLE
*****	INTERNATIONAL
*****	AIR (FEDERAL)
*****	Trust Land
*****	STATE
*****	COUNTY
*****	MINOR CIVIL DIV.
*****	Incorporated Place <sup>1</sup>
*****	Census Designated Place <sup>2</sup>
*****	Corporate Offset Boundary
*****	Voting District <sup>3</sup>
*****	Census Tract
*****	BLOCK <sup>3</sup>

Military     Inset     Out Area

Abbreviation Reference: AIR = American Indian Reservation; Trust Land = Off-Reservation Trust Land

1 A "\*" following a place name indicates that the place is coterminous with a MCD. A "-" indicates that the place differs from the MCD. In both cases, the MCD name is shown only when it differs from the place name.  
 2 A "\*" following a CTD code indicates an actual voting district. Its absence indicates that the VTD is a pseudo voting district or no information is available as to its status.  
 3 A "\*" following a block number indicates that the block number is repeated elsewhere in the block.

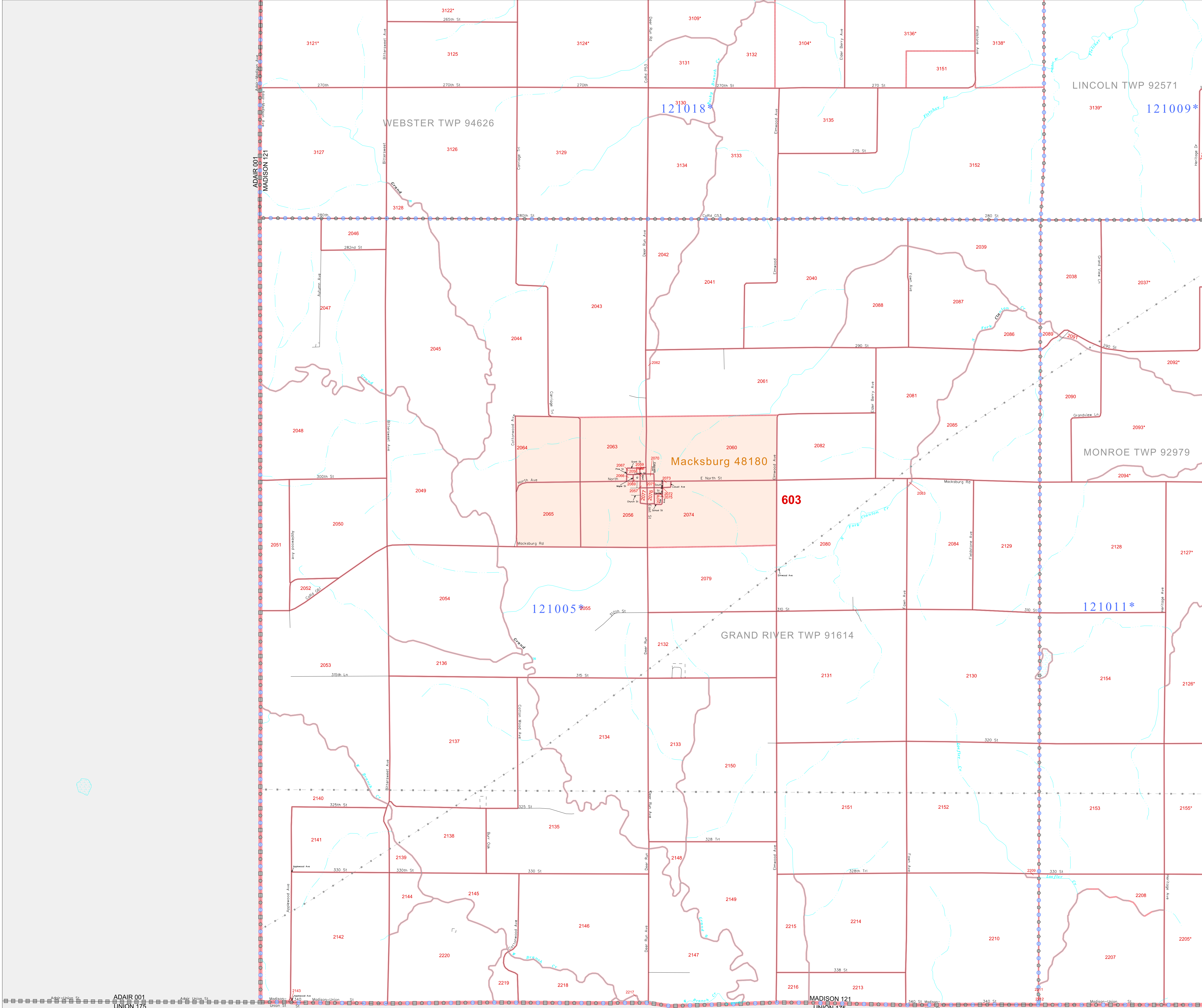




P. L. 94-171 COUNTY BLOCK MAP (CENSUS 2000)

41.267753N  
94.279316W

41.267753N  
94.103329W



**GEOGRAPHIC AREAS LEGEND**

SYMBOL	NAME STYLE
*****	INTERNATIONAL
*****	AIR (FEDERAL)
*****	Trust Land
*****	STATE
*****	COUNTY
*****	MINOR CIVIL DIV.
*****	Incorporated Place*
*****	Census Designated Place*
*****	Corporate Offset Boundary
*****	Voting District*
*****	Census Tract
*****	BLOCK*

Abbreviation Reference: AIR = American Indian Reservation; Trust Land = Gift/Preservation Trust Land

1 A \* \* following a place name indicates that the place is coterminous with a MCD. A \* indicates that the place is also a false MCD. In both cases, the MCD name is shown only when it differs from the place name.

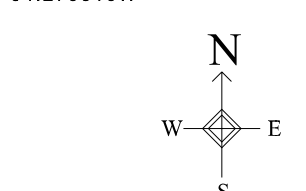
2 A \* \* following a VTD code indicates an actual voting district. Its absence indicates that the VTD is a pseudo voting district or no information is available as to its status.

3 A \* \* following a block number indicates that the block number is repeated elsewhere in the block.

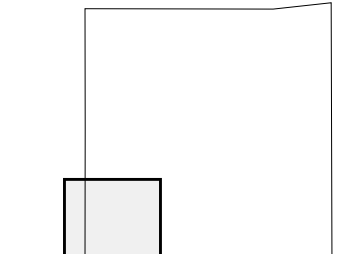
Inset    Out Area

ADAIR 001  
UNION 175

MADISON 121  
UNION 175



Sheet Location within County



Key to Adjacent Sheets



ST: Iowa (19)  
COU: Madison (121)  
SHEET 7 OF 9 PARENT SHEETS

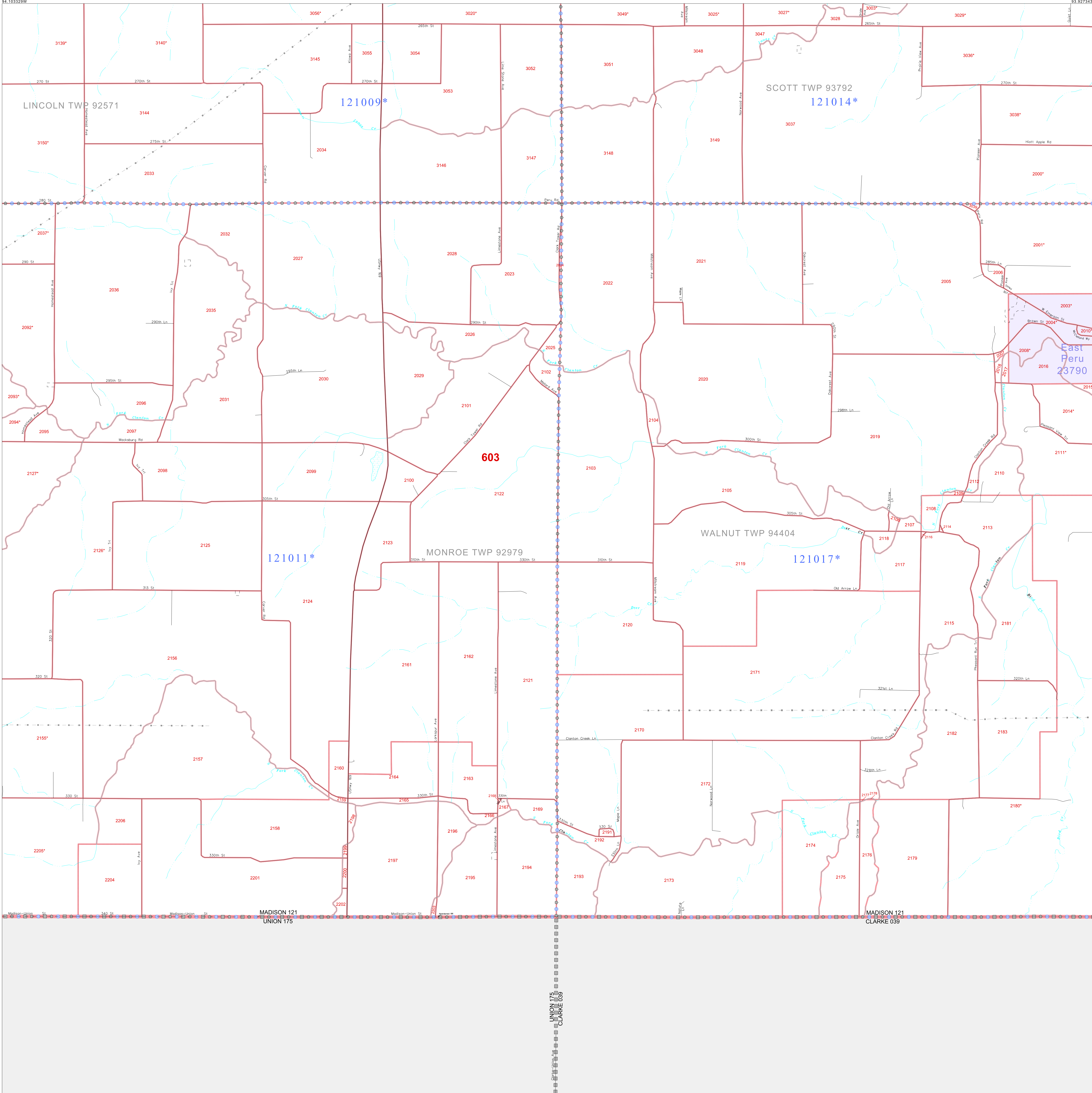
All legal boundaries and names are as of January 1, 2000. The boundaries shown on this map are for Census Bureau statistical data collection and tabulation purposes only; their depiction and designation for statistical purposes does not constitute a determination of jurisdictional authority or rights of ownership or entitlement. U.S. DEPARTMENT OF COMMERCE Economics and Statistics Administration U.S. Census Bureau



P. L. 94-171 COUNTY BLOCK MAP (CENSUS 2000)

41.267753N  
94.103329W

41.267753N  
93.927343W



**GEOGRAPHIC AREAS LEGEND**

SYMBOL	NAME STYLE
*****	<b>INTERNATIONAL</b>
*****	<b>AIR (FEDERAL)</b>
*****	<b>Trust Land</b>
*****	<b>STATE</b>
*****	<b>COUNTY</b>
*****	<b>MINOR CIVIL DIV.</b>
*****	<b>Incorporated Place<sup>1</sup></b>
*****	<b>Census Designated Place<sup>2</sup></b>
*****	<b>Corporate Offset Boundary</b>
*****	<b>Voting District<sup>3</sup></b>
*****	<b>Census Tract</b>
*****	<b>BLOCK<sup>3</sup></b>

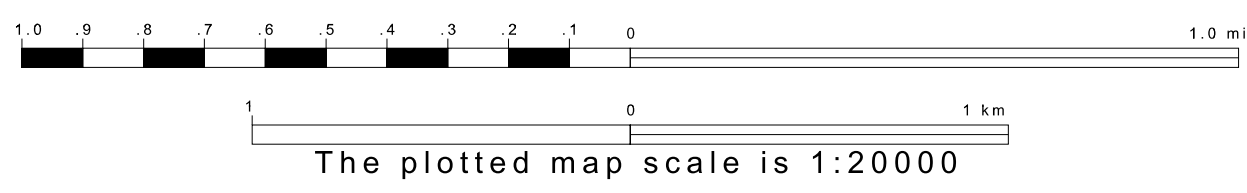
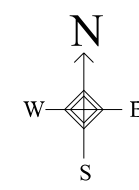
Military     Inset     Out Area

Abbreviation Reference: AIR = American Indian Reservation; Trust Land = Off-Reservation Trust Land

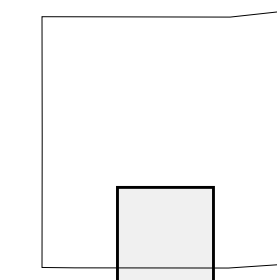
1 A "\*" following a place name indicates that the place is coterminous with a MCD. A "-" indicates that the place is also a false MCD. In both cases, the MCD name is shown only when it differs from the place name.  
 2 A "\*" following a CDP name indicates an actual voting district. Its absence indicates that the VTD is a pseudo voting district or no information is available as to its status.  
 3 A "\*" following a block number indicates that the block number is repeated elsewhere in the block.

41.135103N  
94.103329W

41.135103N  
93.927343W



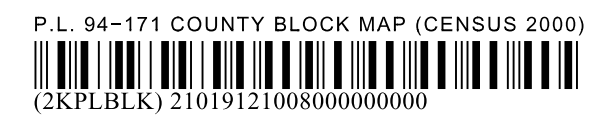
Sheet Location within County



Key to Adjacent Sheets



ST: Iowa (19)  
COU: Madison (121)  
SHEET 8 OF 9 PARENT SHEETS

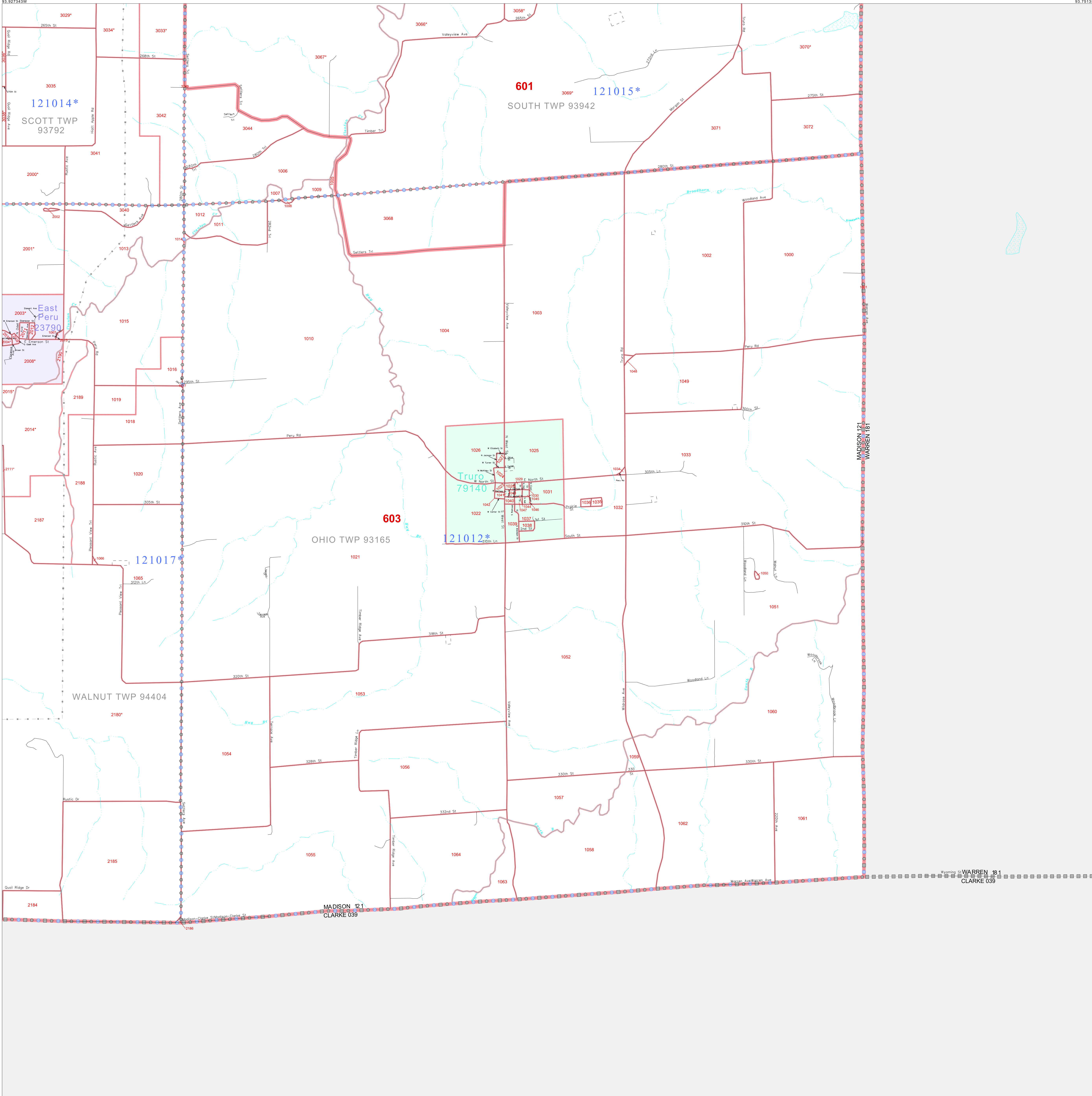


All legal boundaries and names are as of January 1, 2000. The boundaries shown on this map are for Census Bureau statistical data collection and tabulation purposes only; their depiction and designation for statistical purposes does not constitute a determination of jurisdictional authority or rights of ownership or entitlement. U.S. DEPARTMENT OF COMMERCE Economics and Statistics Administration U.S. Census Bureau

P. L. 94-171 COUNTY BLOCK MAP (CENSUS 2000)

41 267753N  
93.927343W

41 267753N  
93.751367W



**GEOGRAPHIC AREAS LEGEND**

SYMBOL	NAME STYLE
*****	INTERNATIONAL
*****	AIR (FEDERAL)
*****	Trust Land
*****	STATE
*****	COUNTY
*****	MINOR CIVIL DIV.
*****	Incorporated Place <sup>1</sup>
*****	Census Designated Place <sup>1</sup>
*****	Corporate Offset Boundary
*****	Voting District <sup>2</sup>
*****	Census Tract
*****	BLOCK <sup>3</sup>

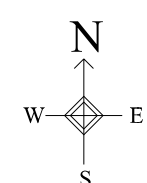
Military     Inset     Out Area

Abbreviation Reference: AIR = American Indian Reservation; Trust Land = Off-Reservation Trust Land

1 A "\*" following a place name indicates that the place is coterminous with a MCD. A "-" indicates that the place is also a false MCD. In both cases, the MCD name is shown only when it differs from the place name.  
 2 A "\*" following a VTD code indicates an actual voting district. Its absence indicates that the VTD is a pseudo voting district or no information is available as to its status.  
 3 A "\*" following a block number indicates that the block number is repeated elsewhere in the block.

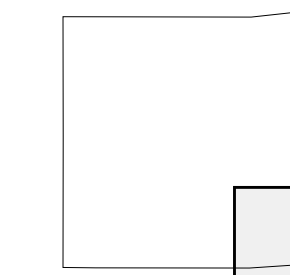
41 135103N  
93.927343W

41 135103N  
93.751367W



The plotted map scale is 1:20000

Sheet Location within County



Key to Adjacent Sheets

5	6
8	9

ST: Iowa (19)  
COU: Madison (121)  
SHEET 9 OF 9 PARENT SHEETS



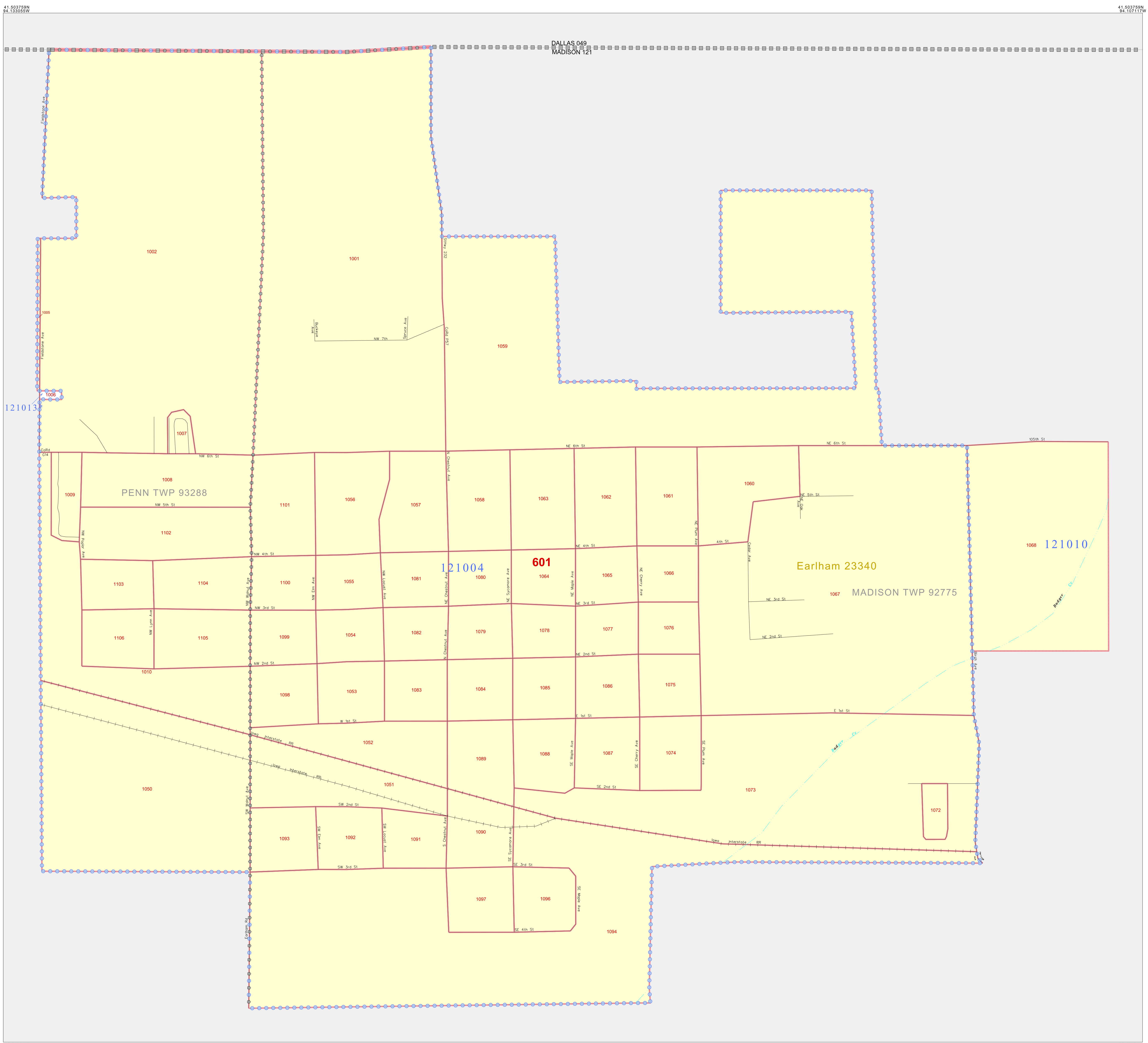
P. L. 94-171 COUNTY BLOCK MAP (CENSUS 2000)

GEOGRAPHIC AREAS LEGEND

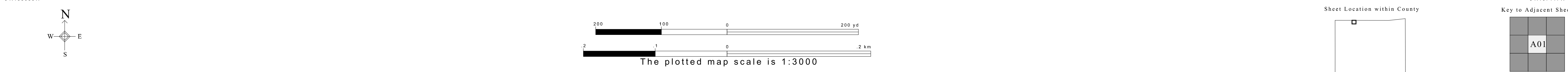
SYMBOL	NAME STYLE
*****	INTERNATIONAL
*****	AIR (FEDERAL)
*****	Trust Land
//////	STATE
■■■■■	COUNTY
○○○○○	MINOR CIVIL DIV.
■■■■■	Incorporated Place <sup>1</sup>
■■■■■	Census Designated Place <sup>1</sup>
.....	Corporate Offset Boundary
.....	Voting District <sup>2</sup>
———	Census Tract
———	BLOCK <sup>3</sup>

Abbreviation Reference: AIR - American Indian Reservation; Trust Land - Oil/Conservation Trust Land

- 1 A " " following a place name indicates that the place is coterminous with a MCD. A " " indicates that the place differs from the place name.
- 2 A " " following a VTD code indicates an actual voting district. Its absence indicates that the VTD is a pseudo voting district or no information is available as to its status.
- 3 A " " following a block number indicates that the block number is repeated elsewhere in the block.



Inset Out Area



P. L. 94-171 COUNTY BLOCK MAP (CENSUS 2000)

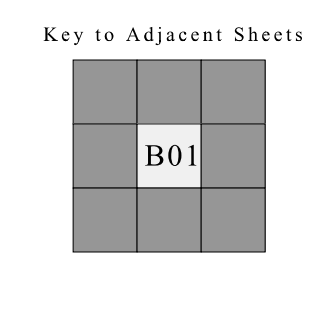
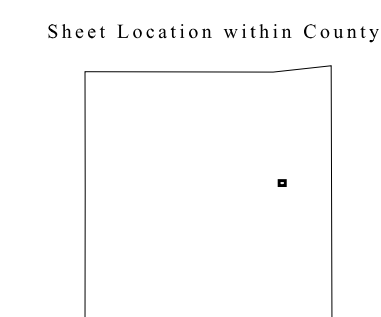
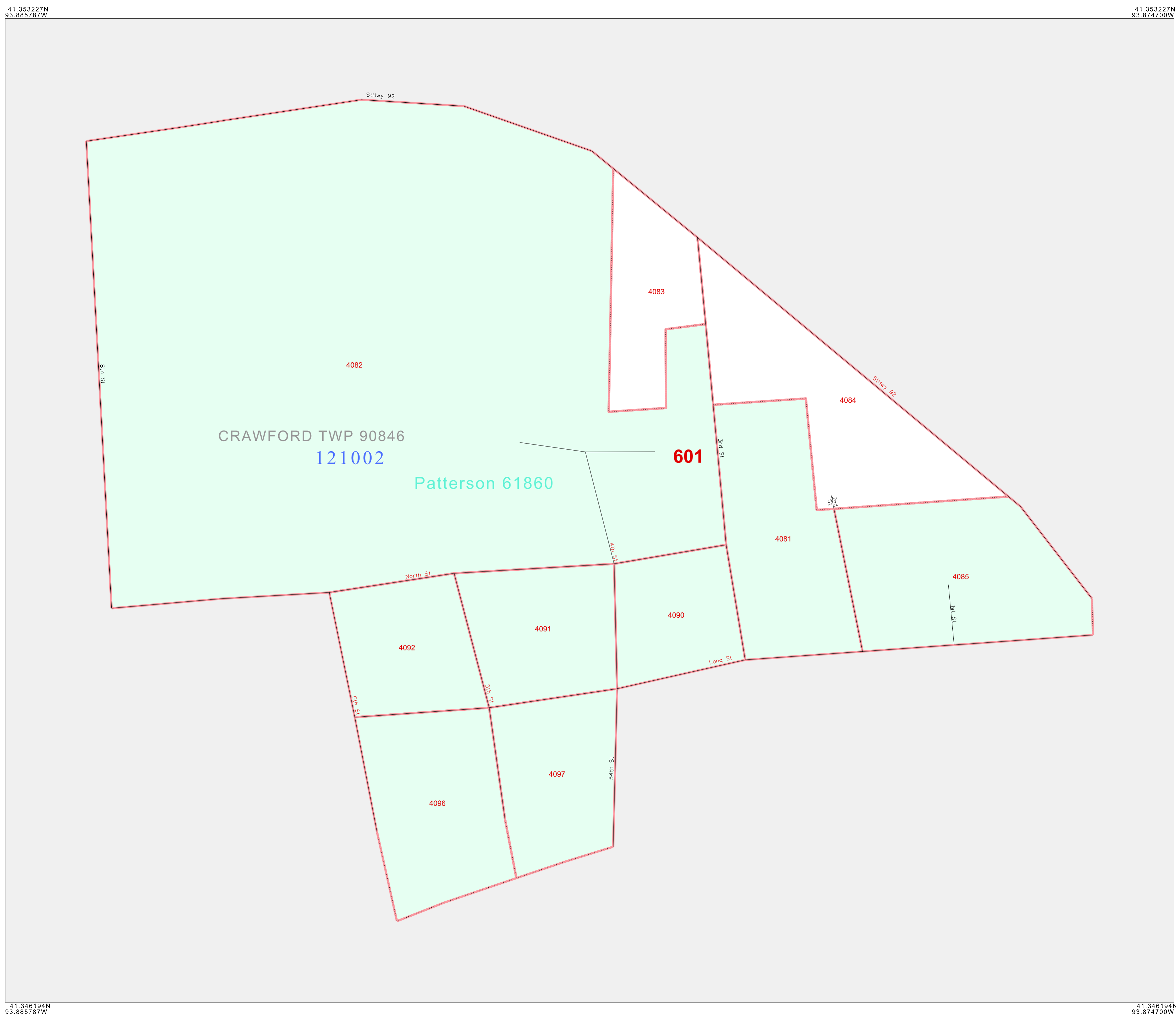
**GEOGRAPHIC AREAS LEGEND**

SYMBOL	NAME STYLE
*****	INTERNATIONAL
*****	AIR (FEDERAL)
*****	Trust Land
///////	STATE
	COUNTY
○○○○○	MINOR CIVIL DIV. <sup>1</sup>
■■■■■	Incorporated Place <sup>1</sup>
■■■■■	Census Designated Place <sup>1</sup>
.....	Corporate Offset Boundary
●●●●●	Voting District <sup>2</sup>
————	Census Tract
————	BLOCK <sup>3</sup>

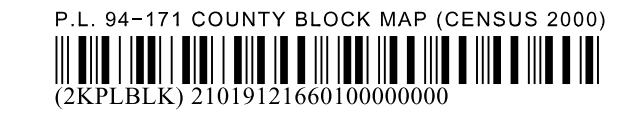
Military  Inset  Out Area

Abbreviation Reference: AIR = American Indian Reservation; Trust Land = Off-Reservation Trust Land

1 A "\*" following a place name indicates that the place is coterminous with a MCD. A "-" indicates that the place differs from the place name.  
 2 A "\*" following a VTD code indicates an actual voting district. Its absence indicates that the VTD is a pseudo voting district or no information is available as to its status.  
 3 A "\*" following a block number indicates that the block number is repeated elsewhere in the block.



ST: Iowa (19)  
 COU: Madison (121)  
 INSET SHEET B01



All legal boundaries and names are as of January 1, 2000. The boundaries shown on this map are for Census Bureau statistical data collection and tabulation purposes only; their depiction and designation for statistical purposes does not constitute a determination of jurisdictional authority or rights of ownership or entitlement. U.S. DEPARTMENT OF COMMERCE Economics and Statistics Administration U.S. Census Bureau

P. L. 94-171 COUNTY BLOCK MAP (CENSUS 2000)

41 343628N  
94.028196W

41 343628N  
94.028196W

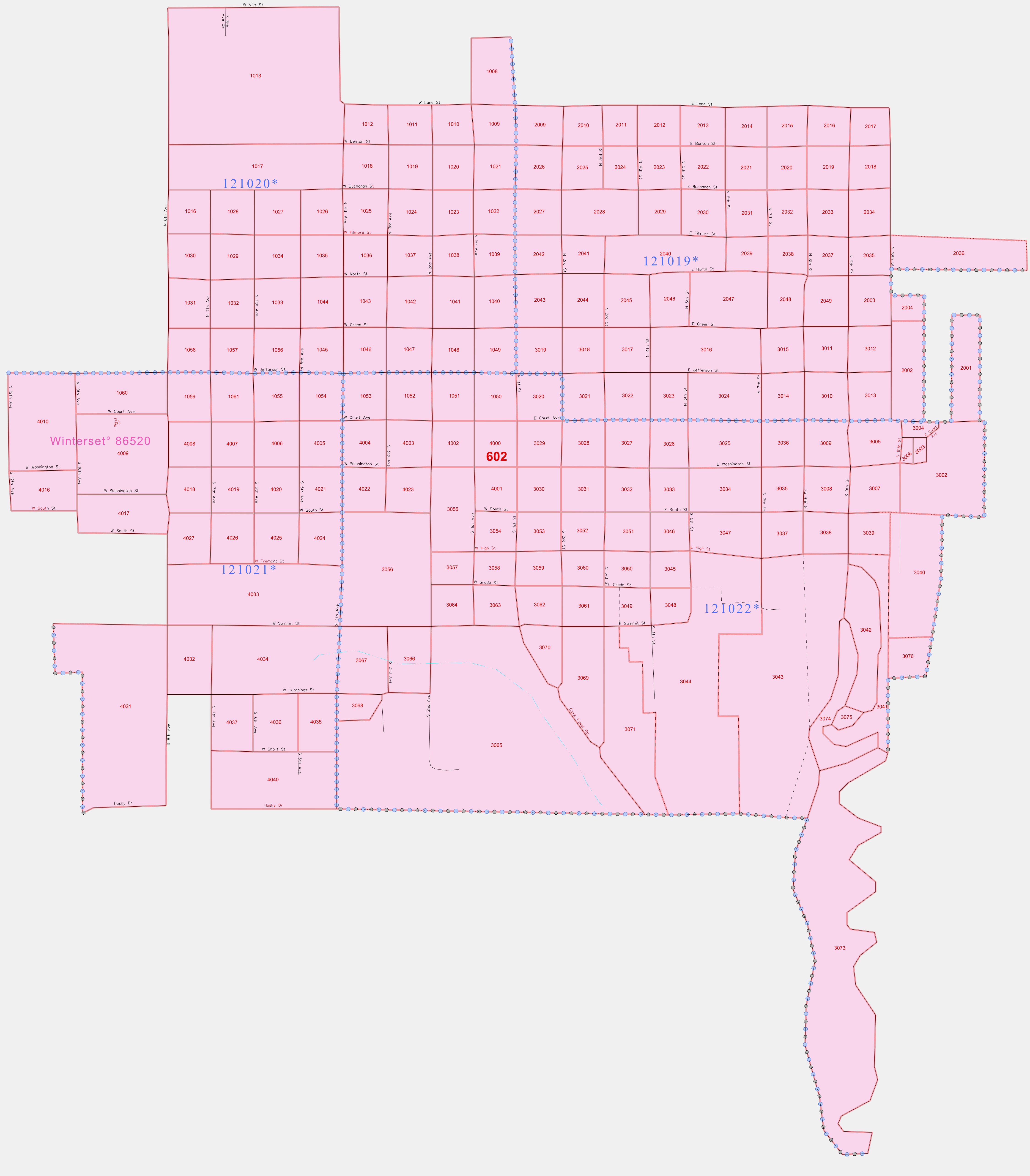
GEOGRAPHIC AREAS LEGEND

SYMBOL	NAME STYLE
*****	INTERNATIONAL
*****	AIR (FEDERAL)
*****	Trust Land
*****	STATE
*****	COUNTY
*****	MINOR CIVIL DIV. <sup>1</sup>
*****	Incorporated Place <sup>1</sup>
*****	Census Designated Place <sup>1</sup>
.....	Corporate Offset Boundary
.....	Voting District <sup>2</sup>
.....	Census Tract
.....	BLOCK <sup>3</sup>

Military Inset Out Area

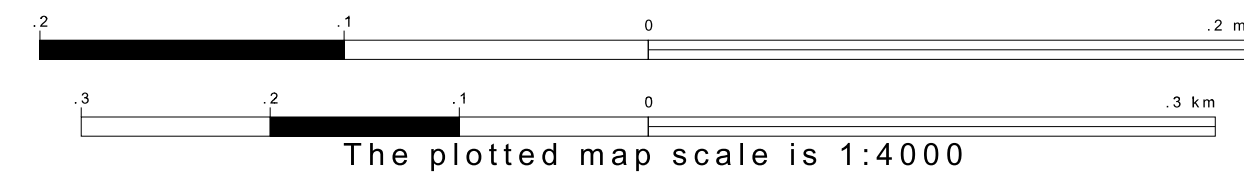
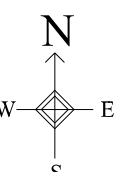
Abbreviation Reference: AIR = American Indian Reservation; Trust Land = Off-Reservation Trust Land

1 A "\*" following a place name indicates that the place is coterminous with a MCD. A "-" indicates that the place differs from the place name.  
 2 A "\*" following a VTD code indicates an actual voting district. Its absence indicates that the VTD is a pseudo voting district or no information is available as to its status.  
 3 A "\*" following a block number indicates that the block number is repeated elsewhere in the block.

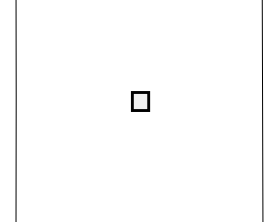


41 318533N  
94.028196W

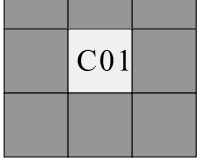
41 318533N  
94.028196W



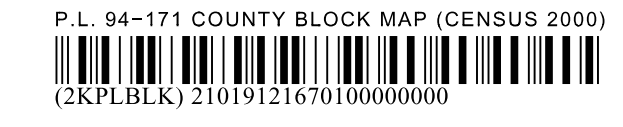
Sheet Location within County



Key to Adjacent Sheets



ST: Iowa (19)  
 COU: Madison (121)  
 INSET SHEET C01



All legal boundaries and names are as of January 1, 2000. The boundaries shown on this map are for Census Bureau statistical data collection and tabulation purposes only; their depiction and designation for statistical purposes does not constitute a determination of jurisdictional authority or rights of ownership or entitlement. U.S. DEPARTMENT OF COMMERCE Economics and Statistics Administration U.S. Census Bureau

P. L. 94-171 COUNTY BLOCK MAP (CENSUS 2000)

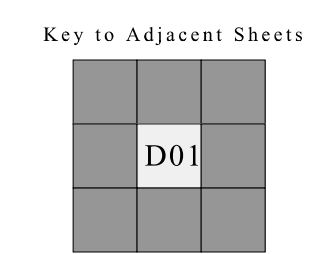
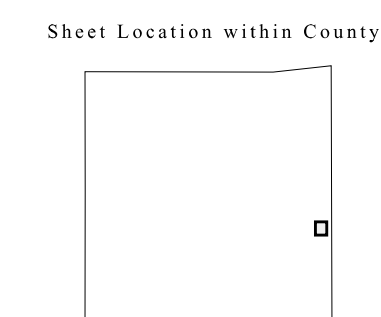
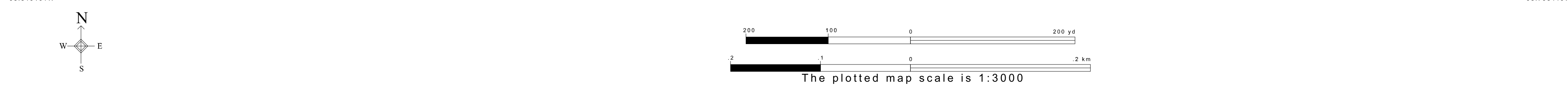
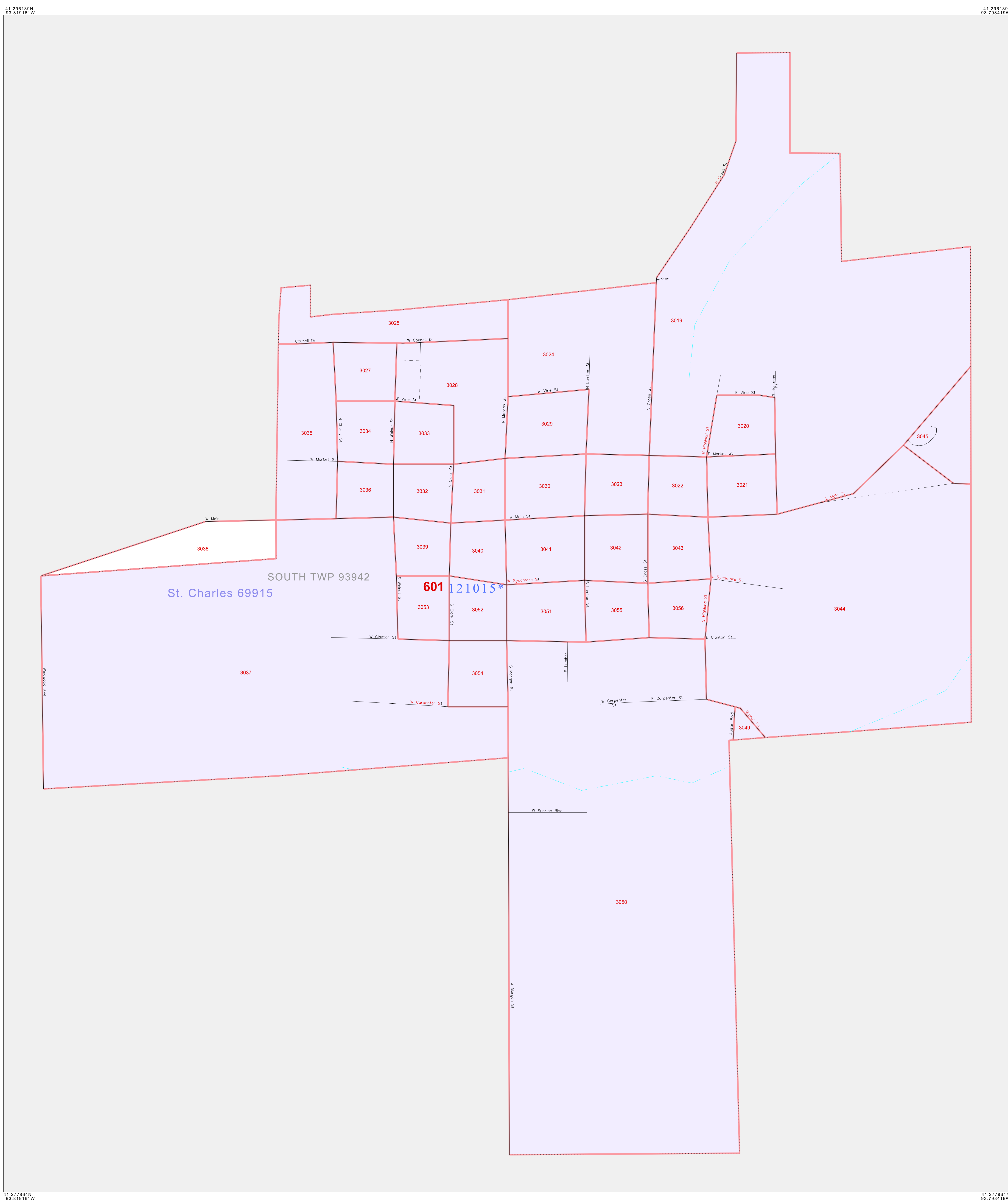
**GEOGRAPHIC AREAS LEGEND**

SYMBOL	NAME STYLE
*****	INTERNATIONAL
*****	AIR (FEDERAL)
*****	Trust Land
///////	STATE
	COUNTY
○○○○○	MINOR CIVIL DIV. <sup>1</sup>
■■■■■	Incorporated Place <sup>1</sup>
■■■■■	Census Designated Place <sup>1</sup>
.....	Corporate Offset Boundary
.....	Voting District <sup>2</sup>
.....	Census Tract
.....	BLOCK <sup>3</sup>

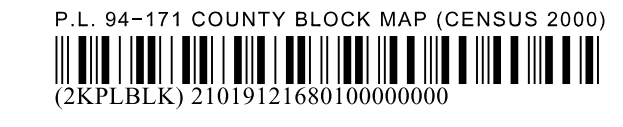
Military  Inset  Out Area

Abbreviation Reference: AIR = American Indian Reservation; Trust Land = Off-Reservation Trust Land

1 A "\*" following a place name indicates that the place is coterminous with a MCD. A "-" indicates that the place differs from the MCD. In both cases, the MCD name is shown only when it differs from the place name.  
 2 A "\*" following a VTD code indicates an actual voting district. Its absence indicates that the VTD is a pseudo voting district or no information is available as to its status.  
 3 A "\*" following a block number indicates that the block number is repeated elsewhere in the block.



ST: Iowa (19)  
 COU: Madison (121)  
 INSET SHEET D01



All legal boundaries and names are as of January 1, 2000. The boundaries shown on this map are for Census Bureau statistical data collection and tabulation purposes only; their depiction and designation for statistical purposes does not constitute a determination of jurisdictional authority or rights of ownership or entitlement. U.S. DEPARTMENT OF COMMERCE Economics and Statistics Administration U.S. Census Bureau