

INDEX FOR P.L. 94-171 COUNTY BLOCK MAP (CENSUS 2000)

INDEX MAP LEGEND

SYMBOL	NAME STYLE
*****	INTERNATIONAL
-----	AIR (FEDERAL)
-----	Trust Land/HLL
-----	OTSA/ANVSA/TDSA
-----	TRIBAL SUBDIVISION
-----	AIR (State)
-----	SDA/SA
-----	ANRC
#####	STATE
####	COUNTY
○○○○○○	MINOR CIVIL DIV.¹
○○○○○○	Consolidated City
□□□□	Incorporated Place¹
□□□□	Census Designated Place¹
Inset	Inset Area
Out Area	Out Area

Abbreviation Reference: AIR = American Indian Reservation; Trust Land = Off-Reservation Trust Land; ANRC = Alaska Native Regional Corporation; TDSA = Tribal Designated Statistical Area; Tribal Subdivision = American Indian Tribal Subdivision; SDA/SA = State Designated American Indian Statistical Area; ANRC = Alaska Native Regional Corporation

¹ A " " following a place name indicates that the place is coterminous with a MCD. A " " indicates that the place is also a false MCD. In both cases, the MCD name is shown only when it differs from the place name.

P.L. 94-171 COUNTY BLOCK MAP LEGEND (CENSUS 2000)

SYMBOL DESCRIPTION	SYMBOL	NAME STYLE
International	*****	CANADA
American Indian Reservation (Federal)	*****	L'ANSE RES (1880)
Off-Reservation Trust Land, Hawaiian Home Land	*****	T1880
Oklahoma Tribal Statistical Area, Alaska Native Village Statistical Area, Tribal Designated Statistical Area	*****	KAW OTSA (5340)
American Indian Tribal Subdivision	*****	SHONTO (620)
American Indian Reservation (State)	*****	Tama Res (4125)
State Designated American Indian Statistical Area	*****	Lumbee (9815)
Alaska Native Regional Corporation	*****	NANA ANRC 52120
State or Statistically Equivalent Entity	#####	NEW YORK 36
County or Statistically Equivalent Entity	####	ERIE 029
Minor Civil Division (MCD)¹	○○○○○○	PIKE TWP 59742
Census County Division (CCD)	○○○○○○	KULA CCD 91890
Consolidated City	○○○○○○	Milford 47500
Incorporated Place¹	□□□□	Rome 63418
Census Designated Place (CDP)¹	□□□□	Zena 84187
Corporate Offset Boundary	-----	
Voting District (VTD)²	●●●●●●	023*
Census Tract	-----	5702.01
Block³	-----	1320

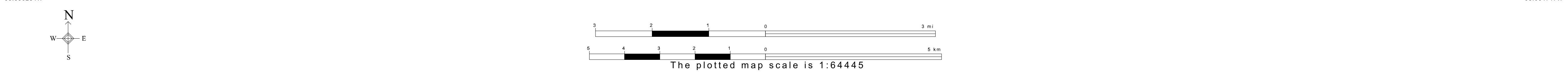
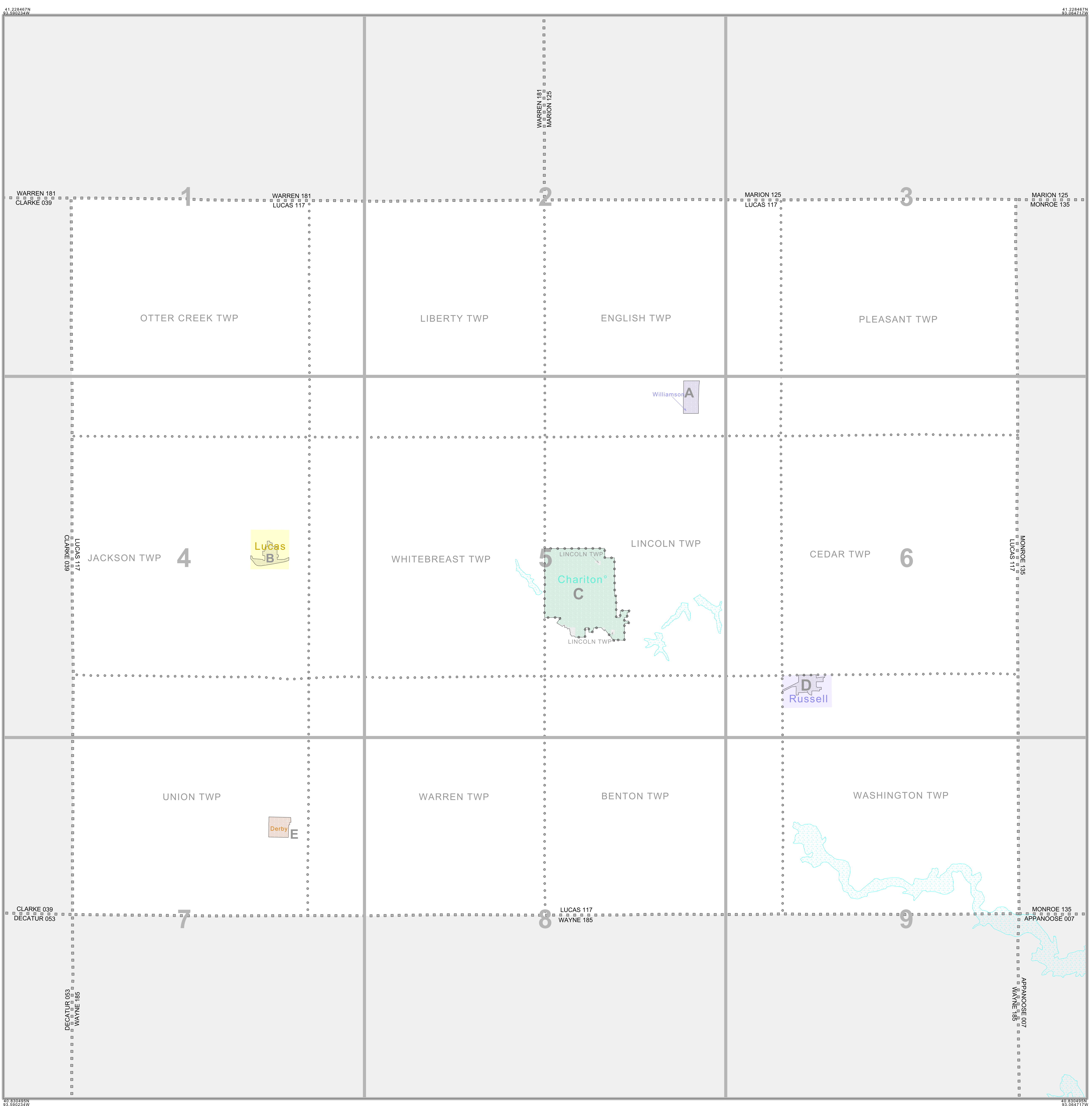
FEATURE	SYMBOL	FEATURE	SYMBOL
Interstate or Other Highway	-----	Perennial Stream or Shoreline	~~~~~
Secondary Road	-----	Intermittent Stream or Shoreline	~~~~~
Jeep Trail, Walkway, Stairway, or Ferry	-----	Large River or Lake	~~~~~
Railroad	-----	Glacier	~~~~~
Pipelining or Power Line	-----	Military Installation	~~~~~
Ridge, Fence, or Other Physical Feature	-----	Inset Area	Inset
Property Line or Fence Line	-----	Outside Subject Area	Out Area
Nonvisible Boundary or Feature Not Elsewhere Classified	-----		

Where international, state, and/or county boundaries coincide, the map shows the boundary symbol for only the highest-ranking of these boundaries.

¹ A " " following a place name indicates that the place is coterminous with a MCD. A " " following an incorporated place name indicates that the place is also a false MCD. In both cases, the MCD name is shown only when it differs from the place name.

² A " " following a VTD code indicates an actual voting district. Its absence indicates that the VTD is a pseudo voting district or no information is available as to its status.

³ A " " following a block number indicates that the block number is repeated elsewhere in the block.



All legal boundaries and names are as of January 1, 2000. The boundaries shown on this map are for Census Bureau statistical data collection and tabulation purposes only; their depiction and designation for statistical purposes does not constitute a determination of jurisdictional authority or rights of ownership or entitlement. U.S. DEPARTMENT OF COMMERCE Economics and Statistics Administration U.S. Census Bureau

ST: Iowa (19)
 COU: Lucas (117)
 INDEX MAP (TOTAL PARENT SHEETS 9 TOTAL INSET SHEETS 5)



P.L. 94-171 COUNTY BLOCK MAP LEGEND (CENSUS 2000)

<u>SYMBOL DESCRIPTION</u>	<u>SYMBOL</u>	<u>NAME STYLE</u>
International	☆☆☆☆☆☆	CANADA
American Indian Reservation (Federal)	☆☆☆☆☆☆	L'ANSE RES (1880)
Off-Reservation Trust Land, Hawaiian Home Land	☆☆☆☆☆☆	T1880
Oklahoma Tribal Statistical Area, Alaska Native Village Statistical Area, Tribal Designated Statistical Area	◆◆◆◆◆◆◆	KAW OTSA (5340)
American Indian Tribal Subdivision	◆◆◆◆◆◆◆	SHONTO (620)
American Indian Reservation (State)	// // // // // //	Tama Res (4125)
State Designated American Indian Statistical Area	◇◇◇◇◇◇◇	Lumbee (9815)
Alaska Native Regional Corporation	▽ ▲ ▽ ▲ ▽ ▲ ▽	NANA ANRC 52120
State or Statistically Equivalent Entity	// // // // // //	NEW YORK 36
County or Statistically Equivalent Entity	■ ■ ■ ■ ■ ■ ■	ERIE 029
Minor Civil Division (MCD) ¹	⬢ ⬢ ⬢ ⬢ ⬢ ⬢ ⬢	PIKE TWP 59742
Census County Division (CCD)	⬢ ⬢ ⬢ ⬢ ⬢ ⬢ ⬢	KULA CCD 91890
Consolidated City	○ ○ ○ ○ ○ ○ ○	Milford 47500
Incorporated Place ¹		Rome 63418
Census Designated Place (CDP) ¹		Zena 84187
Corporate Offset Boundary	
Voting District (VTD) ²	● ● ● ● ● ● ●	023*
Census Tract		5702.01
Block ³		1326

<u>FEATURE</u>	<u>SYMBOL</u>	<u>FEATURE</u>	<u>SYMBOL</u>
Interstate or Other Highway		Perennial Stream or Shoreline	
Secondary Road		Intermittent Stream or Shoreline	
Jeep Trail, Walkway, Stairway, or Ferry		Large River or Lake	
Railroad		Glacier	
Pipeline or Power Line		Military Installation	
Ridge, Fence, or Other Physical Feature		Inset Area	
Property Line or Fence Line		Outside Subject Area	
Nonvisible Boundary or Feature Not Elsewhere Classified			

Where international, state, and/or county boundaries coincide, the map shows the boundary symbol for only the highest-ranking of these boundaries.

¹ A ' * ' following a place name indicates that the place is coextensive with a MCD. A ' ° ' following an incorporated place name indicates that the place is also a false MCD. In both cases, the MCD name is shown only when it differs from the place name.

² A ' * ' following a VTD code indicates an actual voting district. Its absence indicates that the VTD is a pseudo voting district or no information is available as to its status.

³ A ' * ' following a block number indicates that the block number is repeated elsewhere in the block.

P.L. 94-171 COUNTY BLOCK MAP (CENSUS 2000)

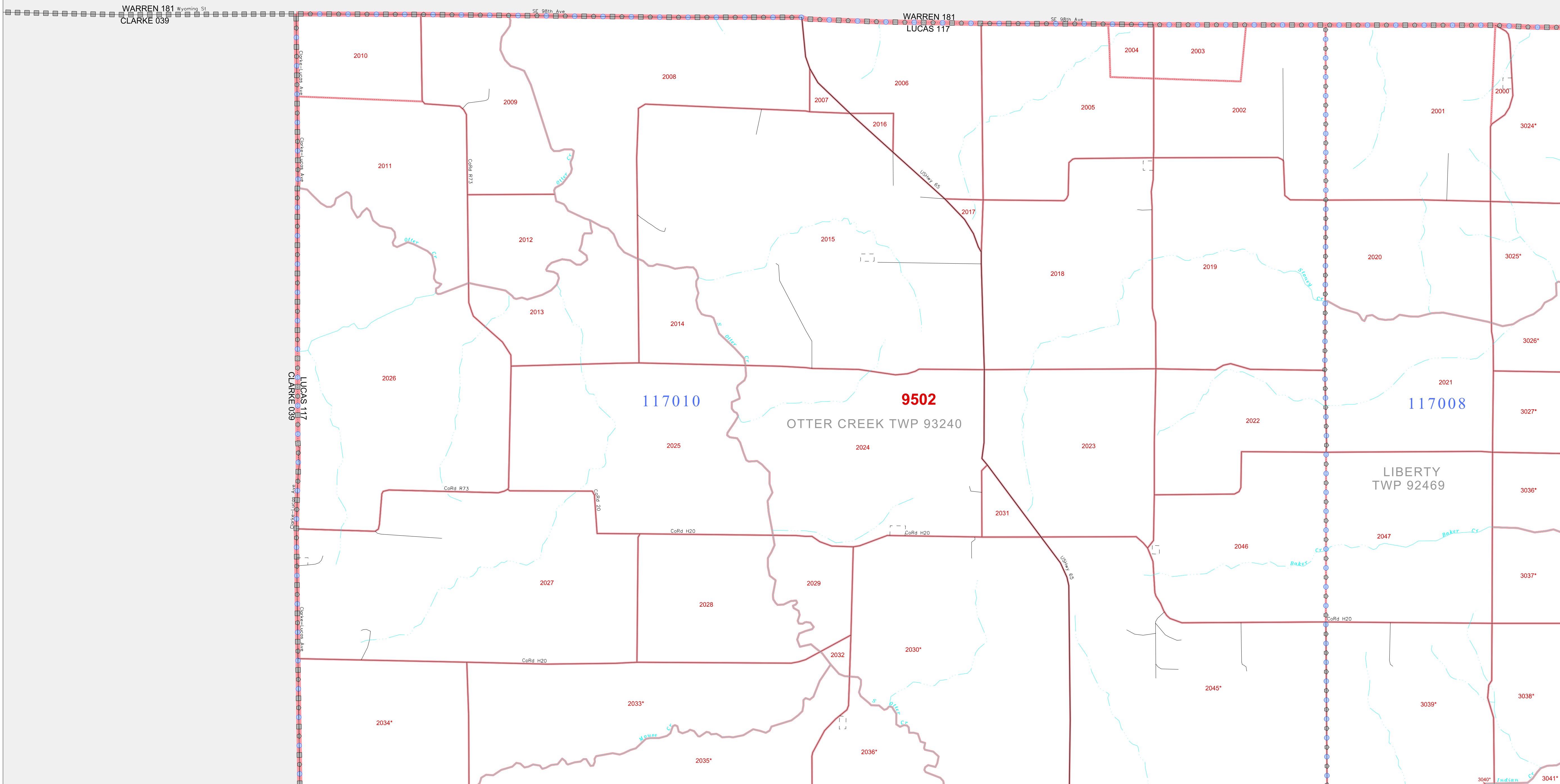
41 228468N
93 450234W

41 228468N
93 450234W

GEOGRAPHIC AREAS LEGEND

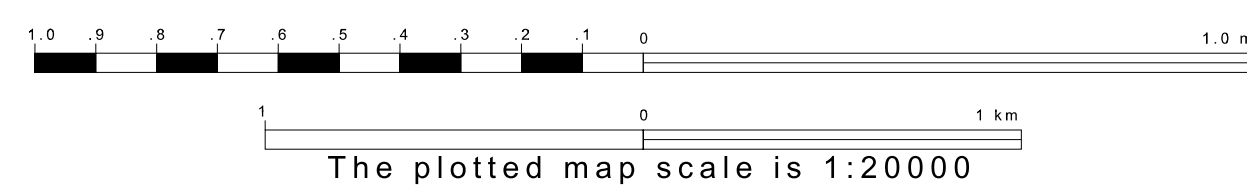
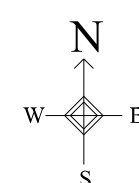
SYMBOL	NAME STYLE
*****	INTERNATIONAL
*****	AIR (FEDERAL)
*****	Trust Land
//////	STATE
	COUNTY
o-o-o-o	MINOR CIVIL DIV ¹
-----	Incorporated Place ¹
-----	Census Designated Place ¹
-----	Corporate Offset Boundary
.....	Voting District ²
-----	Census Tract
-----	BLOCK ³

Military Inset Out Area
 Abbreviation Reference: AIR = American Indian Reservation; Trust Land = Off-Reservation Trust Land
 1 A * * following a place name indicates that the place is consecutive with a MCD. A * * indicates that the place differs from the MCD. In both cases, the MCD name is shown only when it differs from the place name.
 2 A * * following a VTD code indicates an actual voting district. Its absence indicates that the VTD is a pseudo voting district or no information is available as to its status.
 3 A * * following a block number indicates that the block number is repeated elsewhere in the block.

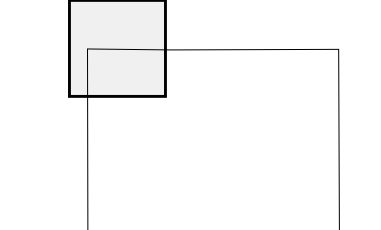


41 228468N
93 450234W

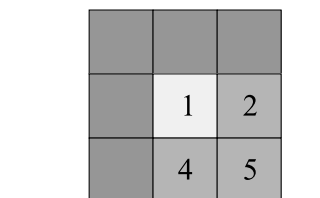
41 228468N
93 450234W



Sheet Location within County



Key to Adjacent Sheets



ST: Iowa (19)
COU: Lucas (117)
SHEET 1 OF 9 PARENT SHEETS



P. L. 94-171 COUNTY BLOCK MAP (CENSUS 2000)

41.228468N
93.415081W

41.228468N
93.239888W

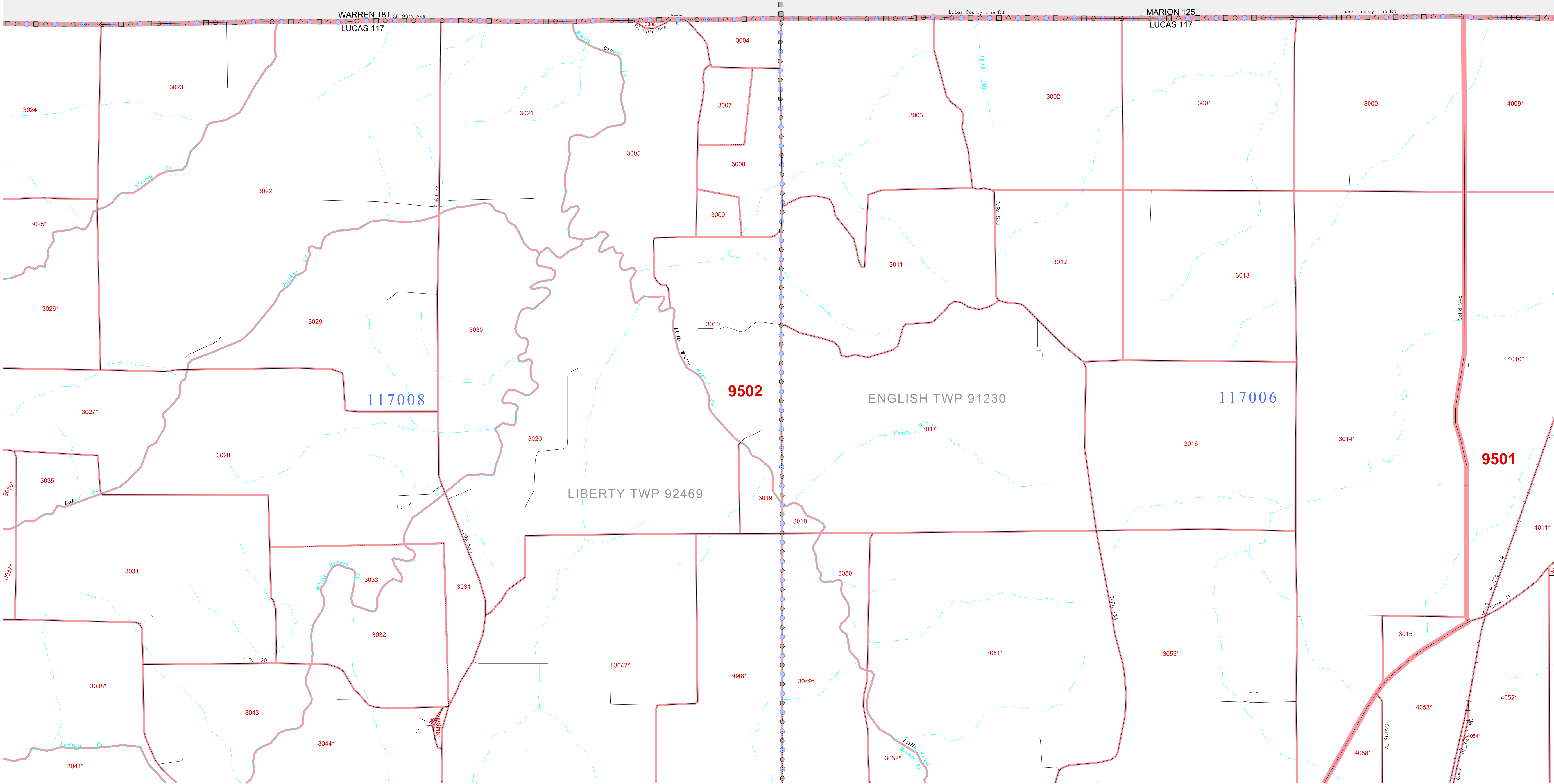
GEOGRAPHIC AREAS LEGEND

SYMBOL	NAME STYLE
*****	INTERNATIONAL
*****	AIR (FEDERAL)
*****	Trust Land
//////	STATE
	COUNTY
o-o-o-o	MINOR CIVIL DIV.
-----	Incorporated Place
-----	Census Designated Place
-----	Corporate Offset Boundary
.....	Voting District
-----	Census Tract
-----	BLOCK

Military Inset Out Area

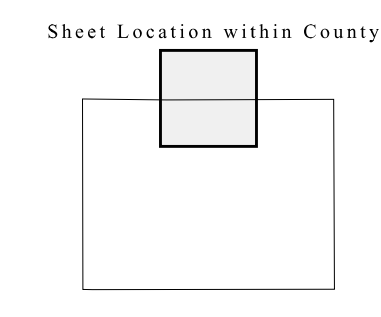
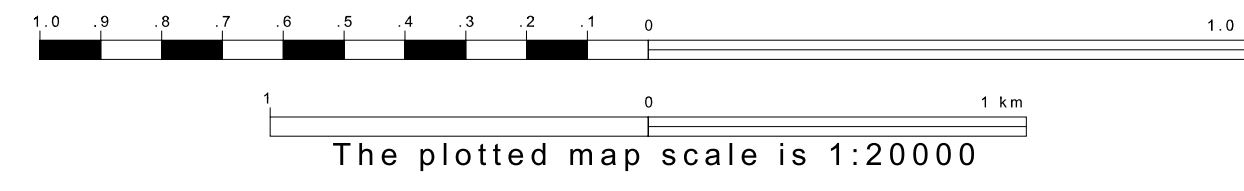
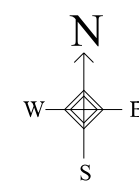
Abbreviation Reference: AIR = American Indian Reservation; Trust Land = Off-Reservation Trust Land

1 A * * following a place name indicates that the place is consecutive with a MCD. A * indicates that the place differs from the place name.
 2 A * * following a VTD code indicates an actual voting district. Its absence indicates that the VTD is a pseudo voting district or no information is available as to its status.
 3 A * * following a block number indicates that the block number is repeated elsewhere in the block.



41.095810N
93.415081W

41.095810N
93.239888W



Key to Adjacent Sheets

1	2	3
4	5	6

ST: Iowa (19)
 COU: Lucas (117)
 SHEET 2 OF 9 PARENT SHEETS



All legal boundaries and names are as of January 1, 2000. The boundaries shown on this map are for Census Bureau statistical data collection and tabulation purposes only; their depiction and designation for statistical purposes does not constitute a determination of jurisdictional authority or rights of ownership or entitlement. U.S. DEPARTMENT OF COMMERCE Economics and Statistics Administration U.S. Census Bureau

P. L. 94-171 COUNTY BLOCK MAP (CENSUS 2000)

41 228468N
93 239888W

41 228468N
93 064716W

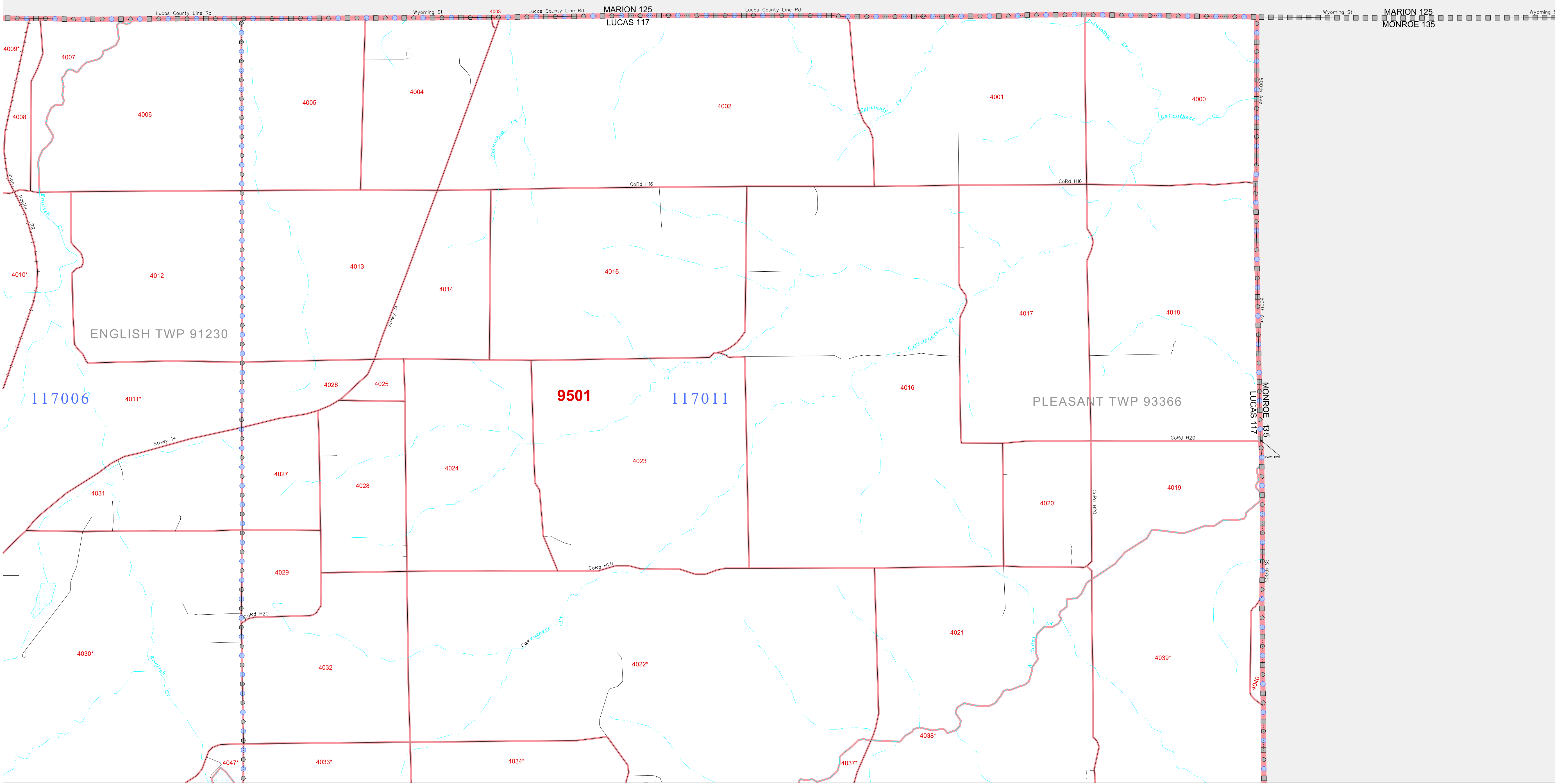
GEOGRAPHIC AREAS LEGEND

SYMBOL	NAME STYLE
*****	INTERNATIONAL
*****	AIR (FEDERAL)
*****	Trust Land
//////	STATE
	COUNTY
□□□□	MINOR CIVIL DIV.¹
□□□□	Incorporated Place¹
□□□□	Census Designated Place¹
.....	Corporate Offset Boundary
.....	Voting District²
.....	Census Tract
.....	BLOCK³

Military Inset Out Area

Abbreviation Reference: AIR = American Indian Reservation; Trust Land = Off-Reservation Trust Land

1 A " " following a place name indicates that the place is consecutive with a MCD. A " " indicates that the place differs from the place name.
 2 A " " following a VTD code indicates an actual voting district. Its absence indicates that the VTD is a pseudo voting district or no information is available as to its status.
 3 A " " following a block number indicates that the block number is repeated elsewhere in the block.



Military Inset Out Area

Abbreviation Reference: AIR = American Indian Reservation; Trust Land = Off-Reservation Trust Land

1 A " " following a place name indicates that the place is consecutive with a MCD. A " " indicates that the place differs from the place name.
 2 A " " following a VTD code indicates an actual voting district. Its absence indicates that the VTD is a pseudo voting district or no information is available as to its status.
 3 A " " following a block number indicates that the block number is repeated elsewhere in the block.

The plotted map scale is 1:20000

Sheet Location within County

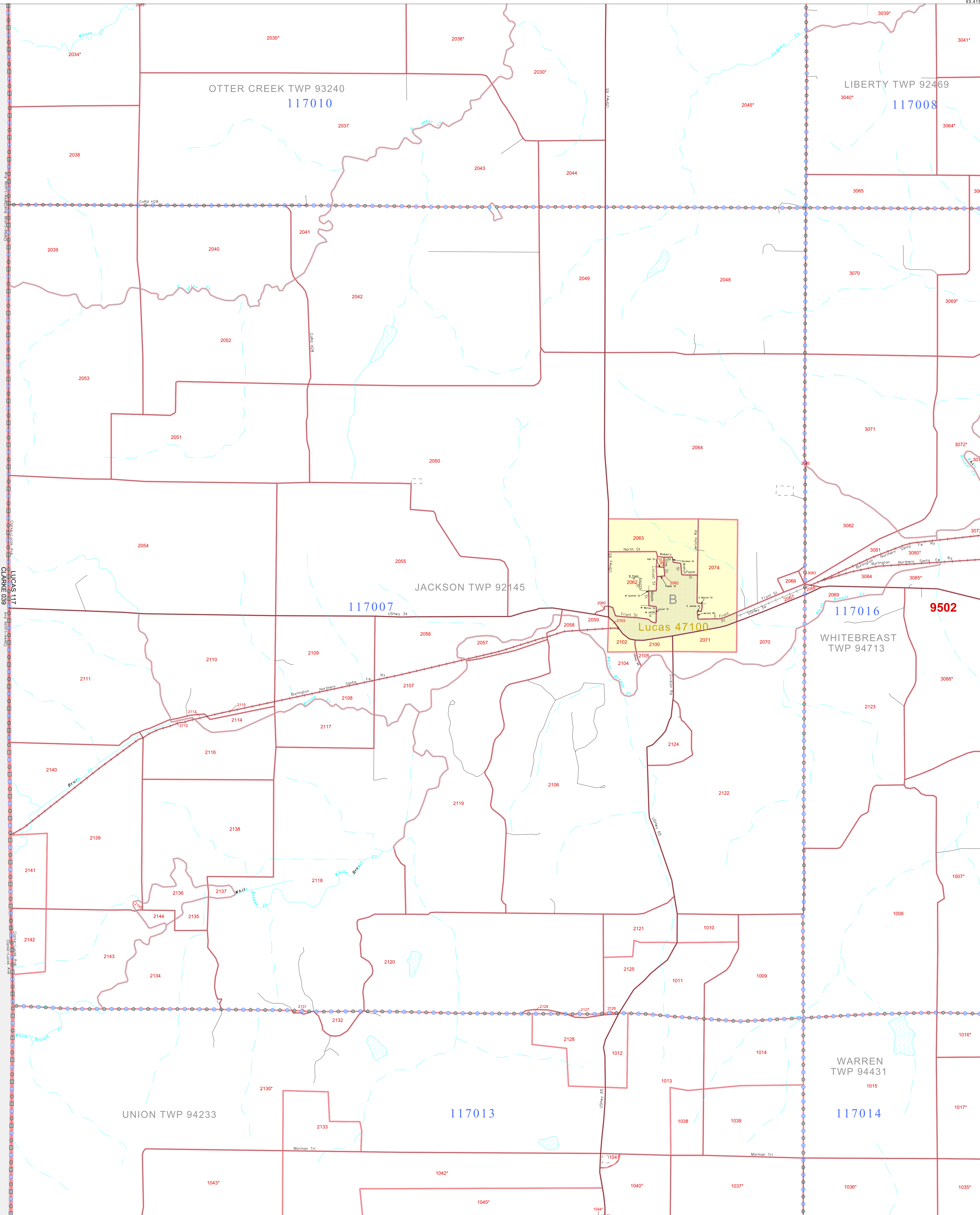
Key to Adjacent Sheets

2	3
5	6

P. L. 94-171 COUNTY BLOCK MAP (CENSUS 2000)

41 055810N
93.590234W

41 055810N
93.415061W



GEOGRAPHIC AREAS LEGEND

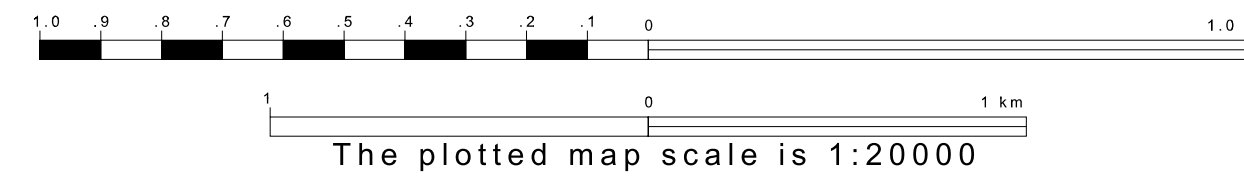
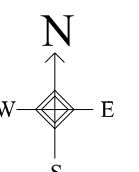
SYMBOL	NAME STYLE
*****	INTERNATIONAL
*****	AIR (FEDERAL)
*****	Trust Land
//////	STATE
	COUNTY
-----	MINOR CIVIL DIV.
-----	Incorporated Place¹
-----	Census Designated Place¹
-----	Corporate Offset Boundary
.....	Voting District²
-----	Census Tract
-----	BLOCK³

Military Inset Out Area
 Abbreviation Reference: AIR = American Indian Reservation; Trust Land = Off-Reservation Trust Land

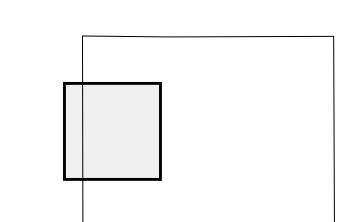
1 A " " following a place name indicates that the place is coterminous with a MCD. A " " indicates that the place is also a false MCD. In both cases, the MCD name is shown only when it differs from the place name.
 2 A " " following a VTD code indicates an actual voting district. Its absence indicates that the VTD is a pseudo voting district or no information is available as to its status.
 3 A " " following a block number indicates that the block number is repeated elsewhere in the block.

40 943152N
93.590234W

40 943152N
93.415061W



Sheet Location within County



Key to Adjacent Sheets

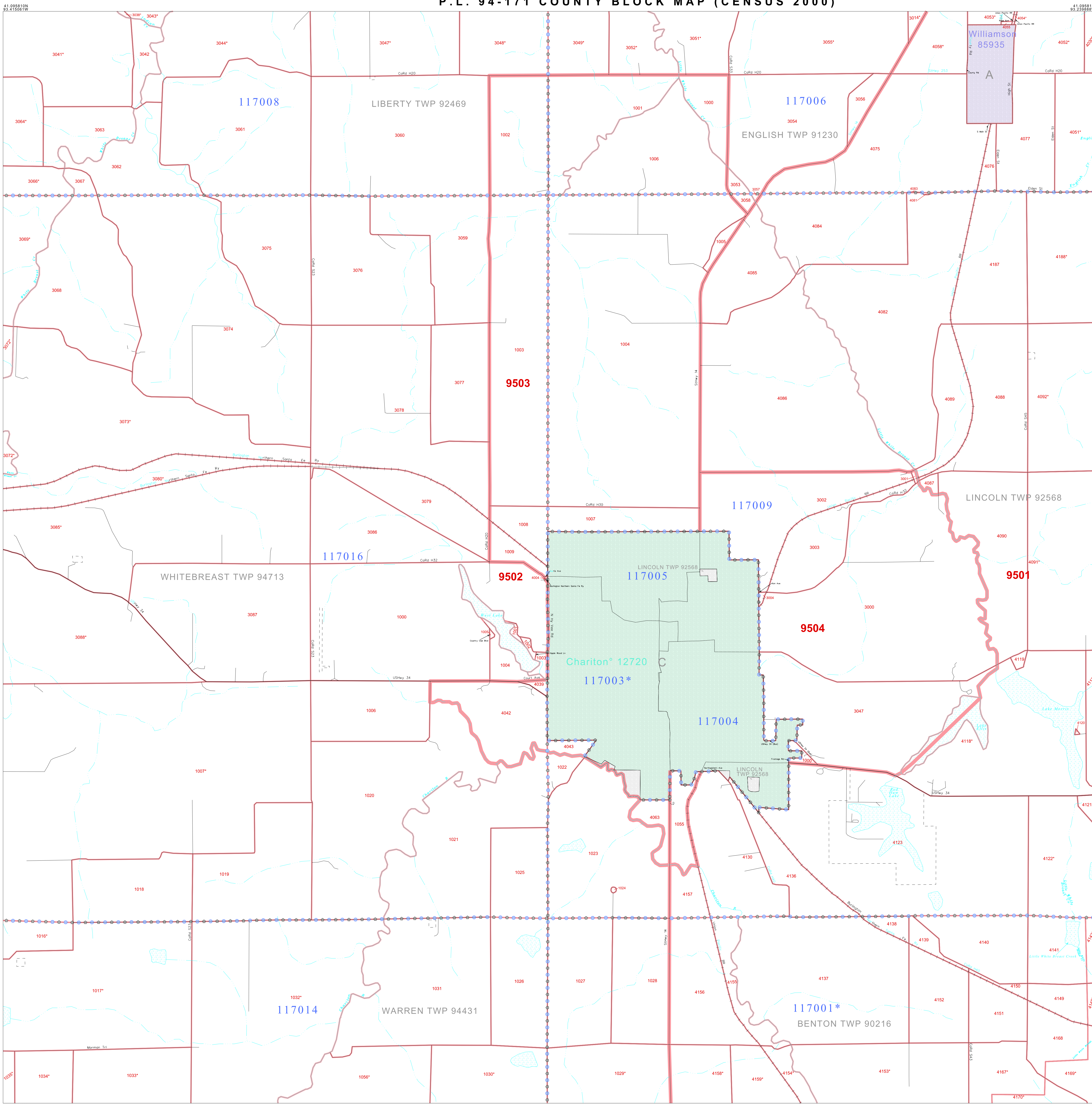
1	2
4	5
7	8

ST: Iowa (19)
 COU: Lucas (117)
 SHEET 4 OF 9 PARENT SHEETS



All legal boundaries and names are as of January 1, 2000. The boundaries shown on this map are for Census Bureau statistical data collection and tabulation purposes only; their depiction and designation for statistical purposes does not constitute a determination of jurisdictional authority or rights of ownership or entitlement. U.S. DEPARTMENT OF COMMERCE Economics and Statistics Administration U.S. Census Bureau

P.L. 94-171 COUNTY BLOCK MAP (CENSUS 2000)



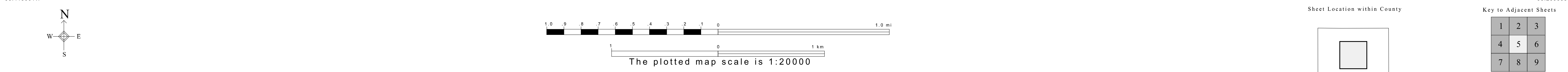
GEOGRAPHIC AREAS LEGEND

SYMBOL	NAME STYLE
*****	INTERNATIONAL
*****	AIR (FEDERAL)
*****	Trust Land
*****	STATE
*****	COUNTY
*****	MINOR CIVIL DIV.
*****	Incorporated Place ¹
*****	Census Designated Place ²
*****	Corporate Offset Boundary
*****	Voting District ³
*****	Census Tract
*****	BLOCK ³

Military Inset Out Area

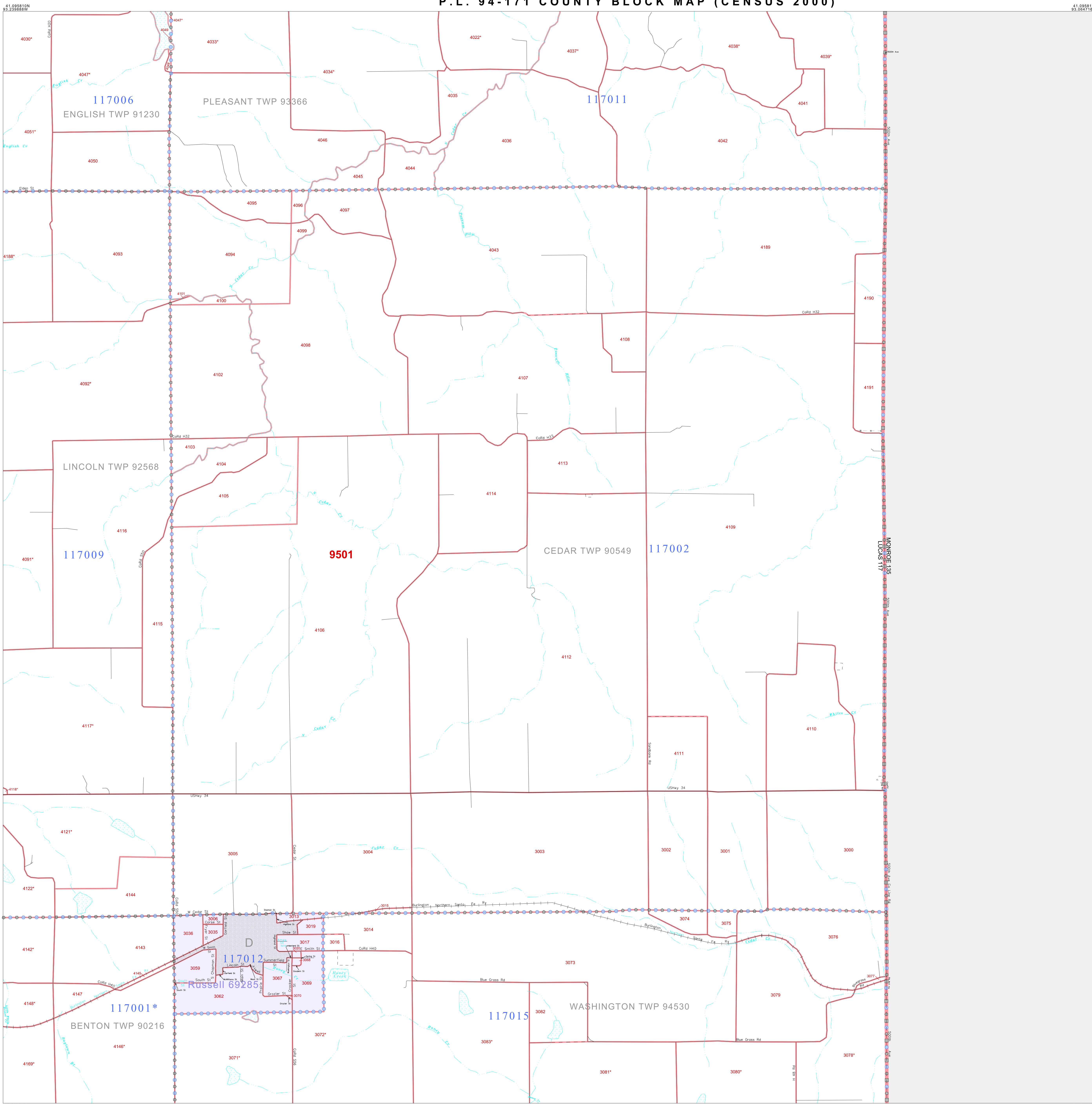
Abbreviation Reference: AIR = American Indian Reservation; Trust Land = Off-Reservation Trust Land

1 A * * following a place name indicates that the place is coextensive with a MCD. A * * indicates that the place is also a place MCD. In both cases, the MCD name is shown only when it differs from the place name.
 2 A * * following a CTD code indicates an actual voting district. Its absence indicates that the VTD is a pseudo voting district or no information is available as to its status.
 3 A * * following a block number indicates that the block number is repeated elsewhere in the block.



All legal boundaries and names are as of January 1, 2000. The boundaries shown on this map are for Census Bureau statistical data collection and tabulation purposes only; their depiction and designation for statistical purposes does not constitute a determination of jurisdictional authority or rights of ownership or entitlement. U.S. DEPARTMENT OF COMMERCE Economics and Statistics Administration U.S. Census Bureau

P.L. 94-171 COUNTY BLOCK MAP (CENSUS 2000)



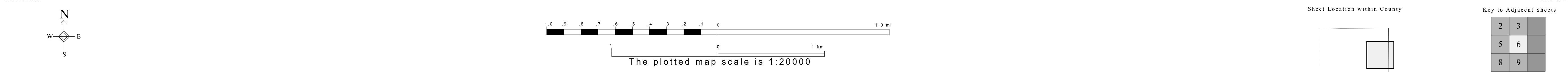
GEOGRAPHIC AREAS LEGEND

SYMBOL	NAME STYLE
*****	INTERNATIONAL
*****	AIR (FEDERAL)
*****	Trust Land
*****	STATE
*****	COUNTY
*****	MINOR CIVIL DIV.
*****	Incorporated Place ¹
*****	Census Designated Place ¹
*****	Corporate Offset Boundary
*****	Voting District ²
*****	Census Tract
*****	BLOCK ³

Military Inset Out Area

Abbreviation Reference: AIR = American Indian Reservation; Trust Land = Off-Reservation Trust Land

1 A "*" following a place name indicates that the place is consecutive with a MCD. A "-" indicates that the place differs from the MCD. In both cases, the MCD name is shown only when it differs from the place name.
 2 A "*" following a VTD code indicates an actual voting district. Its absence indicates that the VTD is a pseudo voting district or no information is available as to its status.
 3 A "*" following a block number indicates that the block number is repeated elsewhere in the block.

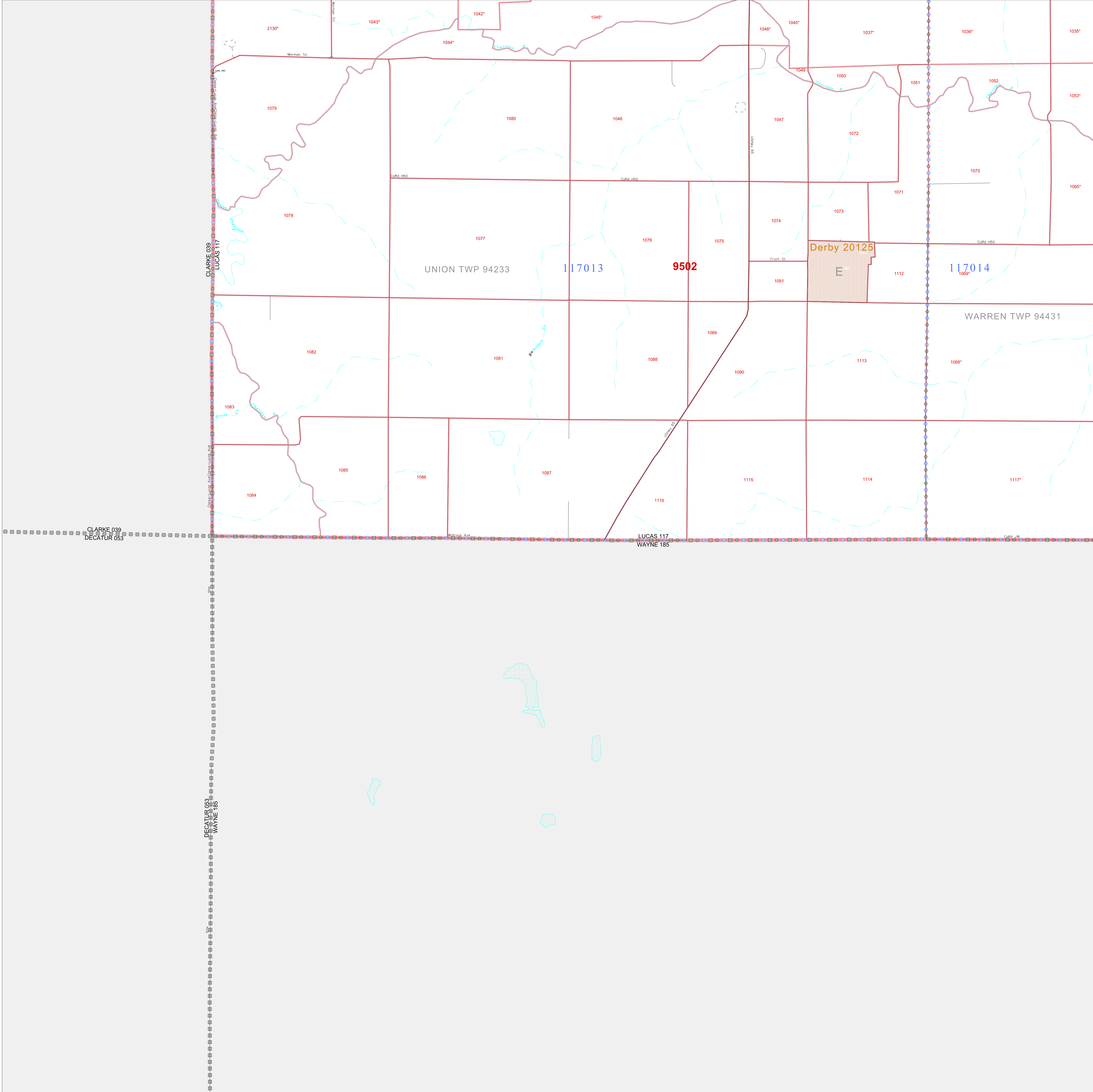


All legal boundaries and names are as of January 1, 2000. The boundaries shown on this map are for Census Bureau statistical data collection and tabulation purposes only; their depiction and designation for statistical purposes does not constitute a determination of jurisdictional authority or rights of ownership or entitlement. U.S. DEPARTMENT OF COMMERCE Economics and Statistics Administration U.S. Census Bureau

P. L. 94-171 COUNTY BLOCK MAP (CENSUS 2000)

40 963152N
93 890234W

40 963152N
93 415061W



GEOGRAPHIC AREAS LEGEND

SYMBOL	NAME STYLE
*****	INTERNATIONAL
*****	AIR (FEDERAL)
*****	Trust Land
*****	Trust Land
*****	STATE
*****	COUNTY
*****	MINOR CIVIL DIV.
*****	Incorporated Place ¹
*****	Census Designated Place ¹
*****	Corporate Offset Boundary
*****	Voting District ²
*****	Census Tract
*****	BLOCK ³

Military Inset Out Area

Abbreviation Reference: AIR = American Indian Reservation; Trust Land = Off-Reservation Trust Land

1 A "*" following a place name indicates that the place is coterminous with a MCD. A "-" indicates that the place is also a false MCD. In both cases, the MCD name is shown only when it differs from the place name.
 2 A "*" following a VTD code indicates an actual voting district. Its absence indicates that the VTD is a pseudo voting district or no information is available as to its status.
 3 A "*" following a block number indicates that the block number is repeated elsewhere in the block.

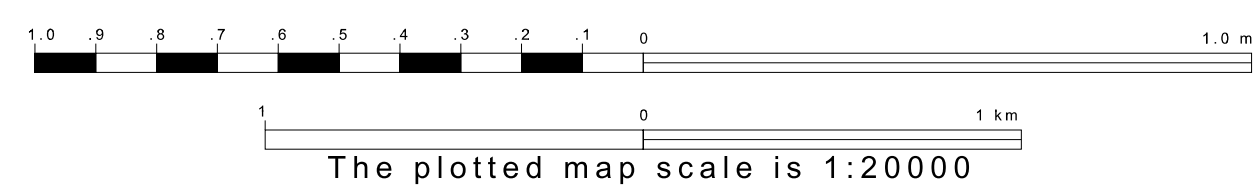
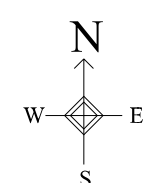
CLARKE 039
LUCAS 117
DECATUR 053

DECATUR 053
WAYNE 185

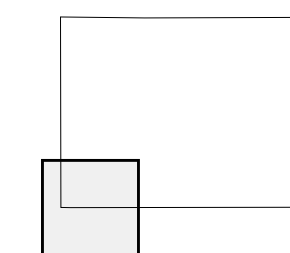
LUCAS 117
WAYNE 185

40 830495N
93 590234W

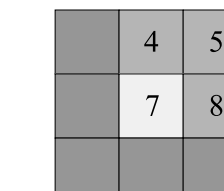
40 830495N
93 415061W



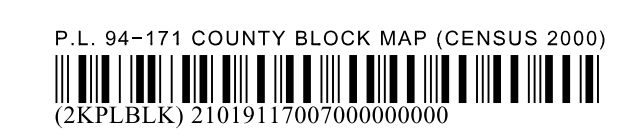
Sheet Location within County



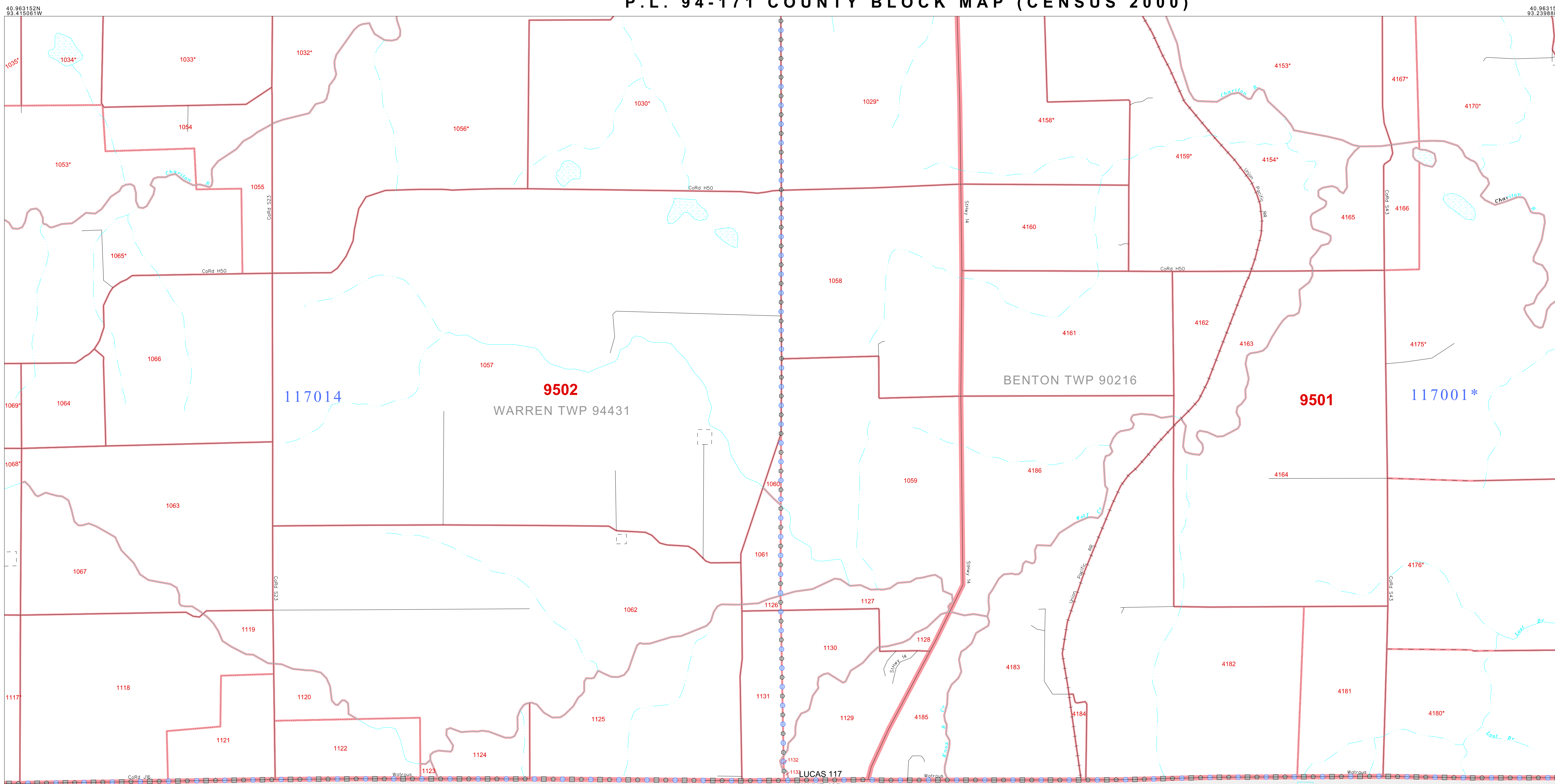
Key to Adjacent Sheets



ST: Iowa (19)
COU: Lucas (117)
SHEET 7 OF 9 PARENT SHEETS



P. L. 94-171 COUNTY BLOCK MAP (CENSUS 2000)



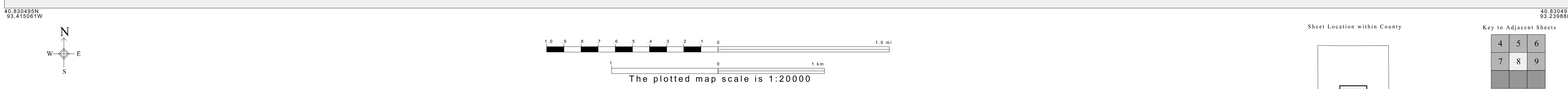
GEOGRAPHIC AREAS LEGEND

SYMBOL	NAME STYLE
*****	INTERNATIONAL
*****	AIR (FEDERAL)
*****	Trust Land
*****	STATE
*****	COUNTY
*****	MINOR CIVIL DIV.
*****	Incorporated Place¹
*****	Census Designated Place¹
*****	Corporate Offset Boundary
*****	Voting District²
*****	Census Tract
*****	BLOCK³

Military Inset Out Area

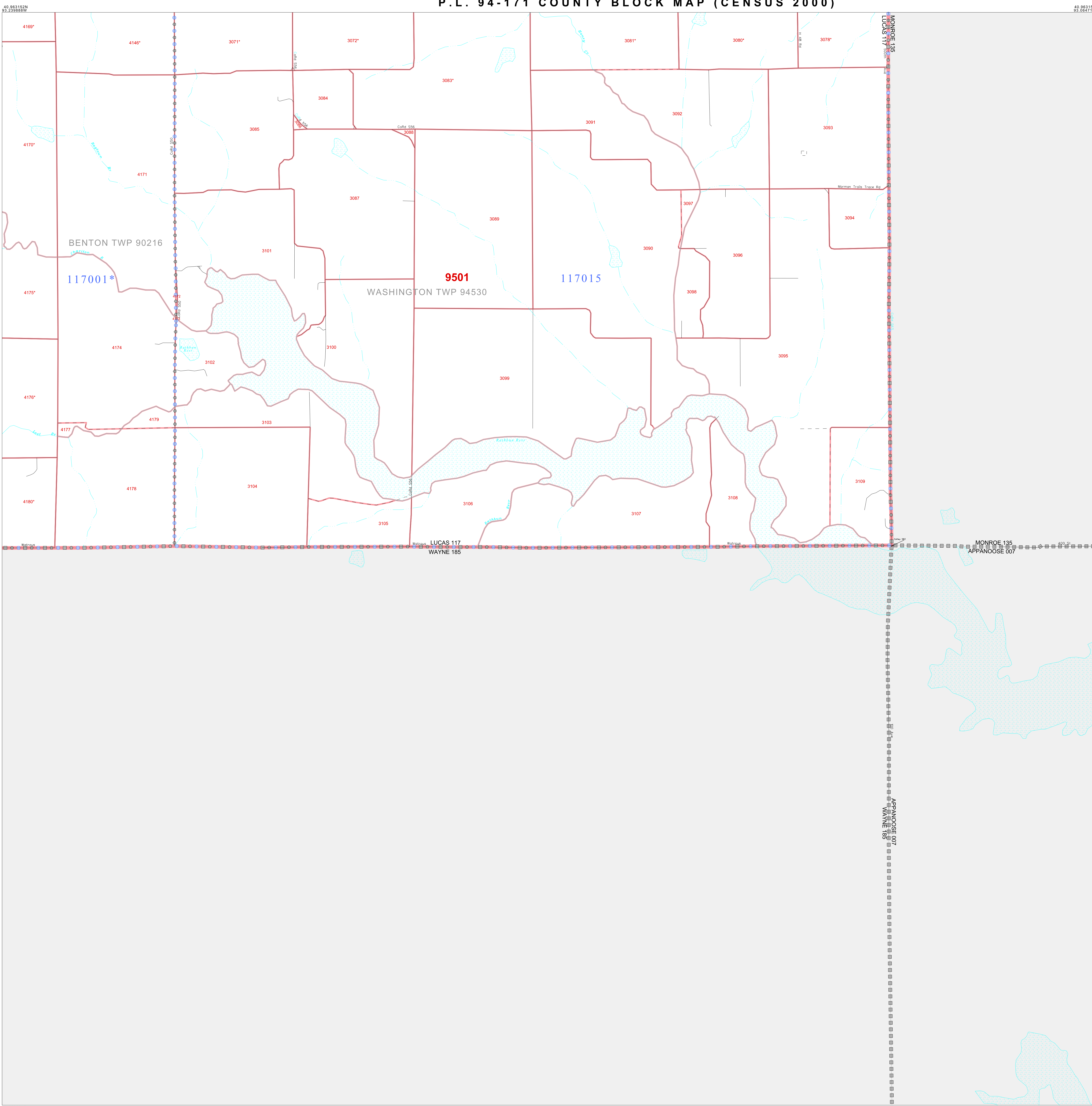
Abbreviation Reference: AIR = American Indian Reservation; Trust Land = Off-Reservation Trust Land

1 A "*" following a place name indicates that the place is coterminous with a MCD. A "-" indicates that the place differs from the place name.
 2 A "*" following a VTD code indicates an actual voting district. Its absence indicates that the VTD is a pseudo voting district or no information is available as to its status.
 3 A "*" following a block number indicates that the block number is repeated elsewhere in the block.



All legal boundaries and names are as of January 1, 2000. The boundaries shown on this map are for Census Bureau statistical data collection and tabulation purposes only; their depiction and designation for statistical purposes does not constitute a determination of jurisdictional authority or rights of ownership or entitlement. U.S. DEPARTMENT OF COMMERCE Economics and Statistics Administration U.S. Census Bureau

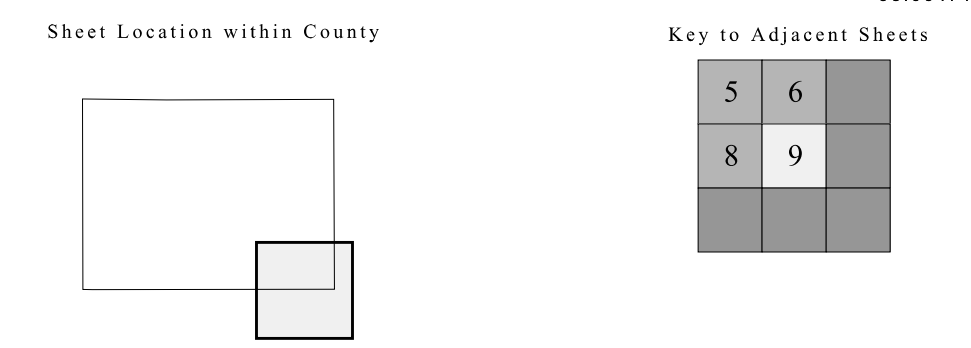
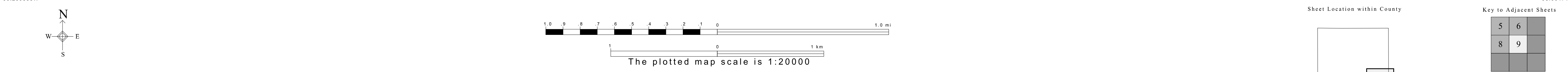
P. L. 94-171 COUNTY BLOCK MAP (CENSUS 2000)



GEOGRAPHIC AREAS LEGEND

SYMBOL	NAME STYLE
*****	INTERNATIONAL
*****	AIR (FEDERAL)
*****	Trust Land
*****	STATE
*****	COUNTY
*****	MINOR CIVIL DIV.
*****	Incorporated Place ¹
*****	Census Designated Place ¹
*****	Corporate Offset Boundary
*****	Voting District ²
*****	Census Tract
*****	BLOCK ³

Military Inset Out Area
 Abbreviation Reference: AIR = American Indian Reservation; Trust Land = Off-Reservation Trust Land
 1 A "*" following a place name indicates that the place is coextensive with a MCD. A "-" indicates that the place differs from the MCD. In both cases, the MCD name is shown only when it differs from the place name.
 2 A "*" following a VTD code indicates an actual voting district. Its absence indicates that the VTD is a pseudo voting district or no information is available as to its status.
 3 A "*" following a block number indicates that the block number is repeated elsewhere in the block.



ST: Iowa (19)
 COU: Lucas (117)
 SHEET 9 OF 9 PARENT SHEETS

P.L. 94-171 COUNTY BLOCK MAP (CENSUS 2000)
 (CKPLBLK)2101911700900000000

All legal boundaries and names are as of January 1, 2000. The boundaries shown on this map are for Census Bureau statistical data collection and tabulation purposes only; their depiction and designation for statistical purposes does not constitute a determination of jurisdictional authority or rights of ownership or entitlement. U.S. DEPARTMENT OF COMMERCE Economics and Statistics Administration U.S. Census Bureau

P. L. 94-171 COUNTY BLOCK MAP (CENSUS 2000)

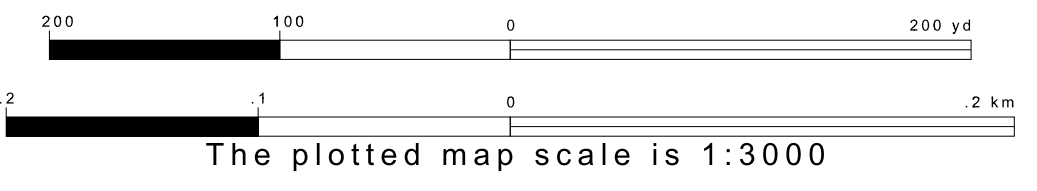
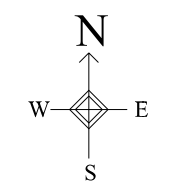
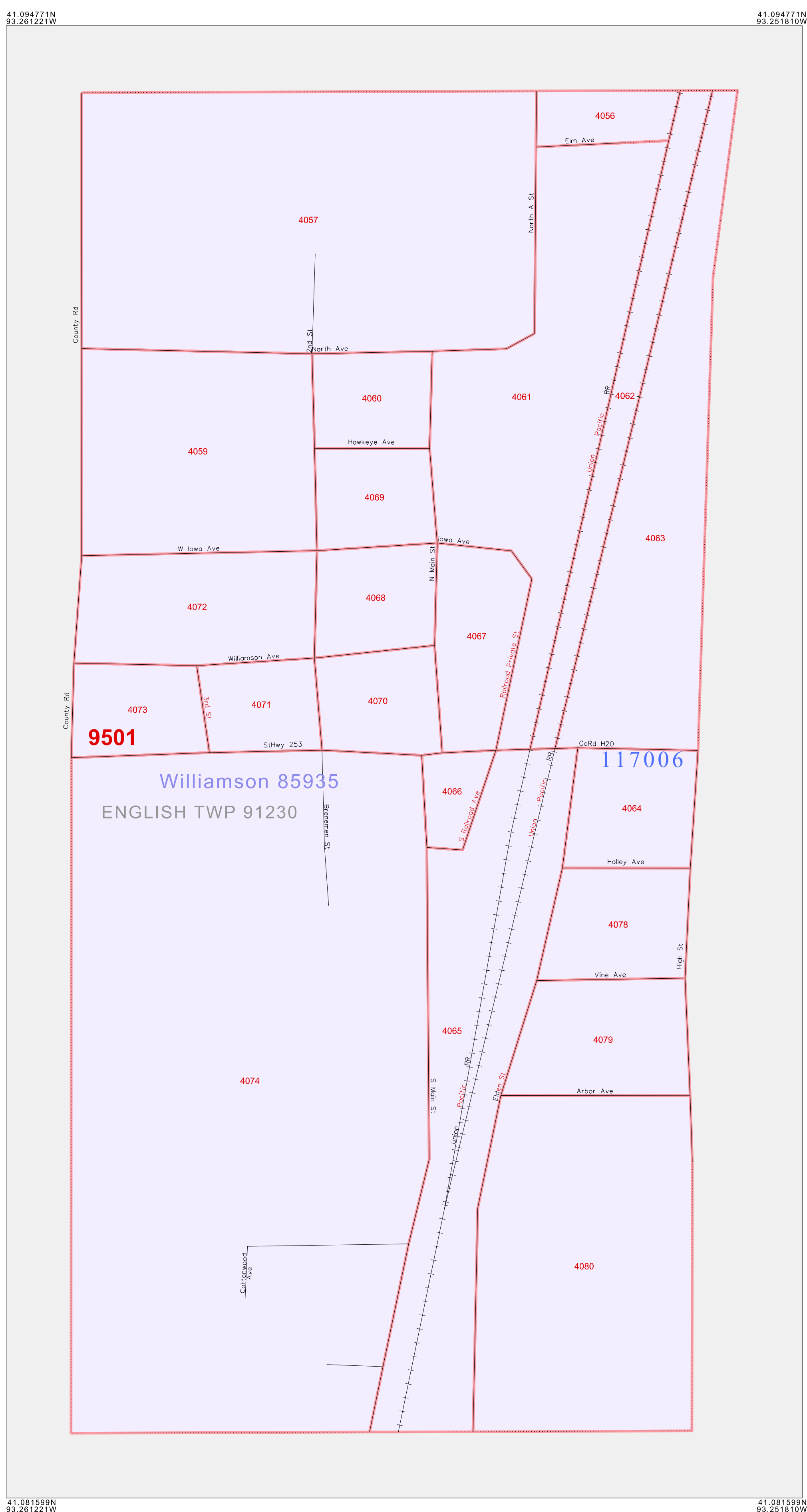
GEOGRAPHIC AREAS LEGEND

SYMBOL	NAME STYLE
*****	INTERNATIONAL
*****	AIR (FEDERAL)
*****	Trust Land
///////	STATE
	COUNTY
o-o-o-o-o	MINOR CIVIL DIV.
Yellow/Pink	Incorporated Place ¹
Yellow/Pink	Census Designated Place ¹
.....	Corporate Offset Boundary
o-o-o-o-o	Voting District ²
Red	Census Tract
Red	BLOCK ³

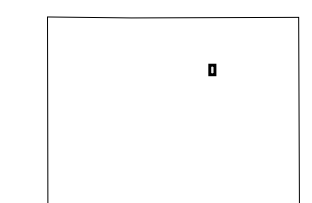
Military Inset Out Area

Abbreviation Reference: AIR = American Indian Reservation; Trust Land = Off-Reservation Trust Land

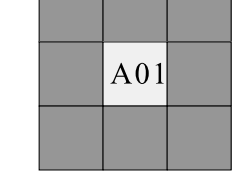
1 A "*" following a place name indicates that the place is coterminous with a MCD. A "-" indicates that the place differs from the place name.
 2 A "*" following a VTD code indicates an actual voting district. Its absence indicates that the VTD is a pseudo voting district or no information is available as to its status.
 3 A "*" following a block number indicates that the block number is repeated elsewhere in the block.



Sheet Location within County



Key to Adjacent Sheets



ST: Iowa (19)
 COU: Lucas (117)
 INSET SHEET A01

All legal boundaries and names are as of January 1, 2000.
 The boundaries shown on this map are for Census Bureau statistical data collection and tabulation purposes only; their depiction and designation for statistical purposes does not constitute a determination of jurisdictional authority or rights of ownership or entitlement.
 U.S. DEPARTMENT OF COMMERCE Economics and Statistics Administration U.S. Census Bureau



P. L. 94-171 COUNTY BLOCK MAP (CENSUS 2000)

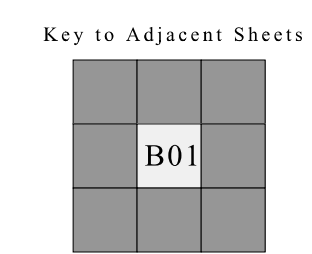
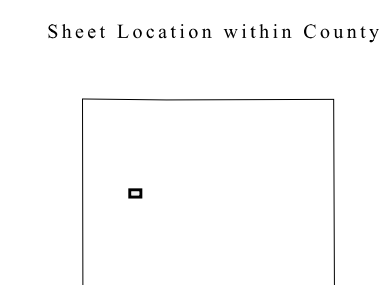
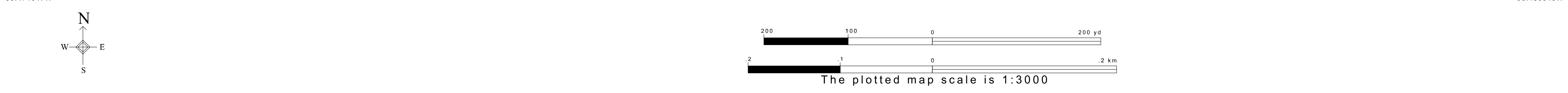
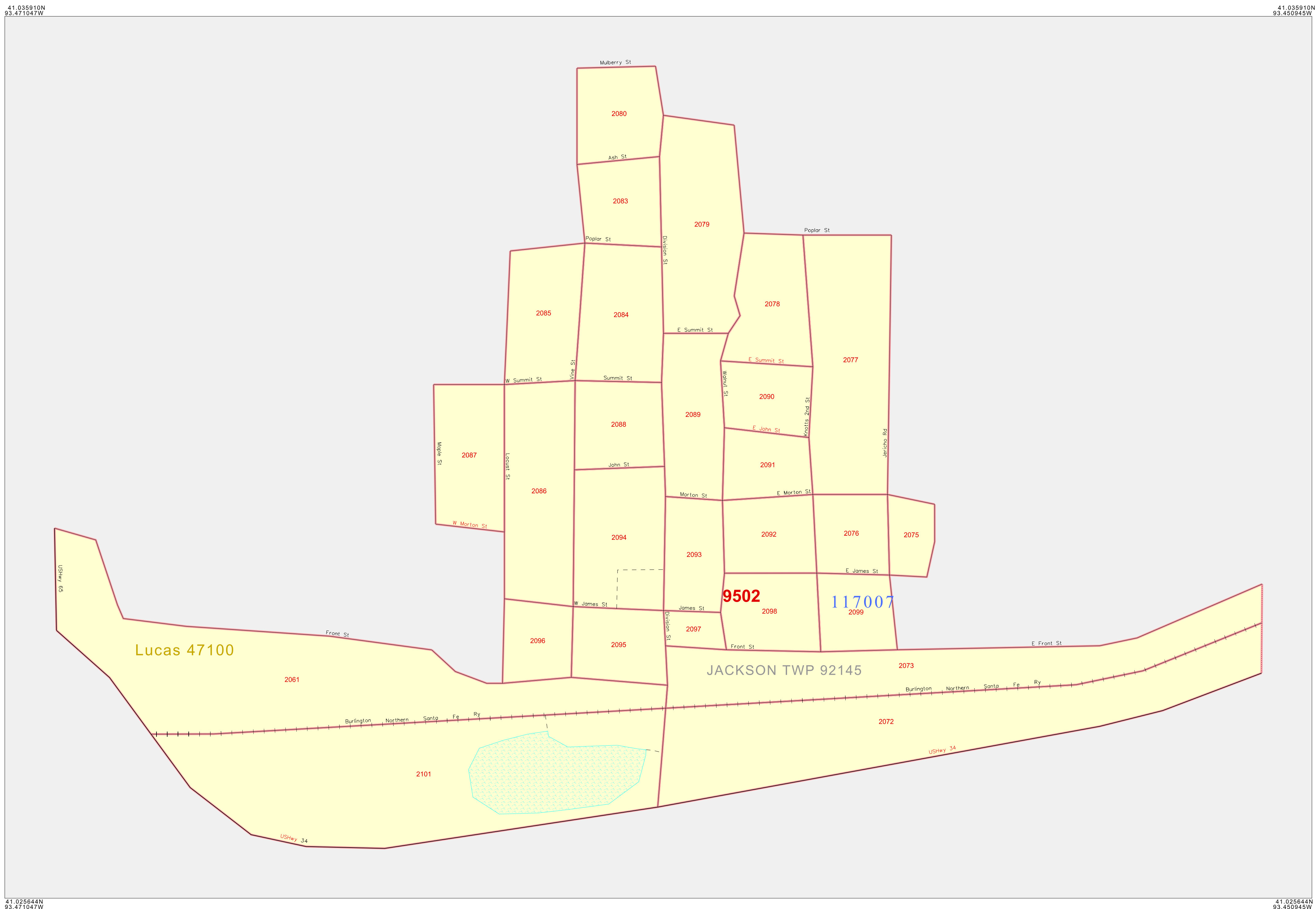
GEOGRAPHIC AREAS LEGEND

SYMBOL	NAME STYLE
*****	INTERNATIONAL
*****	AIR (FEDERAL)
*****	Trust Land
///////	STATE
	COUNTY
o-o-o-o-o	MINOR CIVIL DIV. ¹
Yellow	Incorporated Place ¹
Light Yellow	Census Designated Place ¹
.....	Corporate Offset Boundary
.....	Voting District ²
-----	Census Tract
-----	BLOCK ³

Military Inset Out Area

Abbreviation Reference: AIR = American Indian Reservation; Trust Land = Off-Reservation Trust Land

1 A "*" following a place name indicates that the place is coterminous with a MCD. A "-" indicates that the place differs from the place name.
 2 A "*" following a VTD code indicates an actual voting district. Its absence indicates that the VTD is a pseudo voting district or no information is available as to its status.
 3 A "*" following a block number indicates that the block number is repeated elsewhere in the block.



ST: Iowa (19)
 COU: Lucas (117)
 INSET SHEET B01

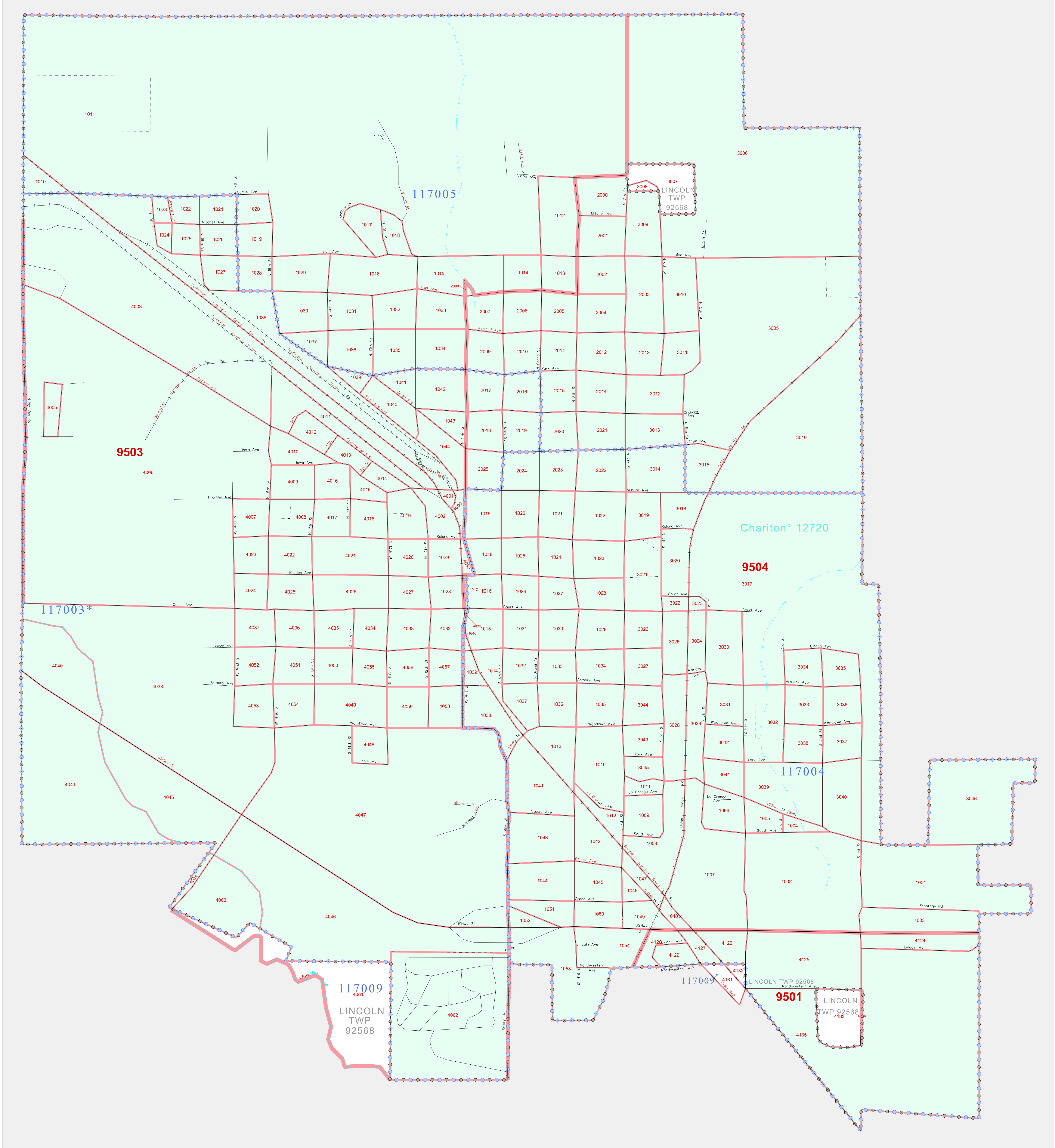


All legal boundaries and names are as of January 1, 2000. The boundaries shown on this map are for Census Bureau statistical data collection and tabulation purposes only; their depiction and designation for statistical purposes does not constitute a determination of jurisdictional authority or rights of ownership or entitlement. U.S. DEPARTMENT OF COMMERCE Economics and Statistics Administration U.S. Census Bureau

P. L. 94-171 COUNTY BLOCK MAP (CENSUS 2000)

41 033226N
93 328547W

41 033226N
93 328547W



GEOGRAPHIC AREAS LEGEND

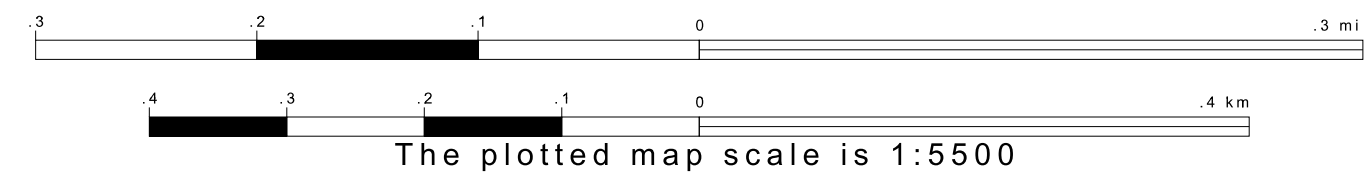
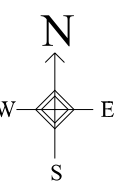
SYMBOL	NAME STYLE
*****	INTERNATIONAL
*****	AIR (FEDERAL)
*****	Trust Land
*****	STATE
*****	COUNTY
*****	MINOR CIVIL DIV. ¹
*****	Incorporated Place ¹
*****	Census Designated Place ¹
*****	Corporate Offset Boundary
*****	Voting District ²
*****	Census Tract
*****	BLOCK ³

Military Inset Out Area
 Abbreviation Reference: AIR = American Indian Reservation; Trust Land = Off-Reservation Trust Land

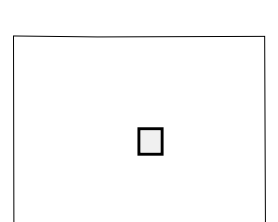
1 A "*" following a place name indicates that the place is coterminous with a MCD. A "-" indicates that the place is other than a MCD. In both cases, the MCD name is shown only when it differs from the place name.
 2 A "*" following a VTD code indicates an actual voting district. Its absence indicates that the VTD is a pseudo voting district or no information is available as to its status.
 3 A "*" following a block number indicates that the block number is repeated elsewhere in the block.

40 997847N
93 328547W

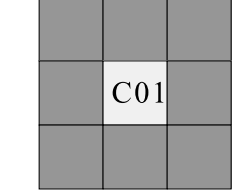
40 997847N
93 328547W



Sheet Location within County



Key to Adjacent Sheets



ST: Iowa (19)
COU: Lucas (117)
INSET SHEET C01



All legal boundaries and names are as of January 1, 2000. The boundaries shown on this map are for Census Bureau statistical data collection and tabulation purposes only; their depiction and designation for statistical purposes does not constitute a determination of jurisdictional authority or rights of ownership or entitlement. U.S. DEPARTMENT OF COMMERCE Economics and Statistics Administration U.S. Census Bureau

P. L. 94-171 COUNTY BLOCK MAP (CENSUS 2000)

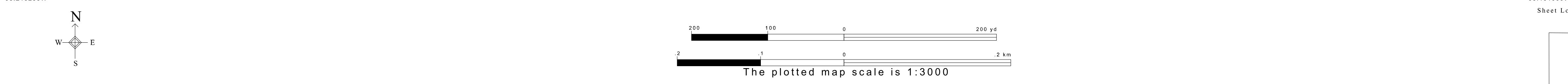
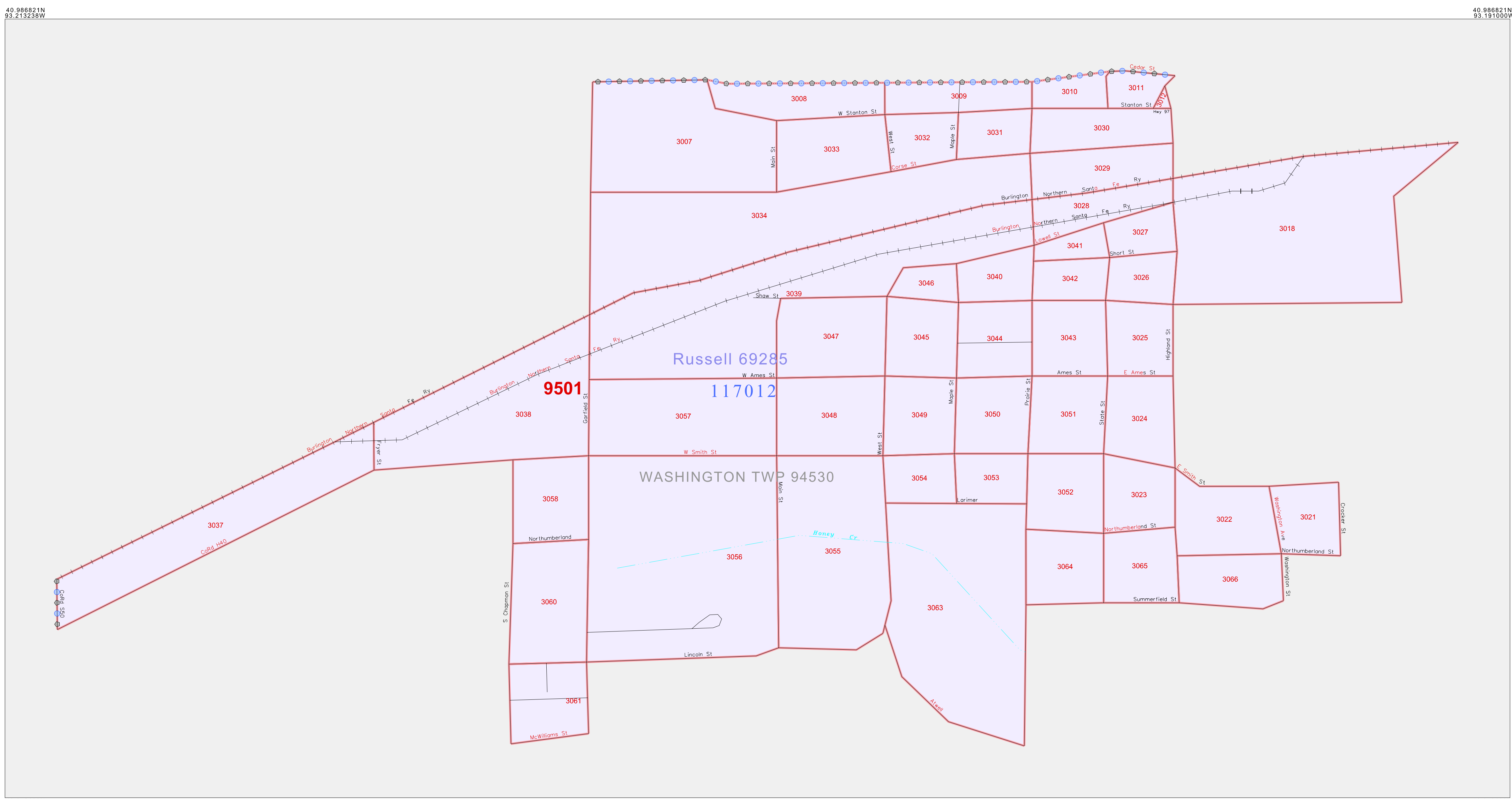
GEOGRAPHIC AREAS LEGEND

SYMBOL	NAME STYLE
*****	INTERNATIONAL
*****	AIR (FEDERAL)
*****	Trust Land
//////	STATE
	COUNTY
○○○○○	MINOR CIVIL DIV ¹
■■■■■	Incorporated Place ¹
■■■■■	Census Designated Place ¹
.....	Corporate Offset Boundary
●●●●●	Voting District ²
■■■■■	Census Tract
■■■■■	BLOCK ³

Military Inset Out Area

Abbreviation Reference: AIR = American Indian Reservation; Trust Land = Gift/Reservation Trust Land

1 A "*" following a place name indicates that the place is coterminous with a MCD. A "-" indicates that the place differs from the MCD. In both cases, the MCD name is shown only when it differs from the place name.
 2 A "*" following a VTD code indicates an actual voting district. Its absence indicates that the VTD is a pseudo voting district or no information is available as to its status.
 3 A "*" following a block number indicates that the block number is repeated elsewhere in the block.



Sheet Location within County

Key to Adjacent Sheets

ST: Iowa (19)
 COU: Lucas (117)
 INSET SHEET D01



All legal boundaries and names are as of January 1, 2000. The boundaries shown on this map are for Census Bureau statistical data collection and tabulation purposes only; their depiction and designation for statistical purposes does not constitute a determination of jurisdictional authority or rights of ownership or entitlement. U.S. DEPARTMENT OF COMMERCE Economics and Statistics Administration U.S. Census Bureau

P. L. 94-171 COUNTY BLOCK MAP (CENSUS 2000)

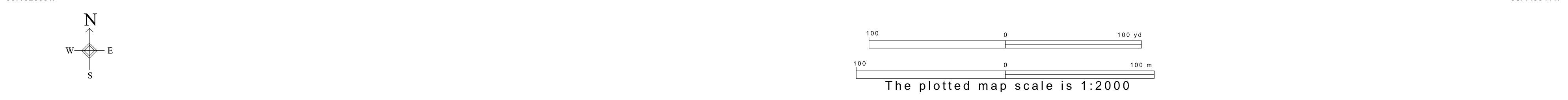
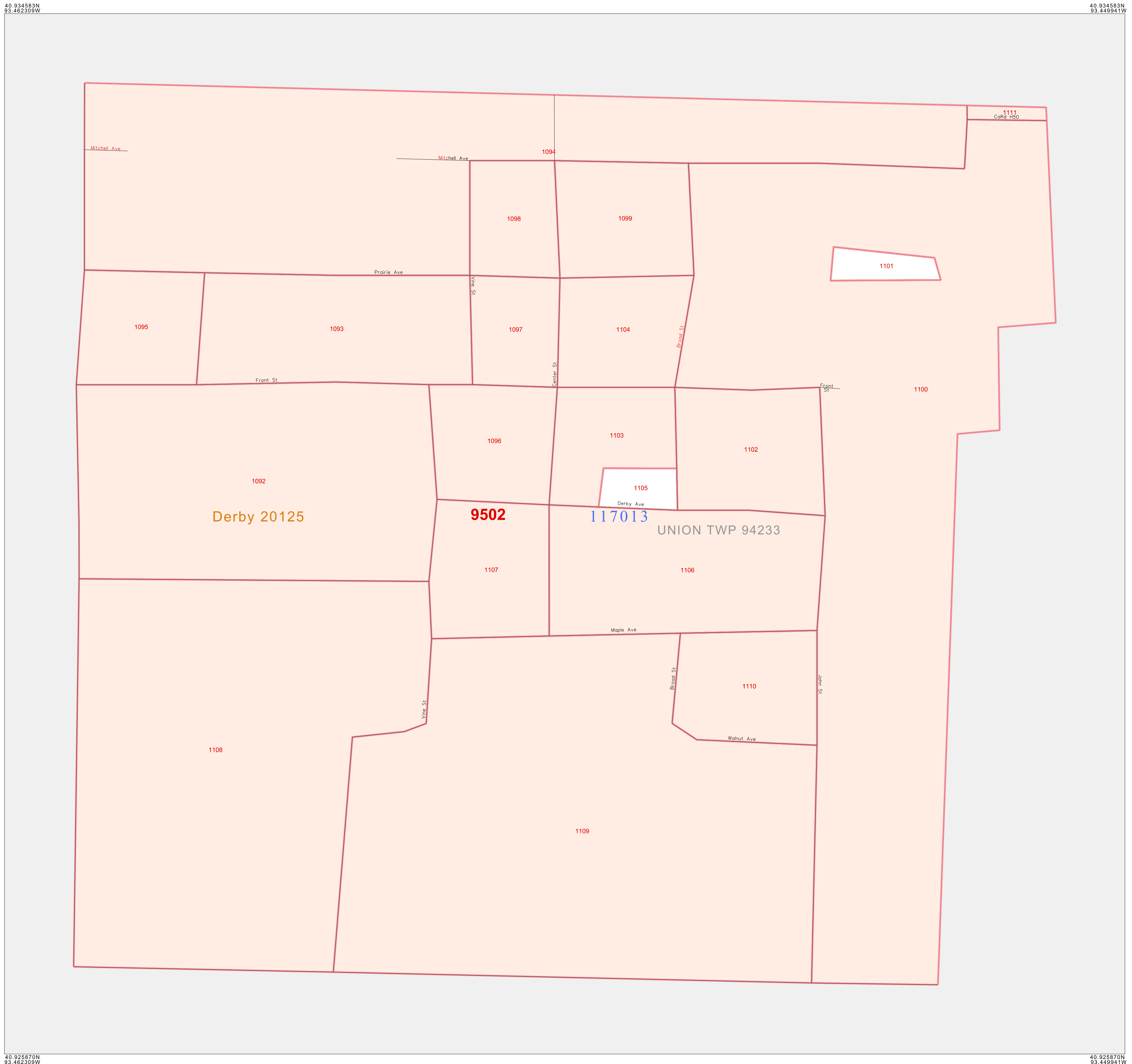
GEOGRAPHIC AREAS LEGEND

SYMBOL	NAME STYLE
*****	INTERNATIONAL
*****	AIR (FEDERAL)
*****	Trust Land
//////	STATE
	COUNTY
o-o-o-o	MINOR CIVIL DIV ¹
Yellow	Incorporated Place ¹
Light Yellow	Census Designated Place ¹
.....	Corporate Offset Boundary
.....	Voting District ²
Red	Census Tract
Red	BLOCK ³

Military Inset Out Area

Abbreviation Reference: AIR = American Indian Reservation; Trust Land = Off-Reservation Trust Land

1 A "*" following a place name indicates that the place is coterminous with a MCD. A "-" indicates that the place differs from the MCD. In both cases, the MCD name is shown only when it differs from the place name.
 2 A "*" following a VTD code indicates an actual voting district. Its absence indicates that the VTD is a pseudo voting district or no information is available as to its status.
 3 A "*" following a block number indicates that the block number is repeated elsewhere in the block.



All legal boundaries and names are as of January 1, 2000. The boundaries shown on this map are for Census Bureau statistical data collection and tabulation purposes only; their depiction and designation for statistical purposes does not constitute a determination of jurisdictional authority or rights of ownership or entitlement. U.S. DEPARTMENT OF COMMERCE Economics and Statistics Administration U.S. Census Bureau

ST: Iowa (19)
 COU: Lucas (117)
 INSET SHEET E01

P.L. 94-171 COUNTY BLOCK MAP (CENSUS 2000)
 (CKPLBLK)210191170010000000